

Electronic supplementary materials

For <https://doi.org/10.1631/jzus.A2500379>

Two-photon polymerization based microfluidic biochip incorporating a herringbone microchannel and deterministic lateral displacement design for efficient capture of circulating tumor cells

Xinyi LIANG^{1,2}, Changwei QIN^{1,2}, Kaiqiang LI³, An REN^{1,2}, Jiarui HU^{1,2}, Weikang LV^{1,2}, Lunan KE^{1,2}, Zhen WANG³, Mengfei YU⁴, Xiuxiu JIANG⁵, Huayong YANG^{1,2}, Xiaobin XU⁶, Liang MA^{1,2}

¹State Key Laboratory of Fluid Power and Mechatronic Systems, Zhejiang University, Hangzhou 310058, China

²School of Mechanical Engineering, Zhejiang University, Hangzhou 310058, China

³Center for Laboratory Medicine, Allergy center, Department of Transfusion Medicine, Zhejiang Provincial People's Hospital, Affiliated People's Hospital, Hangzhou Medical College, Hangzhou 310014, China

⁴The Affiliated Stomatologic Hospital, School of Medicine, Zhejiang University, Hangzhou 310003, China

⁵Zhejiang Provincial Clinical Research Center for Gynecology, Zhejiang Key Laboratory of Maternal and Infant Health, Department of Family Planning, Women's Hospital, Zhejiang University School of Medicine, Hangzhou 310006, China

⁶School of Materials Science of Engineering, Tongji University, Shanghai 201804, China

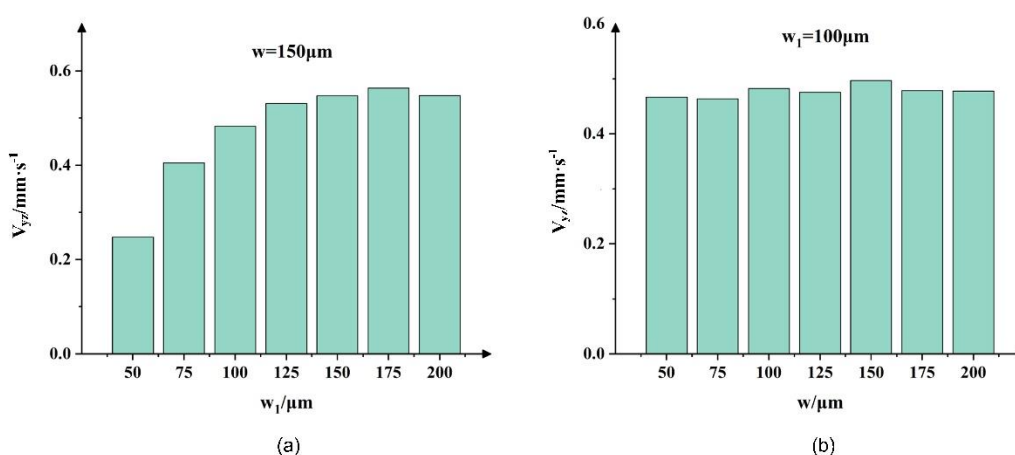


Fig. S1 (a) The relationship between v_{yz} and herringbone width when the minimum element width is $150\mu\text{m}$; (b) The relationship between v_{yz} and minimum cell width when herringbone width is $100\mu\text{m}$

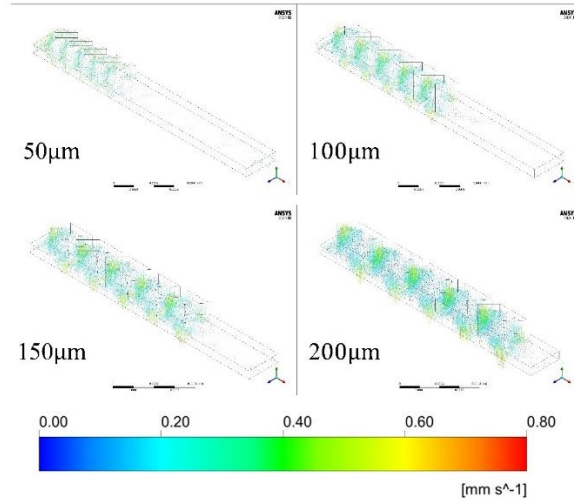


Fig. S2 When the minimum element width is 200 μm , the corresponding v_{yz} vector diagrams for different herringbone widths

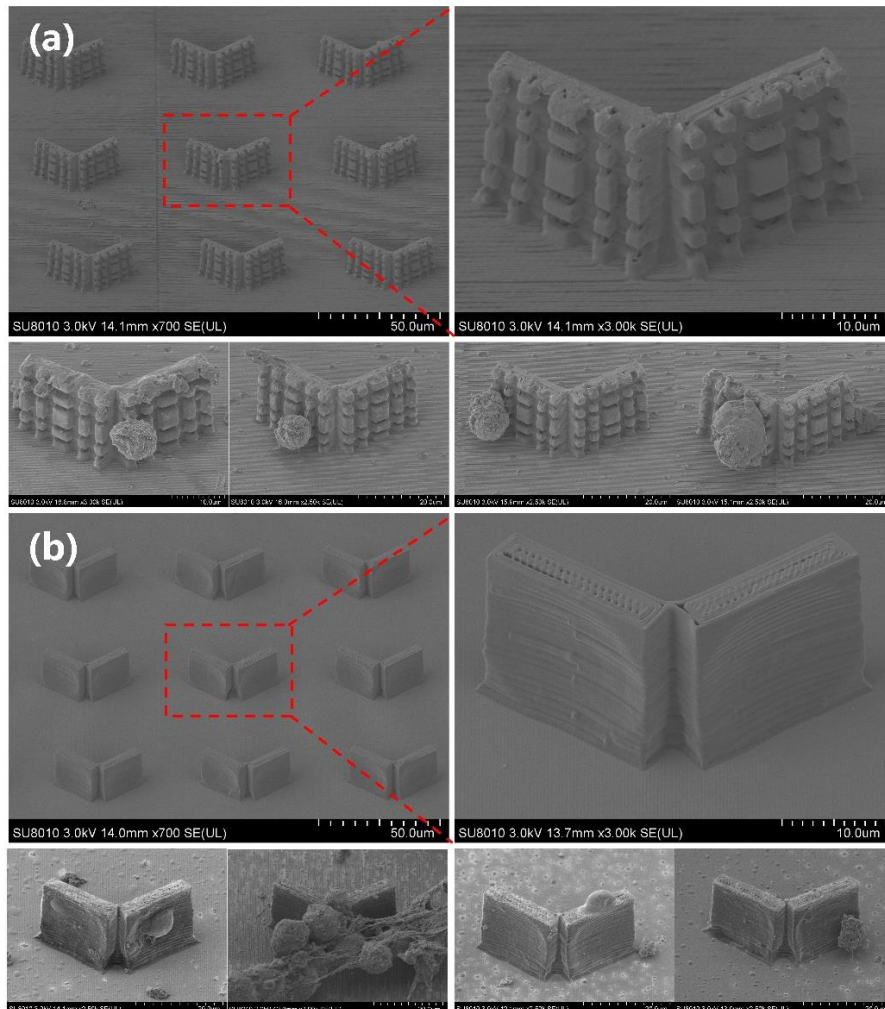


Fig. S3 Capture of different bottom microstructures. (a) Scanning electron microscope image and capture effect image of square column with 4 \times 4 slots; (b) Scanning electron microscope image and capture effect of square column spherical hole