

Colored ranges

- Group 1
- Group 2
- Group 3
- Group 4
- Group 5
- Group 6

bootstrap

- 0
- 0.24
- 0.47
- 0.71
- 0.94

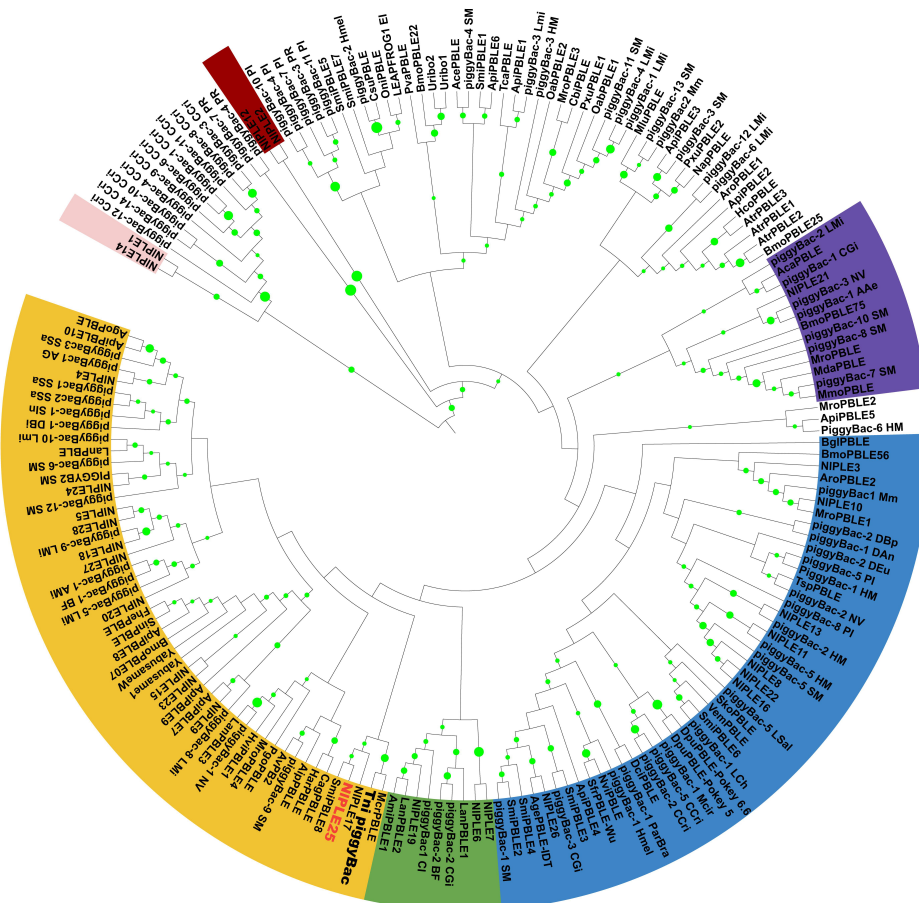


Fig. S2 Phylogenetic tree of 185 *piggyBac*-like elements.

This tree is based on amino acid sequences covering about 300 residues. Tree was constructed according to a maximum-likelihood method using MEGA 6. Bootstrapping values from 100 replications are shown in green circle. Colored frames represent six well supported clades.