

Supplemental Fig. 1

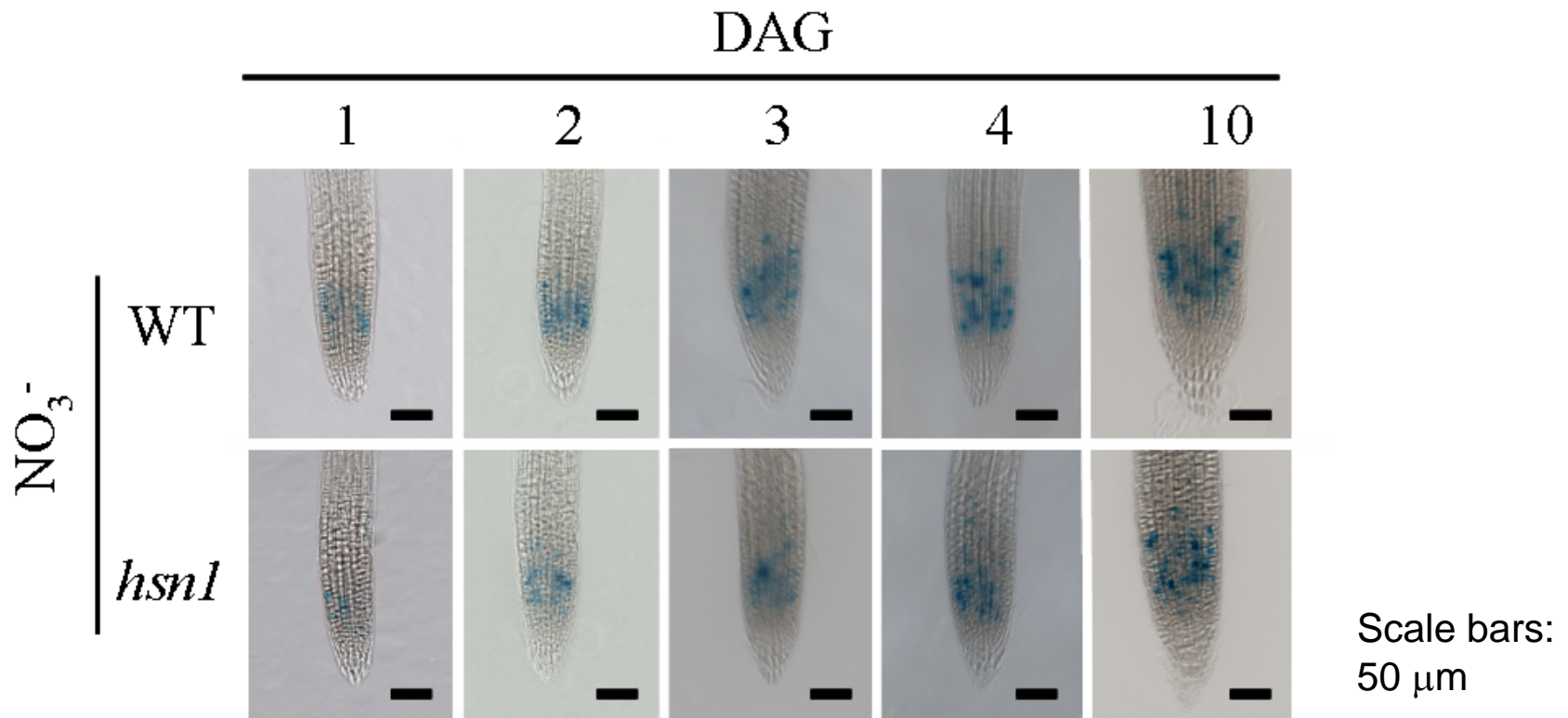


Fig. S1 *CYCB1;1::GUS* marker expression in primary roots of WT and *hsn1* mutant plants in NO₃⁻ medium in a time course up to 10 d. These results have been repeated in three separate experiments

Supplemental Fig. 2

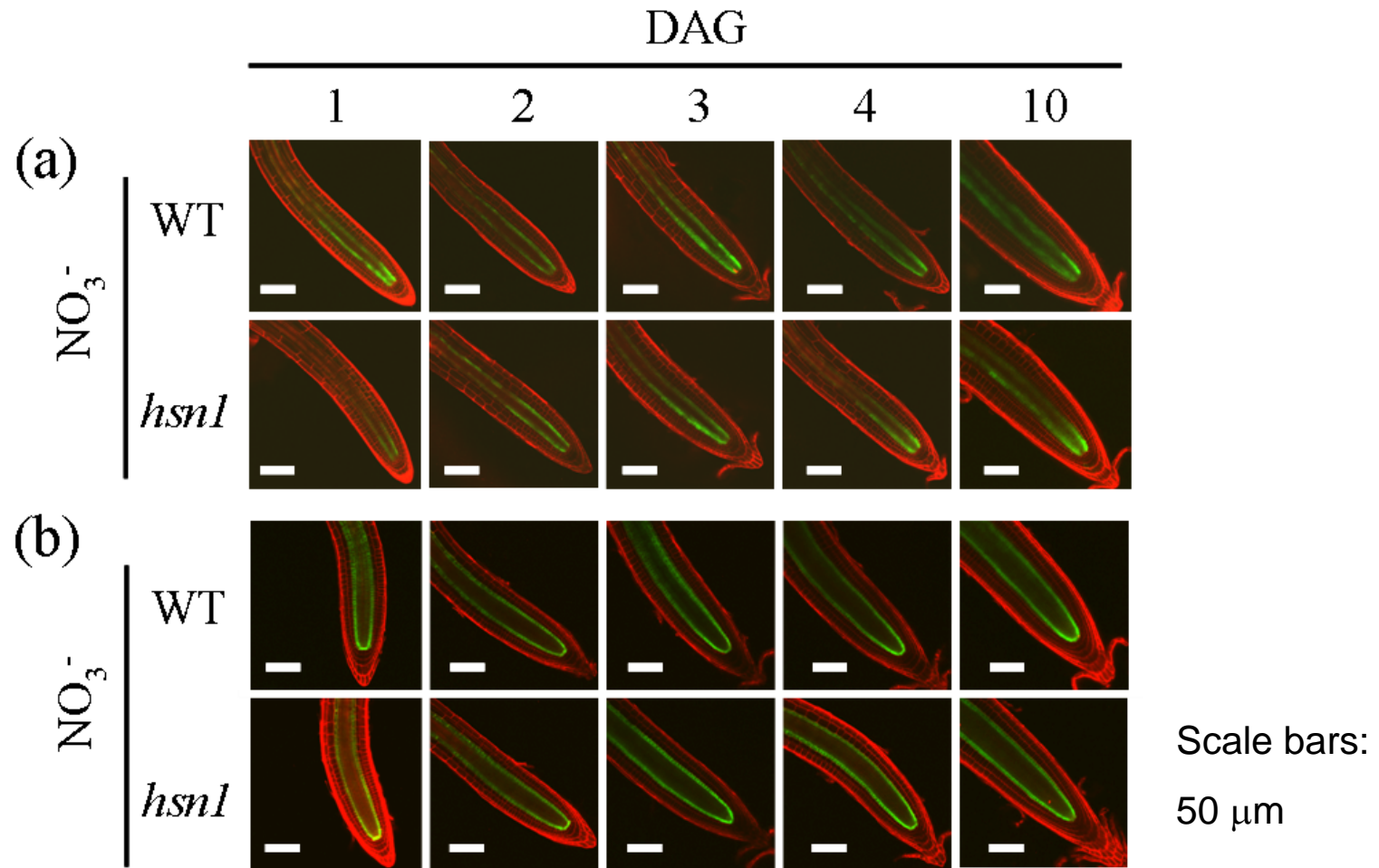


Fig. S2 GFP expression in primary roots of WT and *hsn1* mutant plants in NO_3^- medium in a time course up to 10 d carrying the enhancer traps *J3612::GFP* (a) and *SCRp::GFP* (b). These results have been repeated in three separate experiments

Supplemental Fig. 3

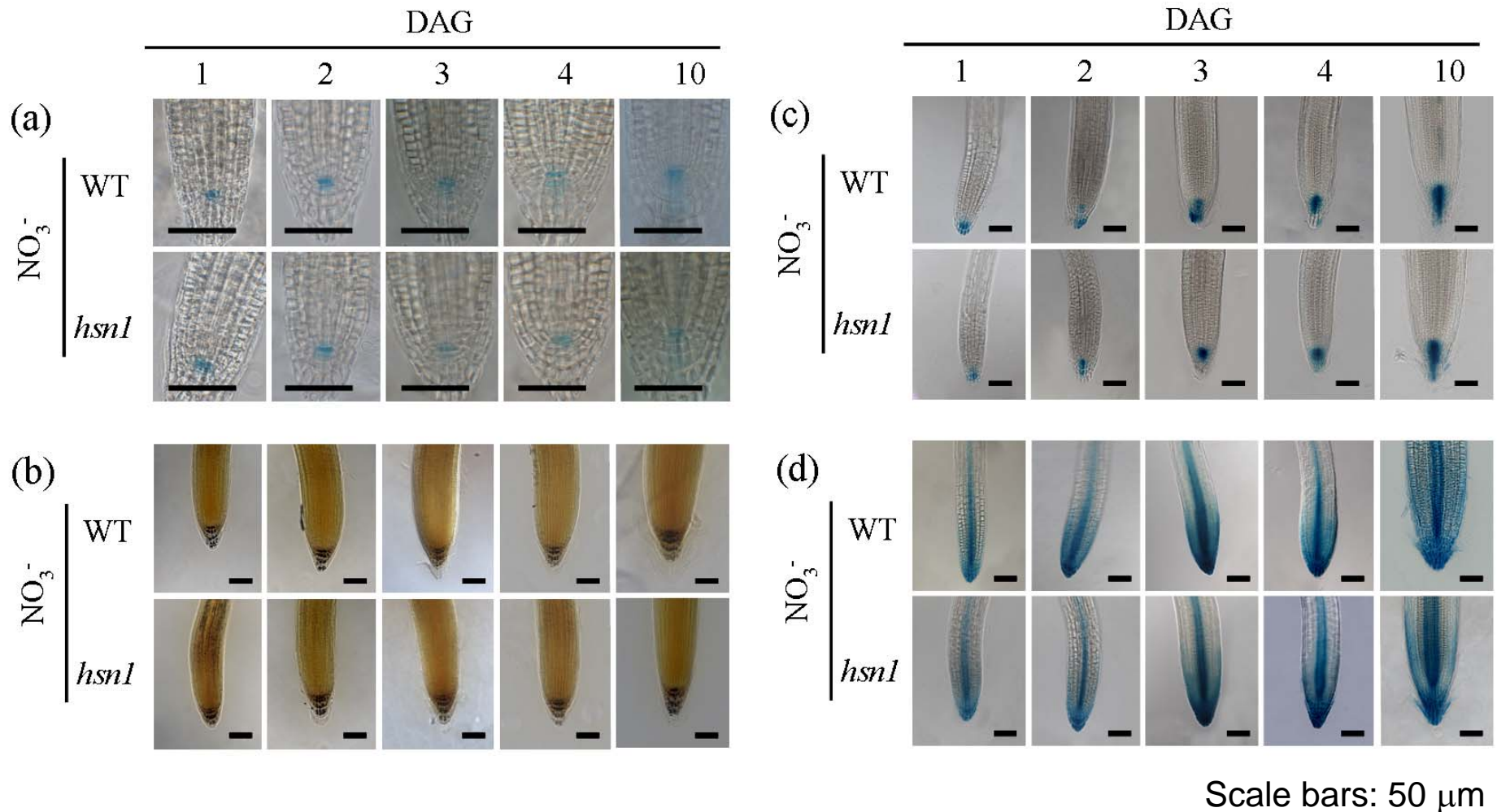


Fig. S3 *QC25::GUS* marker expression (a), staining of starch granule in columella cells (b), *DR5::GUS* marker expression (c), and *IAA2::GUS* marker expression (d) in primary roots of WT and *hsn1* mutant plants in NO_3^- medium in a time course up to 10 d. These results have been repeated in three separate experiments

Supplemental Fig. 4

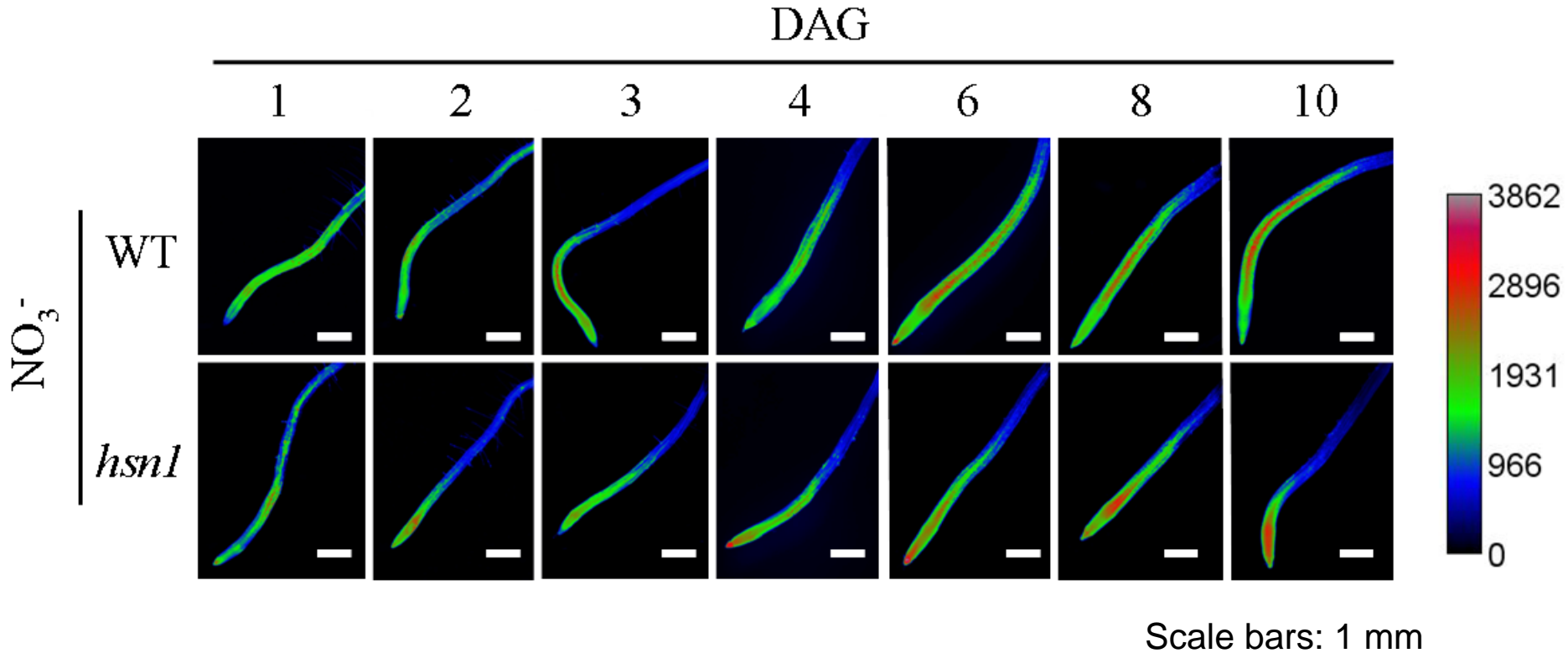


Fig. S4 Analysis of cell death in the roots of WT and *hsn1* mutant plants in NO_3^- medium in a time course up to 10 d. These results have been repeated in three separate experiments