

Fig. S1 HPLC chromatogram of the anthocyanin components in the leaf midrib of 'Heiyoutao'

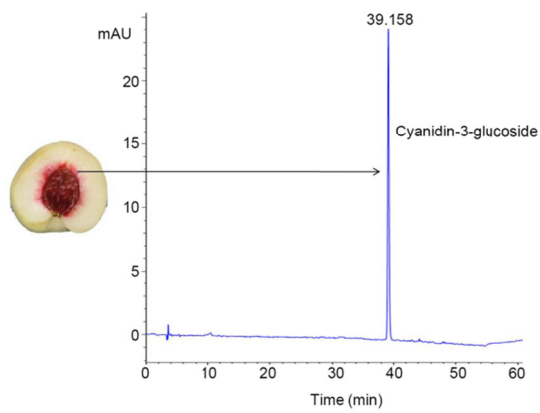


Fig. S2 HPLC chromatogram of the cultivar 'Xuebaitao' from the flesh surrounding the stone at maturity

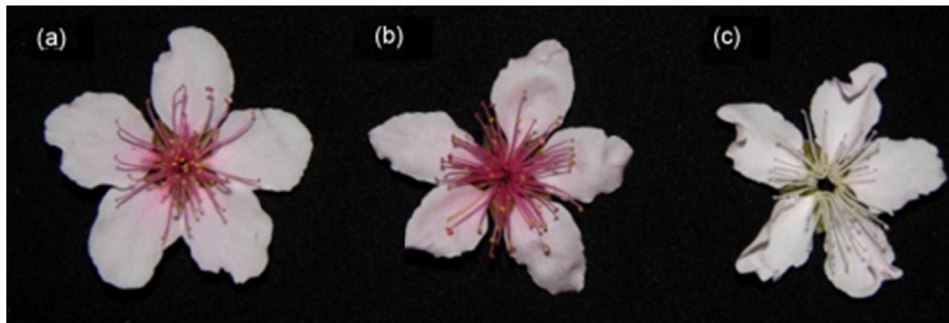


Fig. S3 Petals during full bloom of 'Beijingyixianhong' (a), 'Heiyoutao' (b), and 'Xuebaitao' (c)