

Supplementary Materials:

Successful treatment of accessory breast cancer with endocrine therapy

Chun-xi WANG, Shu-li GUO, Li-na HAN



Fig. S1 Delineation of surgical resection before operation

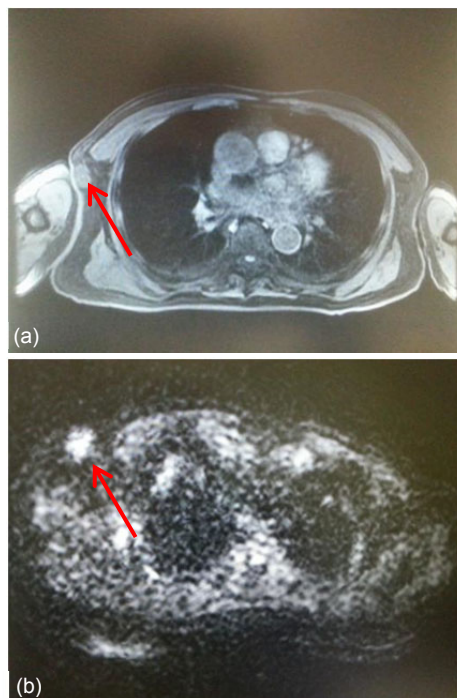


Fig. S2 Magnetic resonance imaging (MRI) findings of the breast

(a) A subcutaneous similar round signal under right axillary of about 1.2 cm×2.0 cm×1.7 cm in size with clear boundary in T1 phase (red allow). (b) The mass showed high signal (red allow) in diffusion weighted imaging



Fig. S3 Cut-down accessory breast cancer
(a) Cut-down accessory breast cancer; (b) Opened accessory breast cancer