

Supplementary materials

## Purification and identification of novel cytotoxic oligopeptides from soft coral *Sarcophyton glaucum*

Yixian QUAH<sup>1</sup>, Nor Ismaliza MOHD ISMAIL<sup>2,3</sup>, Jillian Lean Sim OOI<sup>4</sup>, Yang Amri AFFENDI<sup>5,6</sup>,  
Fazilah ABD MANAN<sup>7</sup>, Lai-Kuan TEH<sup>3,8</sup>, Fai-Chu WONG<sup>1,3</sup>, Tsun-Thai CHAI<sup>1,3</sup>

<sup>1</sup>Department of Chemical Science, Faculty of Science, Universiti Tunku Abdul Rahman, 31900 Kampar, Malaysia

<sup>2</sup>Department of Biological Science, Faculty of Science, Universiti Tunku Abdul Rahman, 31900 Kampar, Malaysia

<sup>3</sup>Centre for Biodiversity Research, Universiti Tunku Abdul Rahman, 31900 Kampar, Malaysia

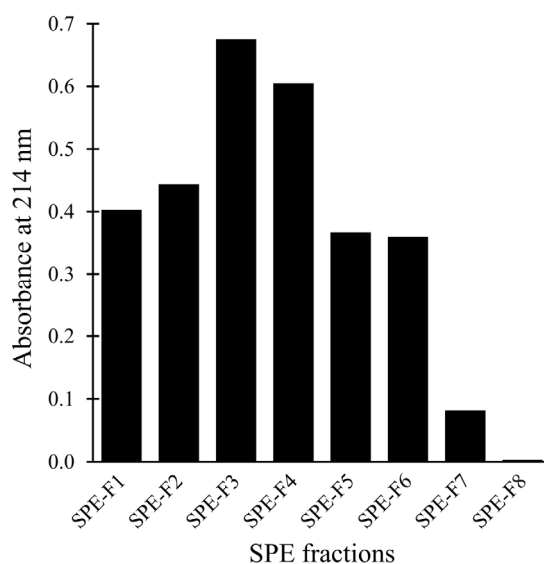
<sup>4</sup>Department of Geography, Faculty of Arts and Social Sciences, University of Malaya, 50603 Kuala Lumpur, Malaysia

<sup>5</sup>Institute of Biological Sciences, Faculty of Science, University of Malaya, 50603 Kuala Lumpur, Malaysia

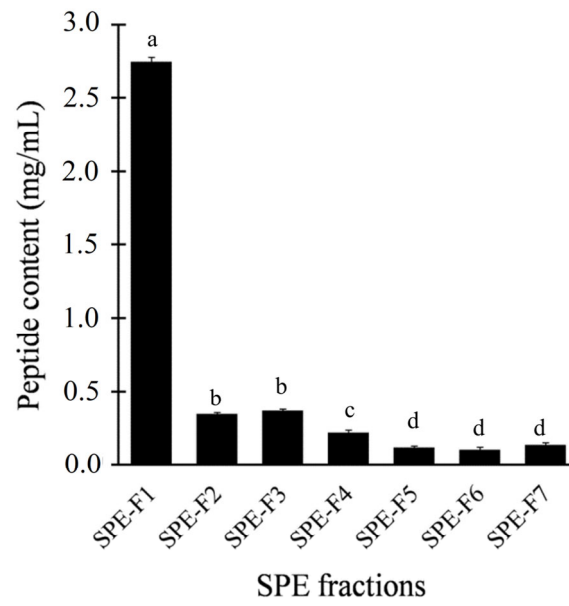
<sup>6</sup>Institute of Ocean and Earth Sciences, University of Malaya, 50603 Kuala Lumpur, Malaysia

<sup>7</sup>Department of Biosciences, Faculty of Science, Universiti Teknologi Malaysia, 81310 UTM Johor Bahru, Malaysia

<sup>8</sup>Department of Biomedical Science, Faculty of Science, Universiti Tunku Abdul Rahman, 31900 Kampar, Malaysia



**Fig. S1** A representative SPE elution profile of GF3



**Fig. S2 Peptide content of SPE fractions**

Data are mean±standard errors ( $n=3$ ). Data labelled by different letters are significantly different ( $P<0.05$ ) according to the Fisher's LSD test