

Table S1 Primers used for qPCR

Primer name	Sequence (5'→3')
Human FGF21-forward	CTGCAGCTGAAAGCCTTGAAGC
Human FGF21-reverse	GTATCCGTCCTCAAGAAGCAGC
Human LC3B-forward	ACCCTGAGTCTTCTCTTCAGGT
Human LC3B-reverse	GTTGCGCTTCACAACCTCAGG
Human Actin-forward	CACCATTGGCAATGAGCGGTTC
Human Actin-reverse	CACCATTGGCAATGAGCGGTTC
Mouse FGF21-forward	GTGTCAAAGCCTCTAGGTTTCTT
Mouse FGF21-reverse	GGTACACATTGTAACCGTCCTC
Mouse LC3B-forward	AGAGGGGACCCTAACCCCAT
Mouse LC3B-reverse	CTATAATCACCCGCCTGCC
Mouse Actin-forward	GTGACGTTGACATCCGTAAAGA
Mouse Actin-reverse	GCCGACTCATCGTACTCC

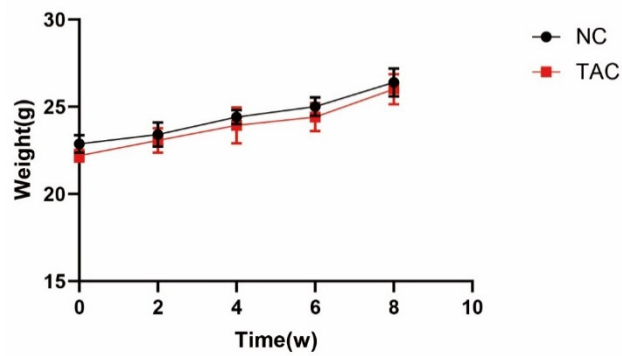


Fig. S1 Weight of mice in the NC and TAC groups.

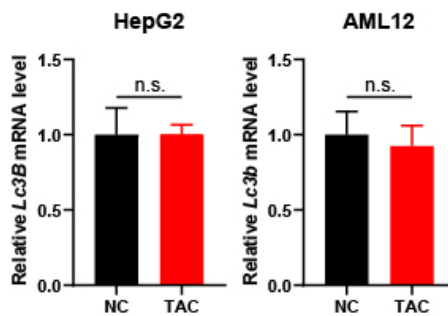


Fig. S2 mRNA levels of LC3B after TAC treatment in HepG2 and AML12 cells.