

Effects of mounting positions and boundary conditions on the sound transmission loss of panels in a niche

Dan YAO, Jie ZHANG, Rui-qian WANG, Xin-biao XIAO

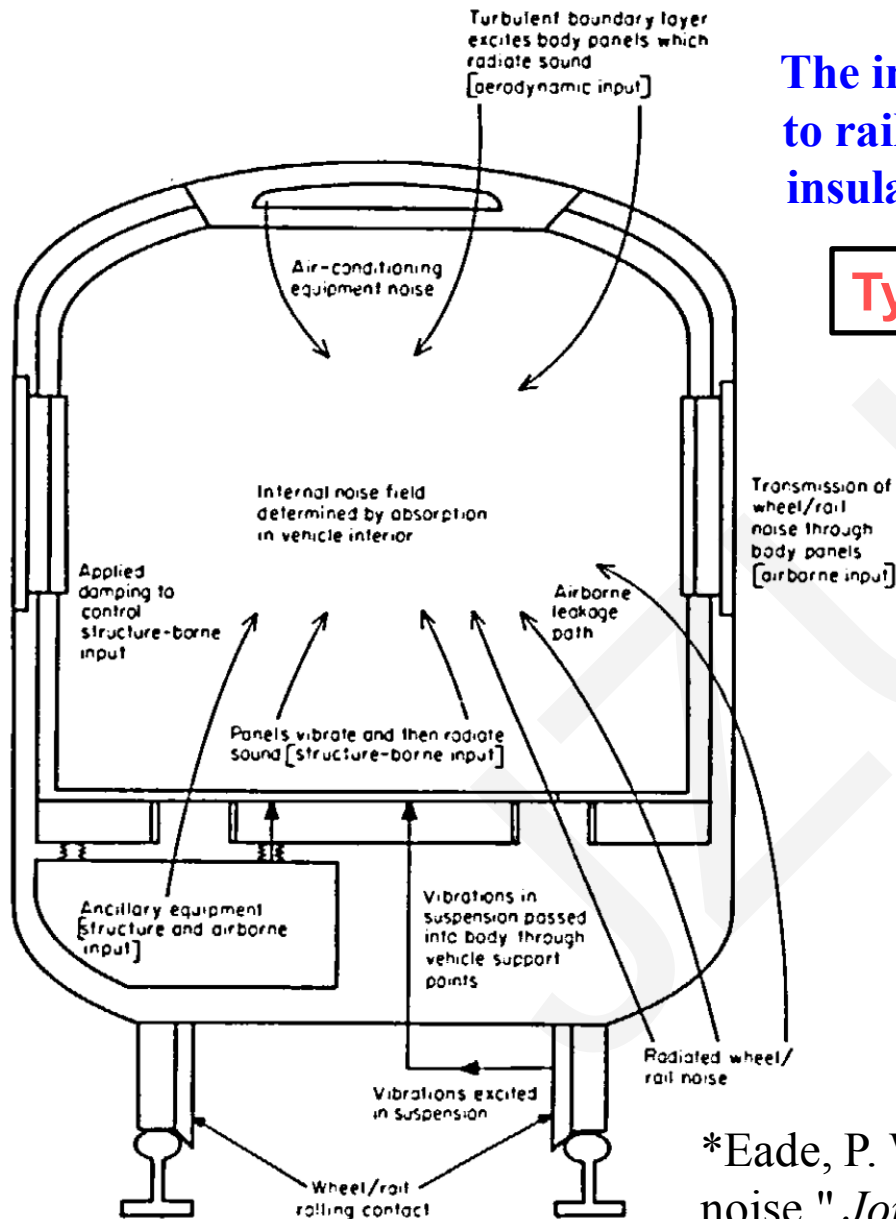
Cite this as: Dan YAO, Jie ZHANG, Rui-qian WANG, Xin-biao XIAO, 2020. Effects of mounting positions and boundary conditions on the sound transmission loss of panels in a niche. *Journal of Zhejiang University-SCIENCE A (Applied Physics & Engineering)*, 21(2):129-146.

<https://doi.org/10.1631/jzus.A1900494>

Background

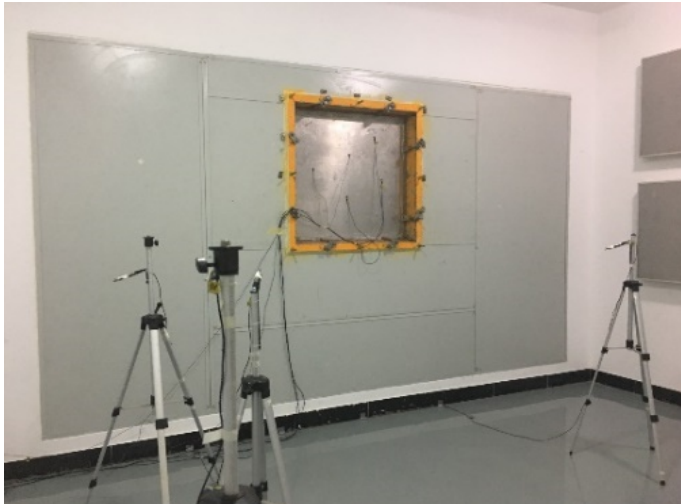
The interior noise of railway vehicles is closely related to railway panel structures, it is critical to study noise insulation characteristics of railway panel structures.

Typical railway vehicle floor structures

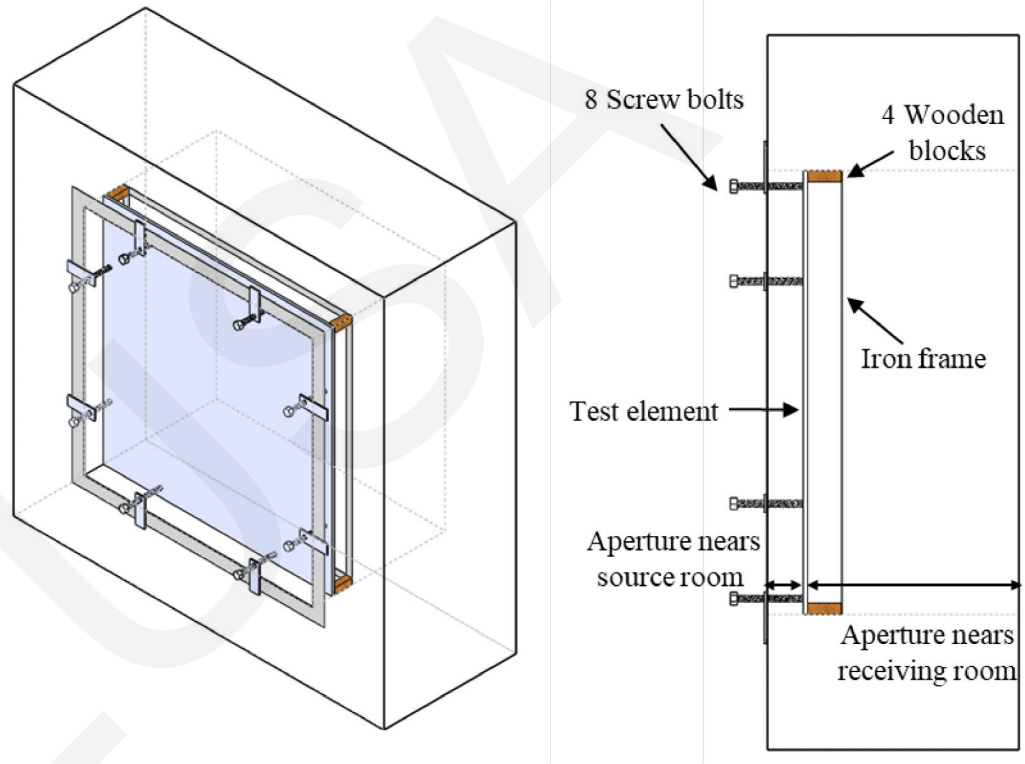


*Eade, P. W., and A. E. J. Hardy. "Railway vehicle internal noise." *Journal of Sound and Vibration* 51.3 (1977): 403-415.

STL measurement set-ups



Rooms for the STL measurements

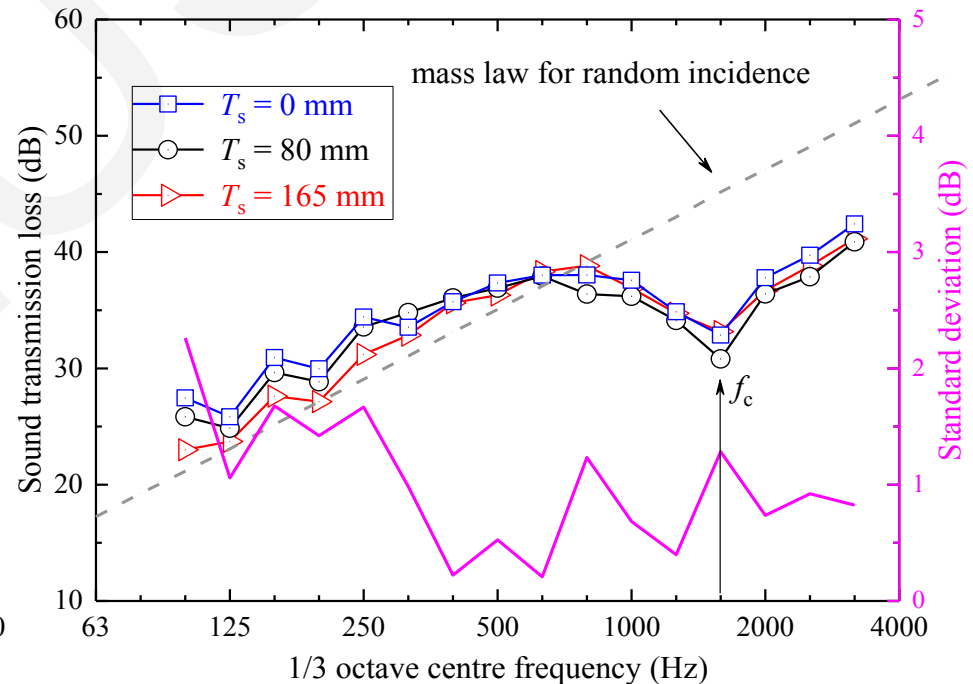
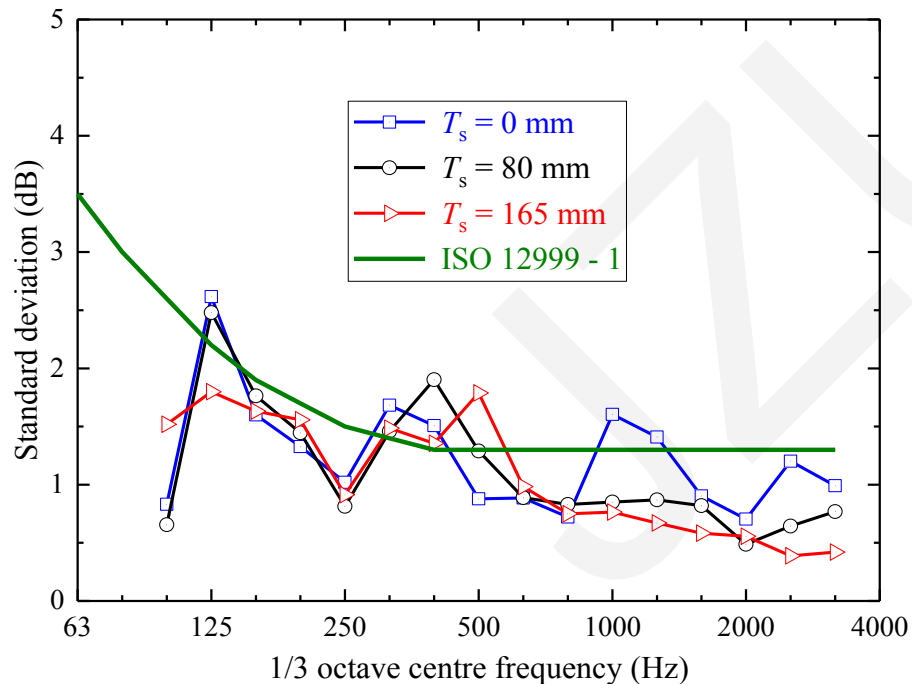


In sound transmission loss (STL) measurements, the test results will be significantly influenced by different mounting positions and boundary conditions..

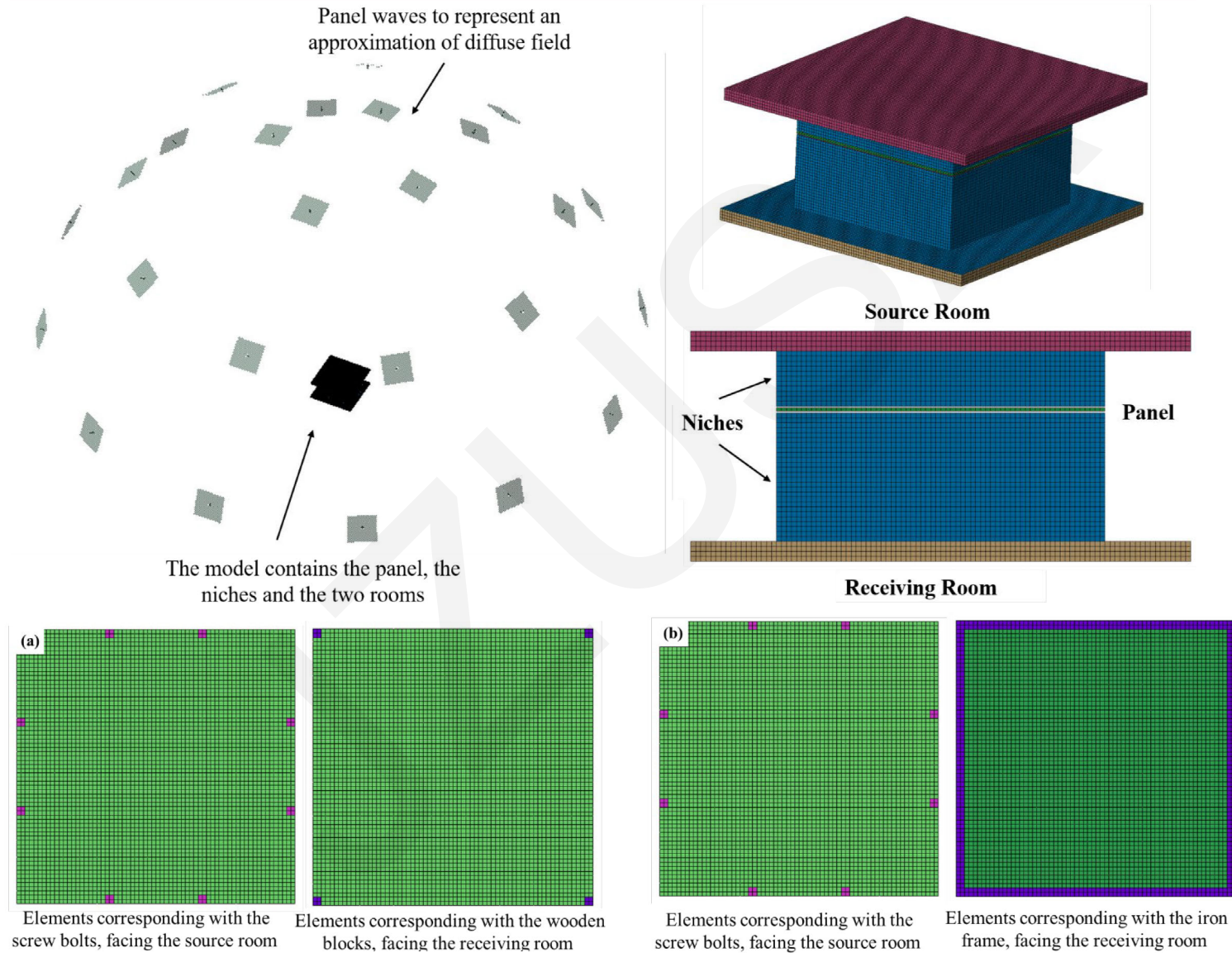
Measurement results

■ STL results for the aluminium panel

Test Conditions	Mounting positions			Boundary conditions	
	T_s (mm)	h (mm)	T_r (mm)	Restrains on the source room side	Restrains on the receiving room side
Condition 1	0	10	550	8 screw bolts	4 wooden blocks
Condition 2	80	10	470	8 screw bolts	4 wooden blocks
Condition 3	165	10	385	8 screw bolts	iron frame

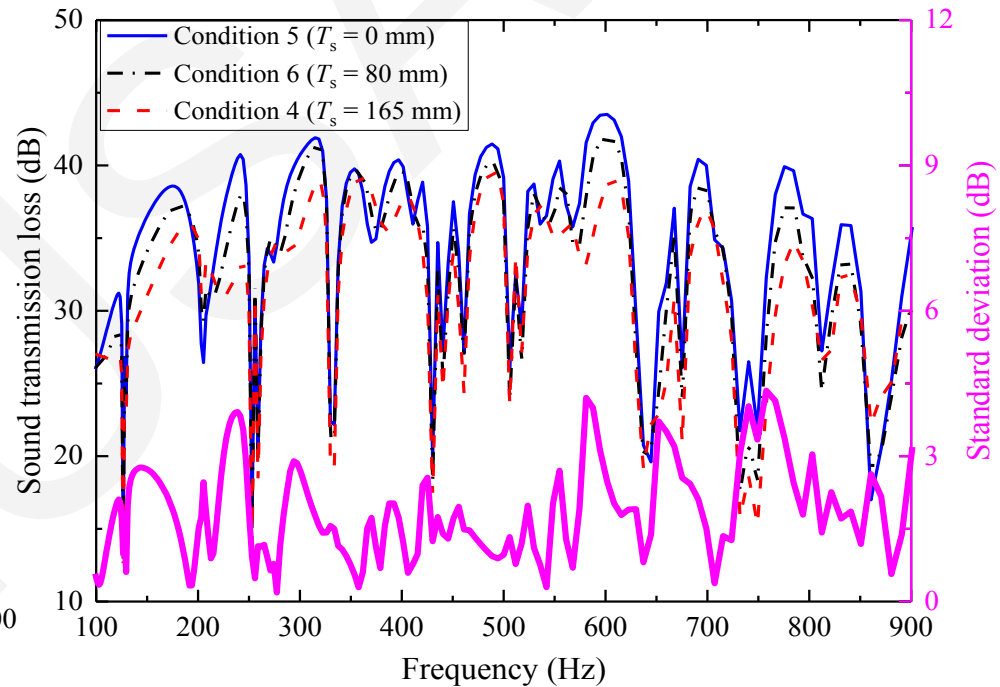
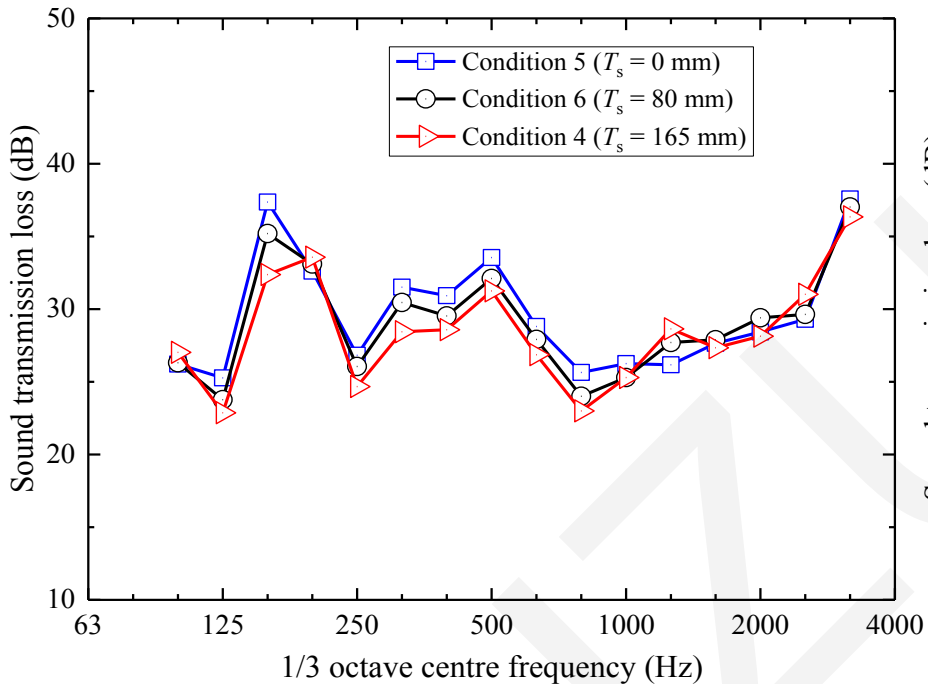


STL prediction model



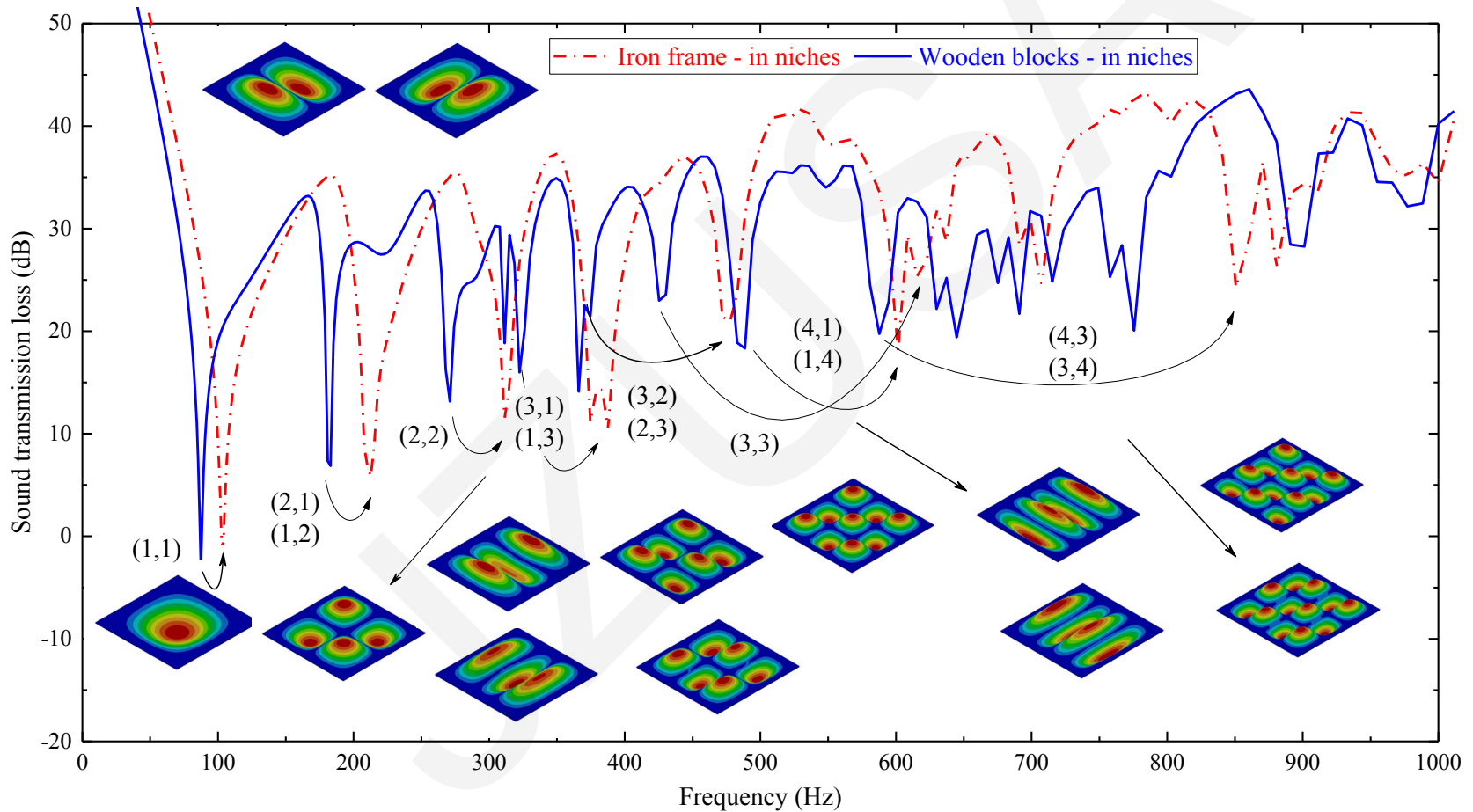
Results and discussion

■ Effects of the mounting positions



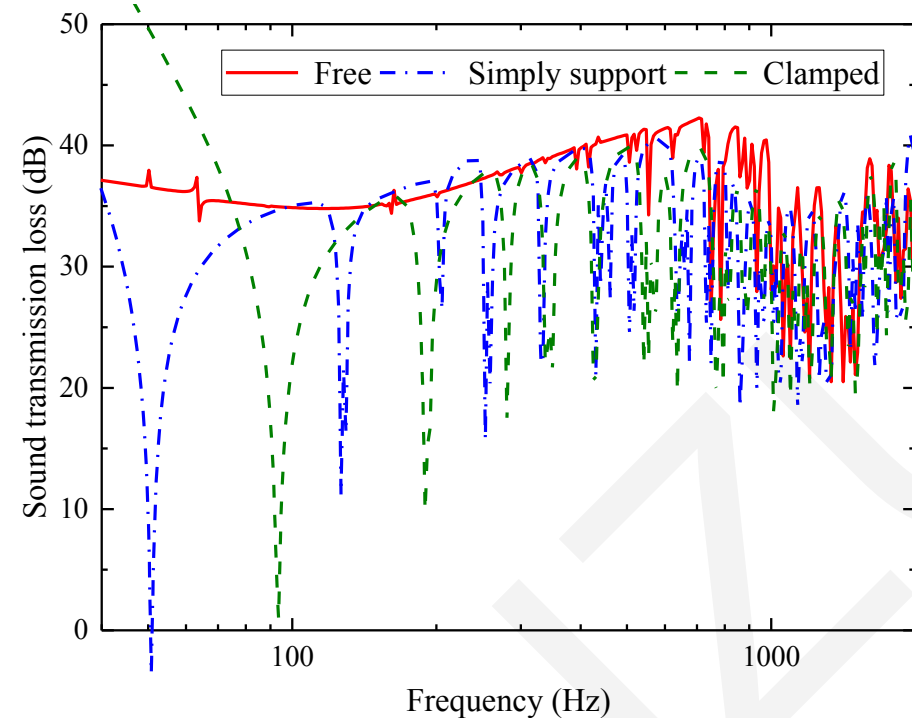
Results and discussion

■ Effects of the boundary conditions

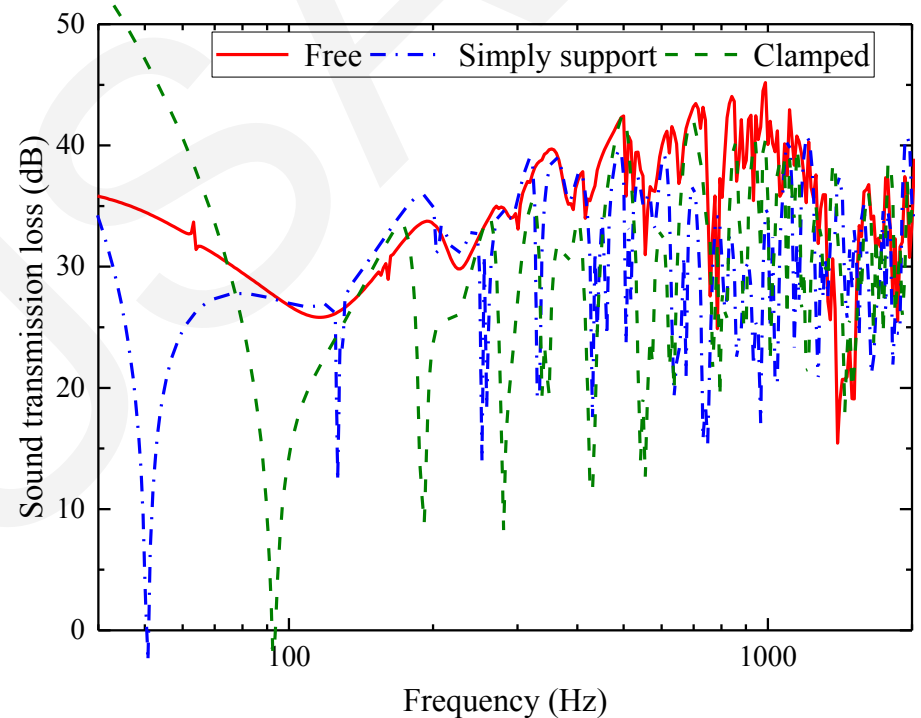


Results and discussion

■ Effects of the cavity and the boundary conditions



STL results for the baffled panel



STL results for the panel in niches

Conclusions

- In this study, two typical interior floor panels are tested in a series of mounting conditions and mechanical boundary conditions.
- The change of STL results during measurement is also predicted by an STL prediction model based on the finite element method.
- At lower frequencies, the STL results are influenced by both the mounting positions and the mechanical boundary conditions. At higher frequencies, the STL results are mainly influenced by the mechanical boundary conditions.
- Considering both the effects of mounting positions and mechanical boundary conditions, the existence of the cavity amplifies the STL difference caused by the mechanical boundary conditions.

