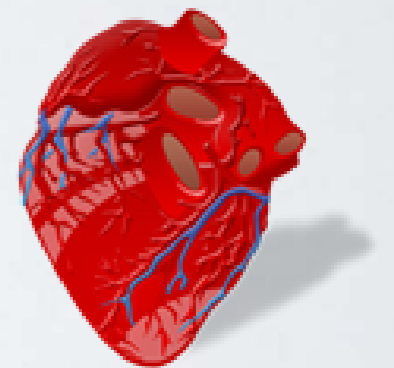


Cite this as: Geng Qian, Chen Wu, Yun-dai Chen, Chen-chen Tu, Jin-wen Wang, Yong-an Qian, 2014. Predictive factors of cardiac rupture in patients with ST-elevation myocardial infarction. *Journal of Zhejiang University SCIENCE B (Biomedicine & Biotechnology)*, 15(12):1048-1054. [doi:10.1631/jzus.B1400095]

Predictive factors of cardiac rupture in patients with ST-elevation myocardial infarction

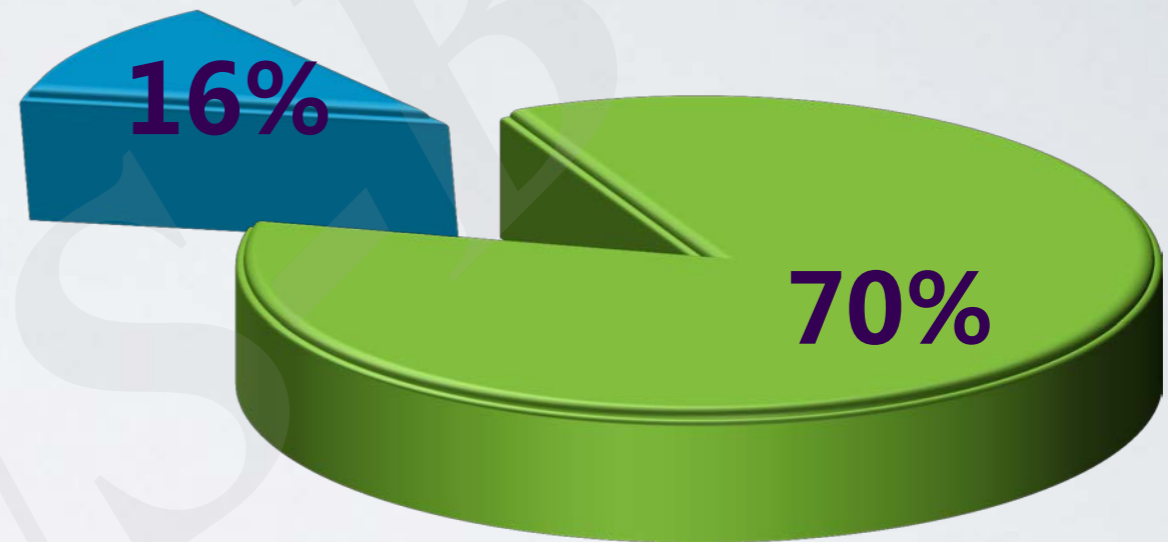
Key words:

ST-elevation myocardial infarction, Risk factor, Anaemia, Cardiac rupture



key problem

**Cardiac rupture
accounted for 16% of
all cause in-hospital
deaths post ST-
elevation myocardial
infarction (STEMI) in
our study**



**Identification of risk
factors of cardiac rupture
in a large Chinese sample**



Research Summary



9798 consecutive STEMI patients with complete clinical data

Professional
Statistics
team



*Chinese People's
Liberation Army
General Hospital*



Beijing An Zhen
Hospital



Beijing Fu Wai
Hospital



Beijing Chao Yang
Hospital



Anhui Lujiang
People's Hospital



Innovation points



Advanced age

Female

Tachycardia

Renal dysfunction

Delayed admission

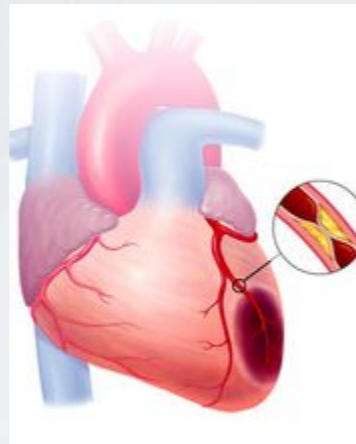
Anemia

cardiac rupture
risk factor

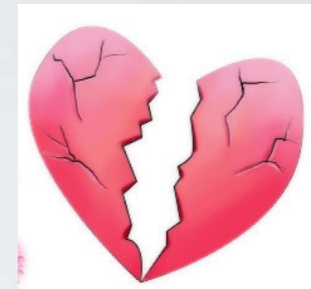
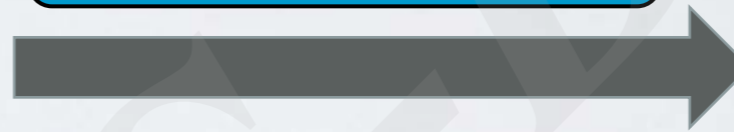


Innovation points

Effective cardiac rupture risk stratifications in STEMI patients



Early prevention



New risk factors of cardiac rupture improved the risk stratifications

