

Cite this as: Hui CHENG, Yin-yin DAI, Ru-hong JIANG, Qiang LIU, Ya-xun SUN, Jian-wei LIN, Zu-wen ZHANG, Shi-quan CHEN, Jun ZHU, Xia SHENG, Chen-yang JIANG, 2014. Non-pulmonary vein foci induced before and after pulmonary vein isolation in patients undergoing ablation therapy for paroxysmal atrial fibrillation: incidence and clinical outcome. *Journal of Zhejiang University-SCIENCE B (Biomedicine & Biotechnology)*, 15(10):915-922. [doi:10.1631/jzus.B1400146]

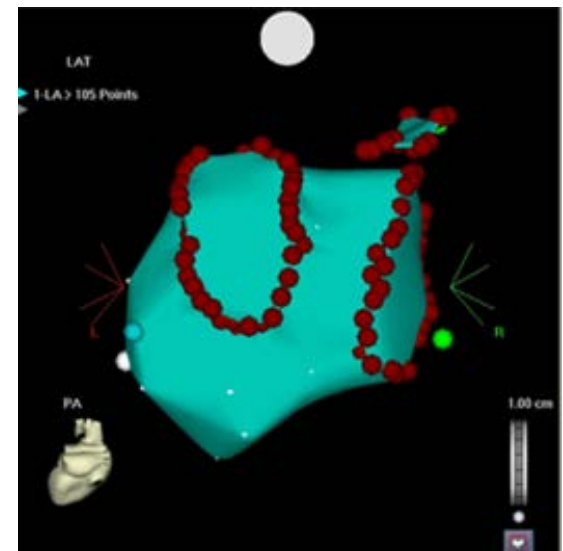
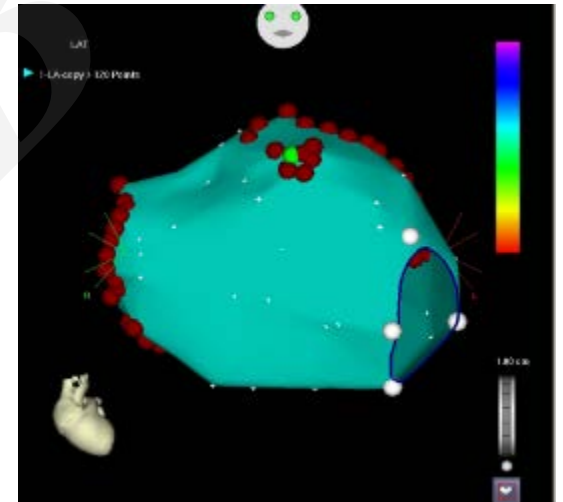
Non-pulmonary vein foci induced before and after pulmonary vein isolation in patients undergoing ablation therapy for paroxysmal atrial fibrillation: incidence and clinical outcome

Key words: Atrial fibrillation, Non-PV foci, ATP

Research Summary

This research mainly focused on different inducibility of non-PV foci before and after CPVI. We discussed the phenomenon in the following aspects:

- **Structural and electrical remodeling of the atrial**
- **The role CANS in AF initiation**
- **Myofascial architecture at the venoatrial junction**

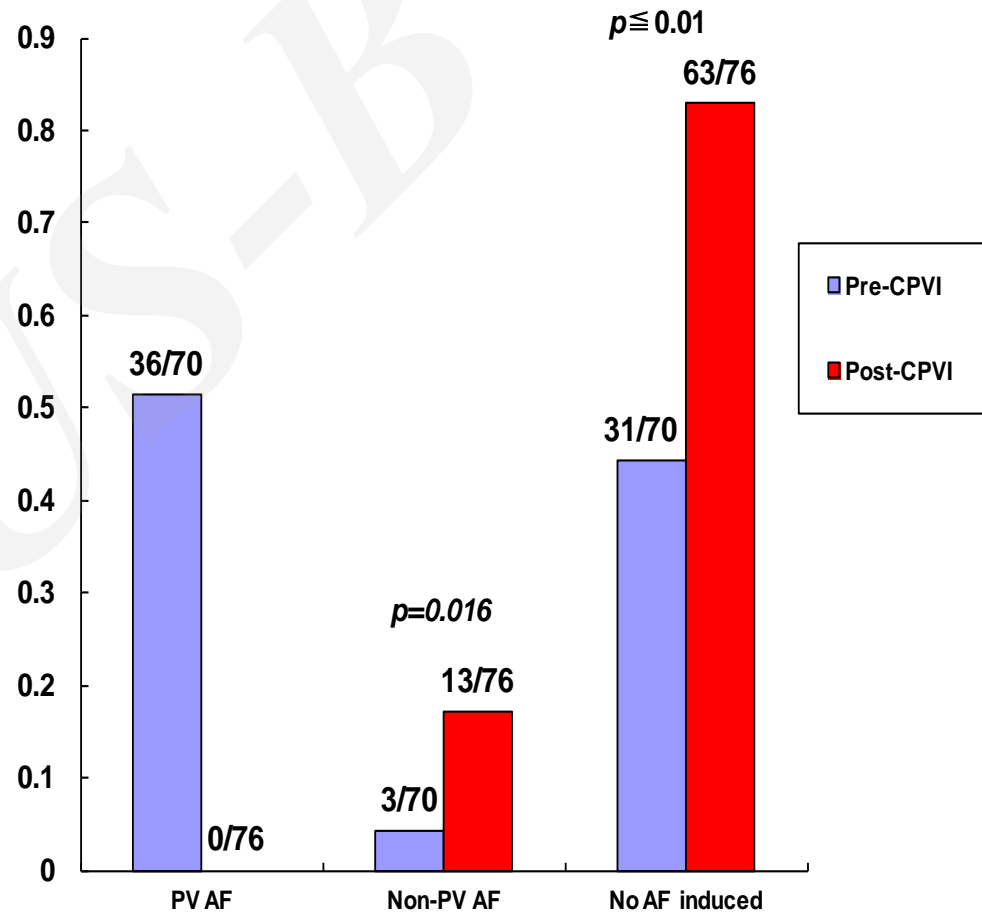


Innovation points

- **Introduction** of the phenomenon that non-PV foci more likely to be induced after CPVI in paroxysmal AF patients

- **Summary** of the possible mechanisms of AF initiation and CPVI

- **Emphasis** of the CPVI's effects on autonomic tone



Innovation points

Supplementary ablation targeting non-PV foci might benefit clinical outcome of patients with non-PV foci.

