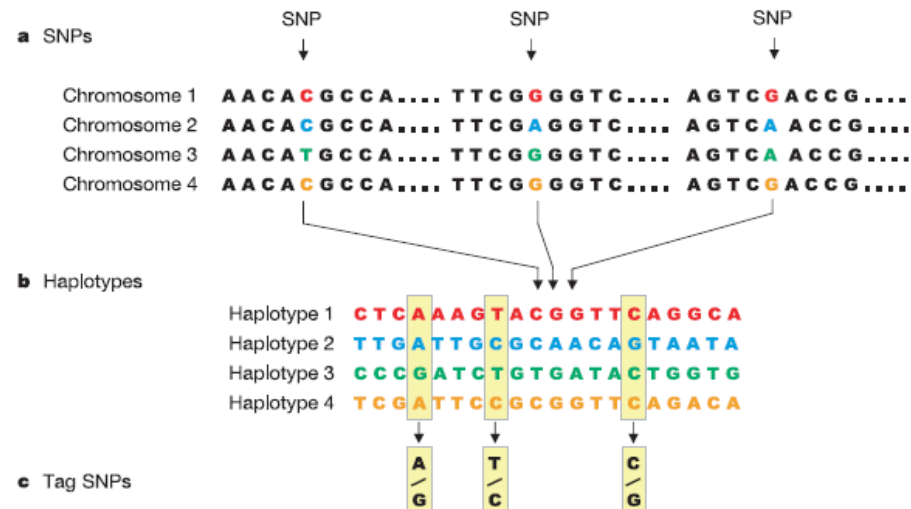


Cite this as: Fang-yu LIN, Zhu HUANG, Ning LU, Wei CHEN, Hui FANG, Wei HAN, 2016. Controversial opinion: evaluation of *EGR1* and *LAMA2* loci for high myopia in Chinese populations. *Journal of Zhejiang University-Science B (Biomedicine & Biotechnology)*. **17**(3): 225-235.
<http://dx.doi.org/10.1631/jzus.B1500233>

Controversial opinion: evaluation of *EGR1* and *LAMA2* loci for high myopia in Chinese populations

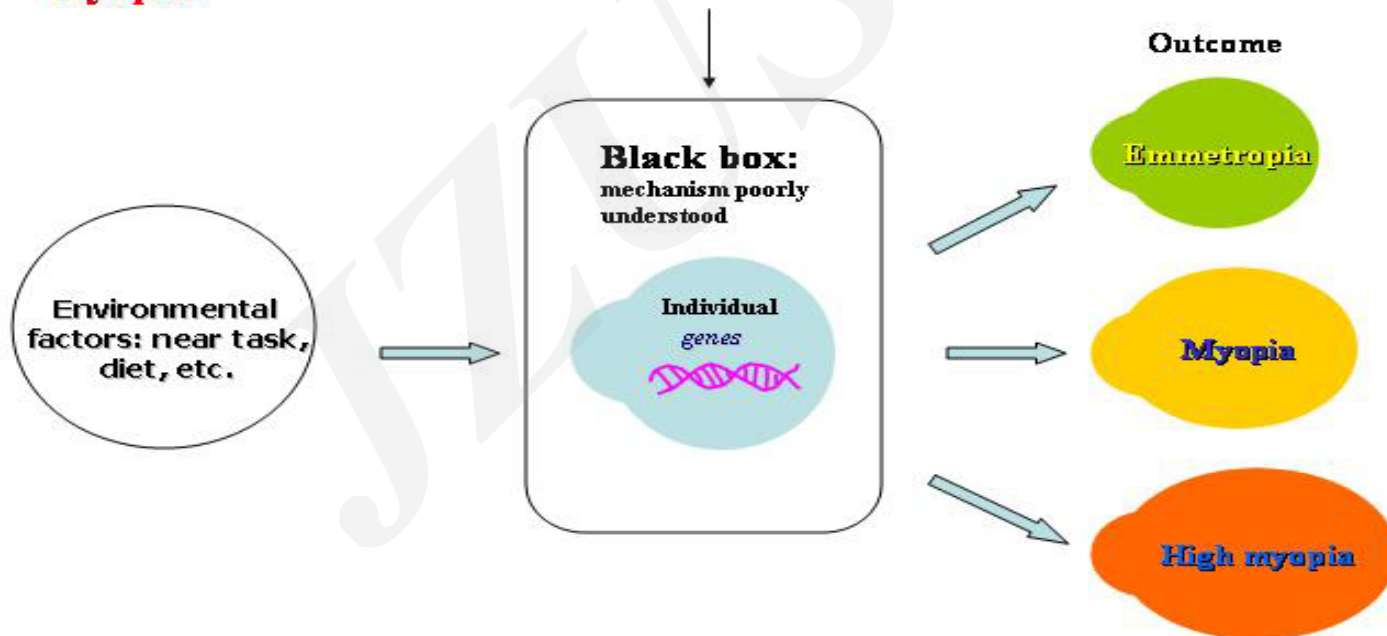
Key words: Myopia, *EGR1*, *LAMA2*, Association study, Single nucleotide polymorphism



Research Summary

This study aimed to evaluate the association of the tagging SNPs (tSNPs) in the EGR1 and LAMA2 genes with high myopia in two independent Han Chinese populations.

AIM: Find the potential candidate genes/loci predisposing to high myopia

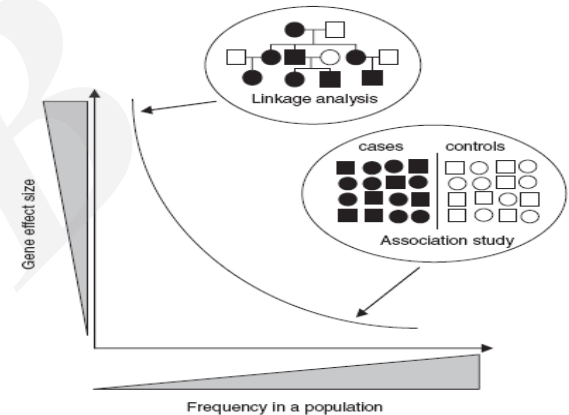


Innovation points

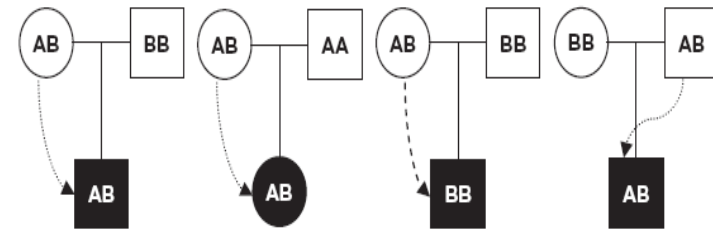
- EGR1 and LAMA2 were important in human eye development and deserved further evaluation in myopia etiology.

- Both family-based and population-based association approaches were applied, and association test results were replicated.

- Both family and population data did not provide significant association results in two independent Han Chinese populations.



Population-based association test



Family-based association test