

**Cite this as:** Zhi-mei TIAN, Xian-yong MA, Xue-fen YANG, Qiu-li FAN, Yun-xia XIONG, Yue-qin QIU, Li WANG, Xiao-lu WEN, Zong-yong JIANG, 2016. Influence of low protein diets on gene expression of digestive enzymes and hormone secretion in the gastrointestinal tract of young weaned piglets. *Journal of Zhejiang University-Science B (Biomedicine & Biotechnology)*. 17(10):742-751.  
<http://dx.doi.org/10.1631/jzus.B1600229>

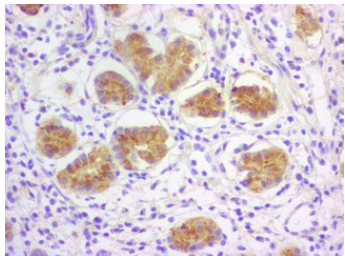
# **Influence of low protein diets on gene expression of digestive enzymes and hormone secretion in the gastrointestinal tract of young weaned piglets**

**Key words:** Dietary protein, piglet, gastrointestinal tract, pancreas, digestion, hormones

# ***Research Summary***

**This article describes the influence of dietary protein on hormones and digestive enzymes in the gastrointestinal tract (GIT) and pancreas of weaned piglets**

- **Growth performance of pigs**
- **mRNA expression of selected digestive enzymes in the duodenum, jejunum and pancreas of pigs**
- **mRNA expression of selected enzymes in the pancreas and stomach in pigs**
- **Concentrations of CCK, SS, and MLN in pigs**
- **Localization of CCK and SS**



# ***Innovation points***

- **Introduction** of effect of dietary CP level on growth and development of pigs.
- **Summary** of effect of dietary CP content on nutrient digestion and hormone concentration in the gastrointestinal tract of young weaned piglets.
- **Emphasis** of the feasibility exploration of low protein diet breeding on weaned piglets.