

Cite this as: Xiao-jian HU, Lun-hao CHEN, Michele C. BATTIÉ, Yue WANG, 2018. Methodology and cohort profile for the Hangzhou Lumbar Spine Study: a study focusing on back health in a Chinese population. *Journal of Zhejiang University-Science B (Biomedicine & Biotechnology)*, 19(7):547-558.
<https://doi.org/10.1631/jzus.B1700484>

Methodology and cohort profile for the Hangzhou Lumbar Spine Study: a study focusing on back health in a Chinese population

Key Words: Back pain, Population-based study, Disc degeneration, Modic changes, Endplate lesions, Methodology

Research Summary

The Hangzhou Lumbar Spine Study is the first population-based epidemiological study conducted to characterize lumbar spinal phenotypes and back pain, their interaction, and their associations with lifetime environmental exposures, in mainland Chinese. Specific purposes of the present study include:

- Introduce the Hangzhou Lumbar Spine Study
- Present the study methodology
- Describe the study sample recruited to date
- Conduct a test-retest reliability of the structured questionnaire

Spine Lab, Department of Orthopedic Surgery
The First Hospital of Zhejiang University, Hangzhou, China 310003



The Hangzhou Lumbar Spine Study

--	--	--	--

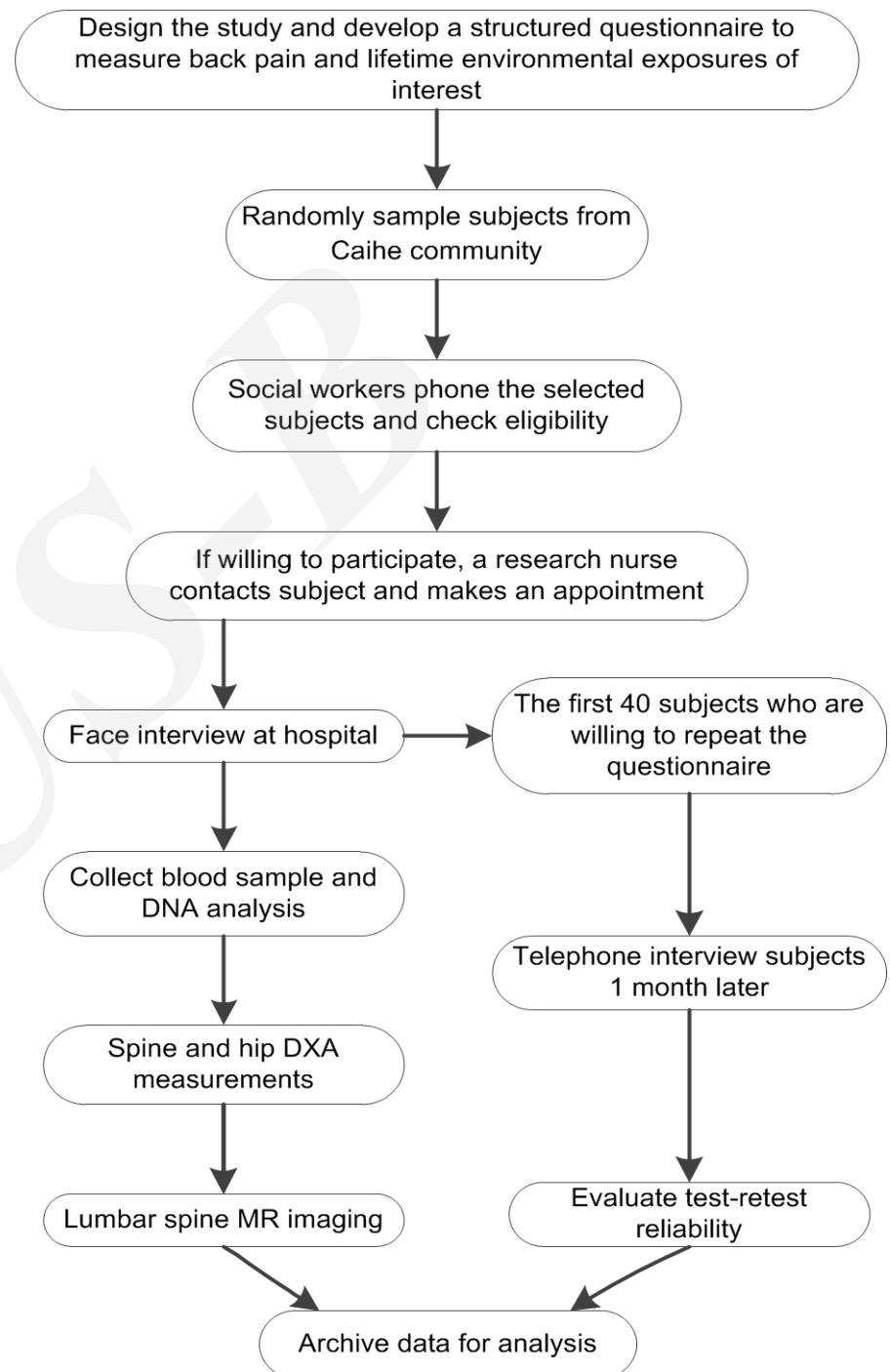
Participant ID

Your answers are important. Please complete each section carefully.

Name:			
Date of Birth:	Year	Month	Day

Innovation Points

- The Hangzhou Lumbar Spine Study is the **first** population-based epidemiological study about back health in mainland China
- Epidemiological information obtained from Hangzhou Lumbar Spine Study may serve as a **valuable reference** for future studies on back health, particularly for mainland Chinese
- Subjects were **randomly selected** from a typical Chinese community
- The structured back health questionnaire was **reliable** to record back health related information



Innovation Points

A series of comprehensive tables were generated to summarize the study results

Table 1 | Demographic Characteristics and Health Behaviors of Study Subjects.

Table 2 | Test-retest Reliability for Demographic Characteristics, General Lifestyle, Health Behaviors, and Sports and Exercise History.

Table 3 | Test-retest Reliability for Occupational Demands and Occupational History .

Table 4 | Test-retest Reliability for Back Pain History in Caihe Community.