

***Cite this as:*** Wan-qin HE, Jia-yu WU, Yi-yi REN, Xue-ping ZHOU, Song-bai ZHANG, Ya-juan QIAN, Fang-fang LI, Jian-xiang WU, 2020. Highly sensitive serological approaches for *Pepino mosaic virus* detection. *Journal of Zhejiang University-Science B (Biomedicine & Biotechnology)*, **21**(10):811-822.  
<http://doi.org/10.1631/jzus.B2000255>

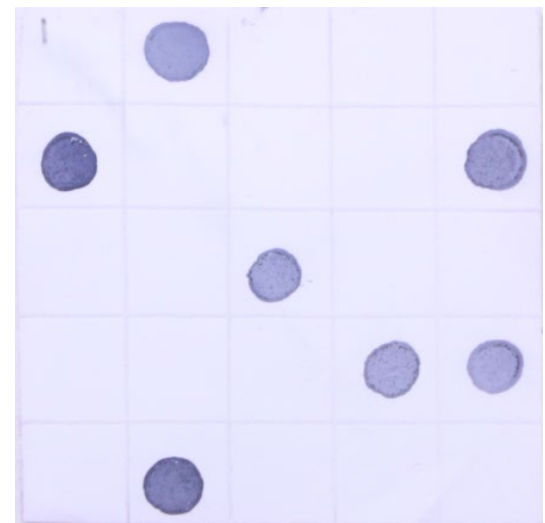
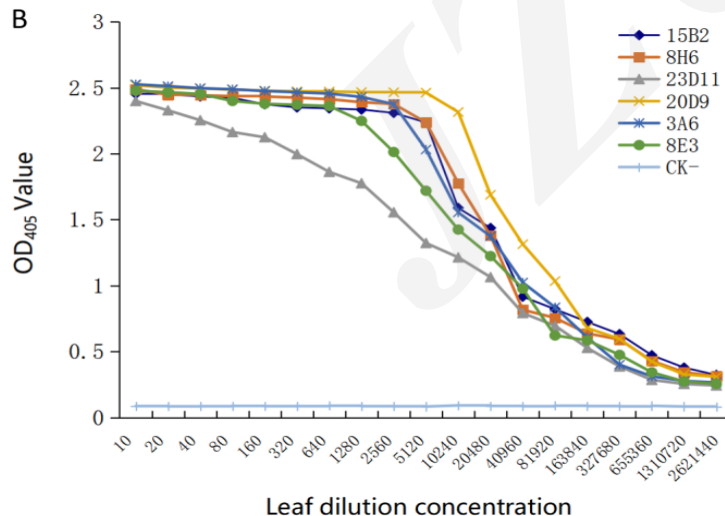
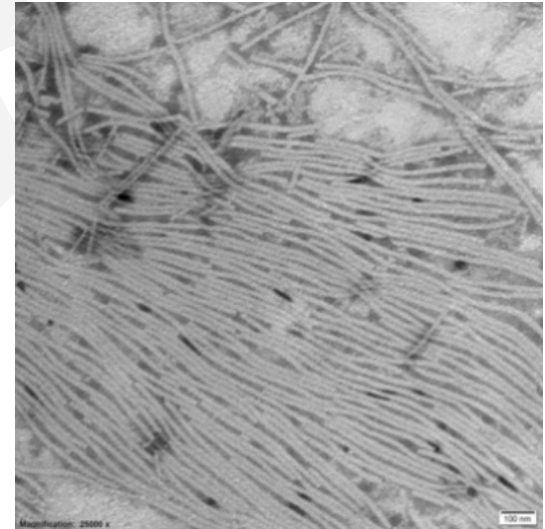
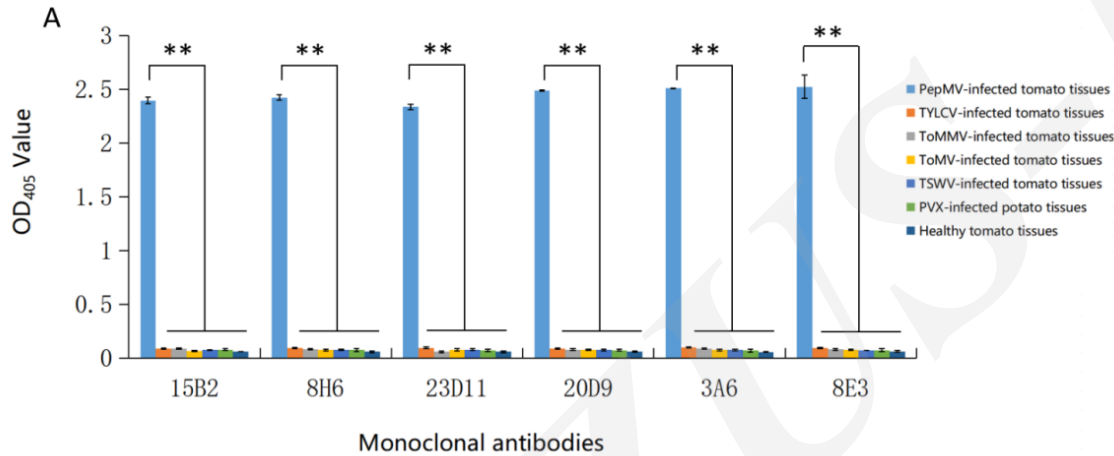
# Highly sensitive serological approaches for *Pepino mosaic virus* detection

**Key words:** *Pepino mosaic virus*, Monoclonal antibody, Serological method, DAS-ELISA, Dot-ELISA, Tissue print-ELISA

# Research Summary

This study focused on the preparation of highly specific and sensitive monoclonal antibodies (MAbs) against Pepino mosaic virus, and serological assays for the virus detection:

- Six highly specific and sensitive MAbs against PepMV were prepared
- Three serological approaches, DAS-ELISA, Dot-ELISA and Tissue print-ELISA were developed for monitor PepMV in plants
- PepMV was firstly found on tomato plants in China



# Innovation points

- Production of six highly specific and sensitive MAbs against PepMV
- Establishment of highly specific and sensitive serological assays for PepMV detection

