

Cite this as: Congying ZHAO, Jinlong YANG, Hui XU, Shuyan MEI, Yating FANG, Qiong LAN, Yajun DENG, Bofeng ZHU. Genetic diversity analysis of forty-three insertion/deletion loci for forensic individual identification in Han Chinese from Beijing based on a novel panel[J]. Journal of Zhejiang University Science B, 2022, 23(3): 241-248.
<https://doi.org/10.1631/jzus.B2100507>

Genetic diversity analysis of forty-three insertion/deletion loci for forensic individual identification in Han Chinese from Beijing based on a novel panel

Key words: Insertion/deletion (InDel), Han Chinese from Beijing, Individual identification

Research Summary

•Genetic polymorphisms and forensic parameters of 43 InDel loci were investigated in Han Chinese from Beijing (n=301).

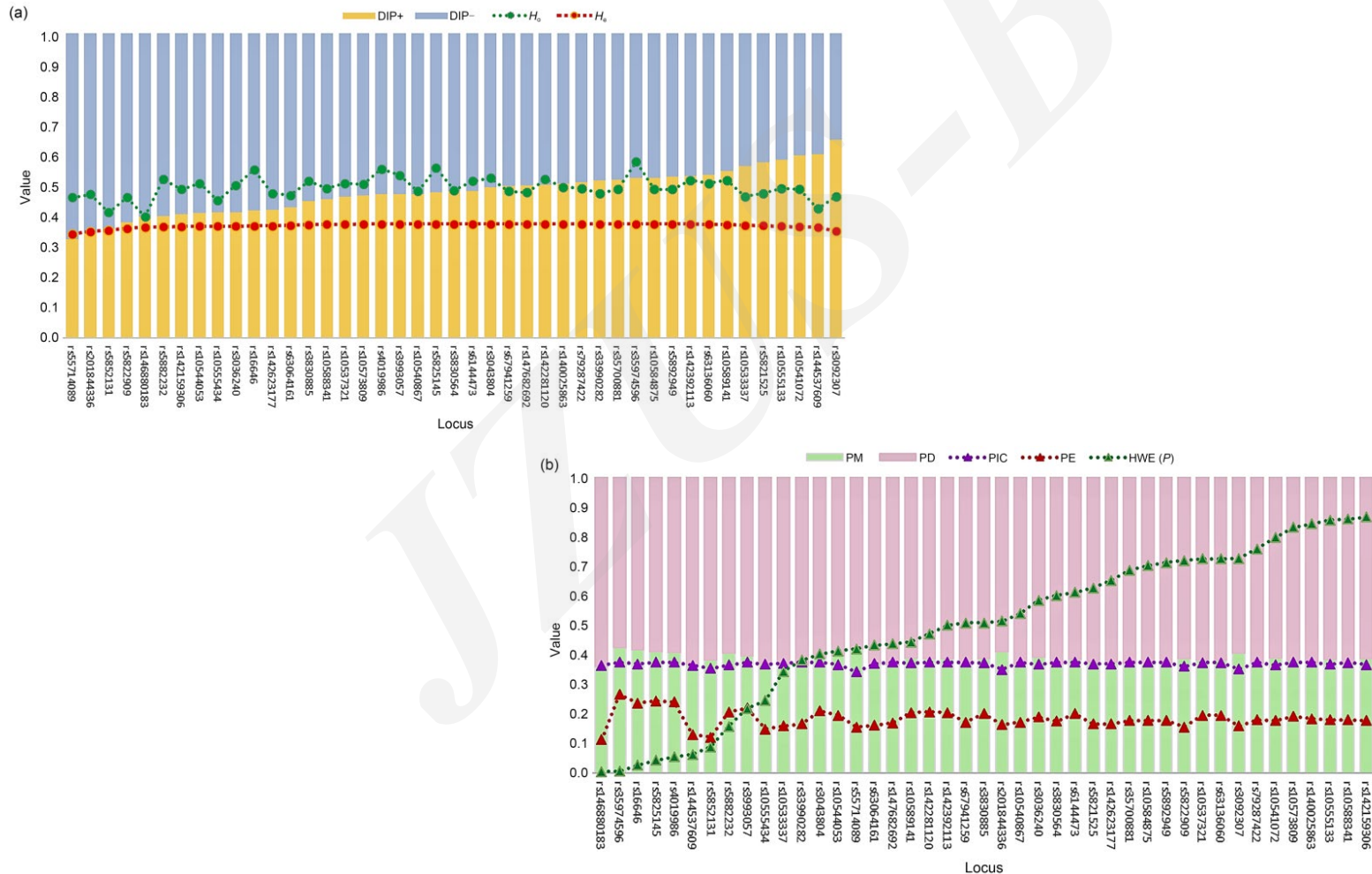


Fig. 1

Research Summary

- Population genetic relationships among 27 populations were analyzed based on 19 overlapped InDel loci.

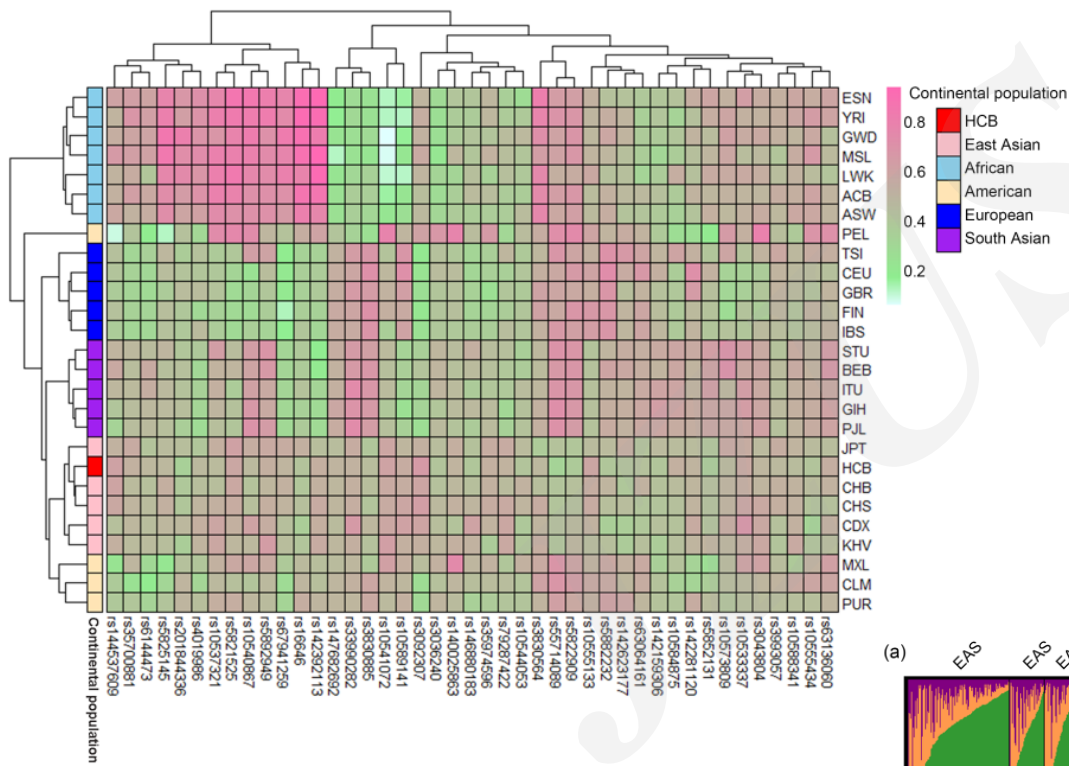


Fig. 2

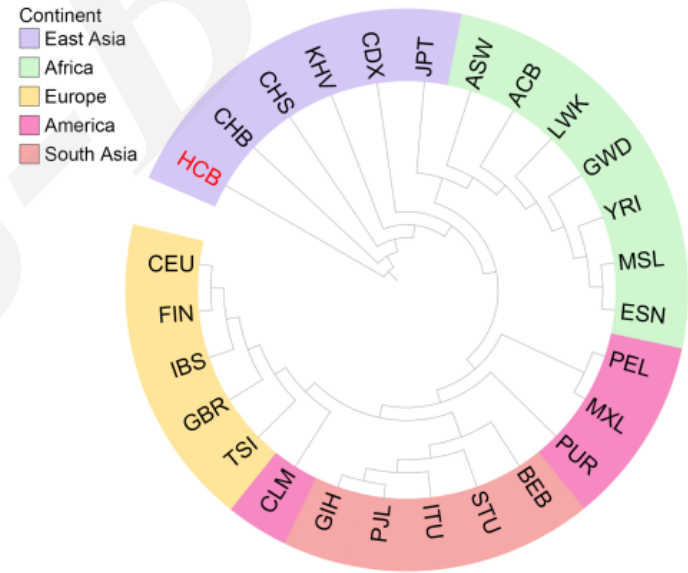


Fig. 6

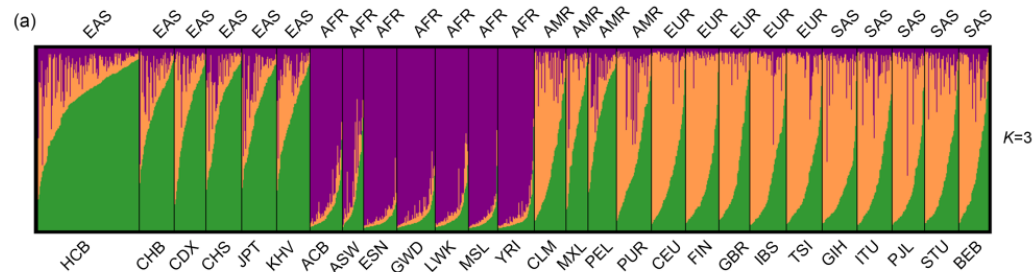


Fig. 7a

Innovation points

- **The 43 InDel loci could be utilized in individual identification and parentage testing in Han Chinese from Beijing.**
- **Closer genetic relationships were observed between the Han Chinese from Beijing and Han populations from Chinese different regions.**