

***Cite this as:*** Jianjia HUANG, Yuman BAI, Wenting XIE, Rongmei WANG, Wenyue QIU, Shuilian ZHOU, Zhaoxin TANG, Jianzhao LIAO, Rongsheng SU. *Lycium barbarum* polysaccharides ameliorate canine acute liver injury by reducing oxidative stress, protecting mitochondrial function, and regulating metabolic pathways[J]. Journal of Zhejiang University Science B, 2023, 24(2): 157-171.  
<http://doi.org/10.1631/jzus.B2200213>

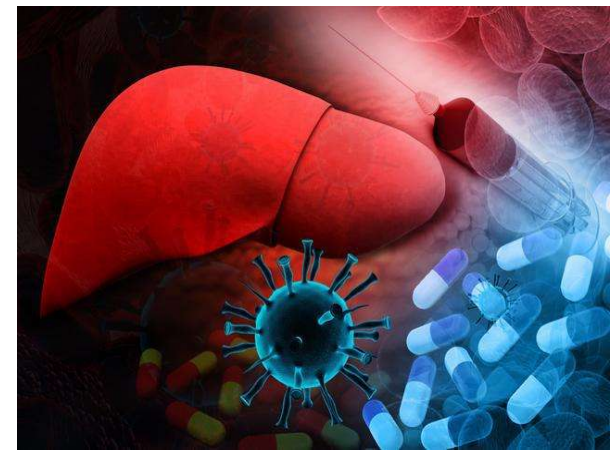
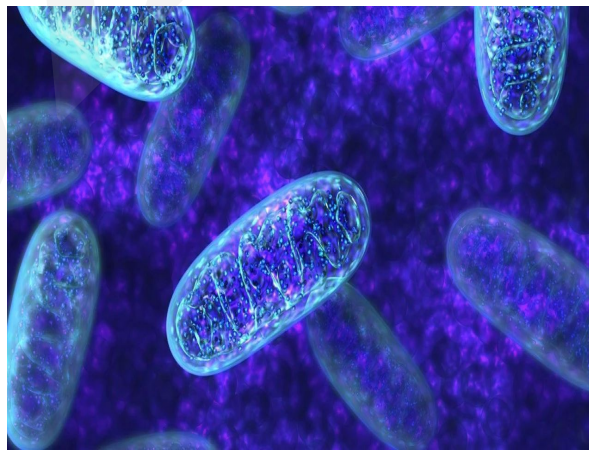
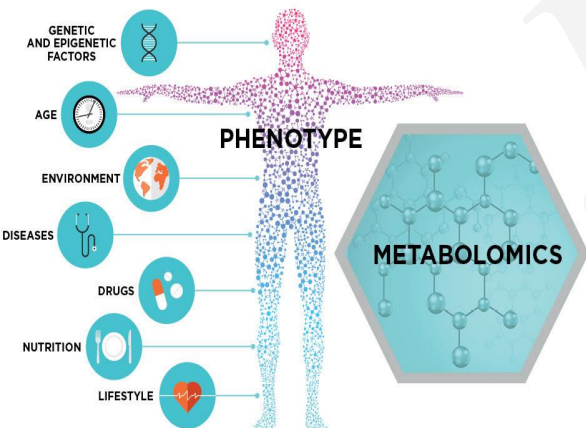
***Lycium barbarum* polysaccharides  
ameliorate canine acute liver injury by  
reducing oxidative stress, protecting  
mitochondrial function, and regulating  
metabolic pathways**

**Key words:** Acute liver injury, Oxidative stress, Mitochondrial dysfunction, Metabolomics, *Lycium barbarum* polysaccharides

# Research Summary

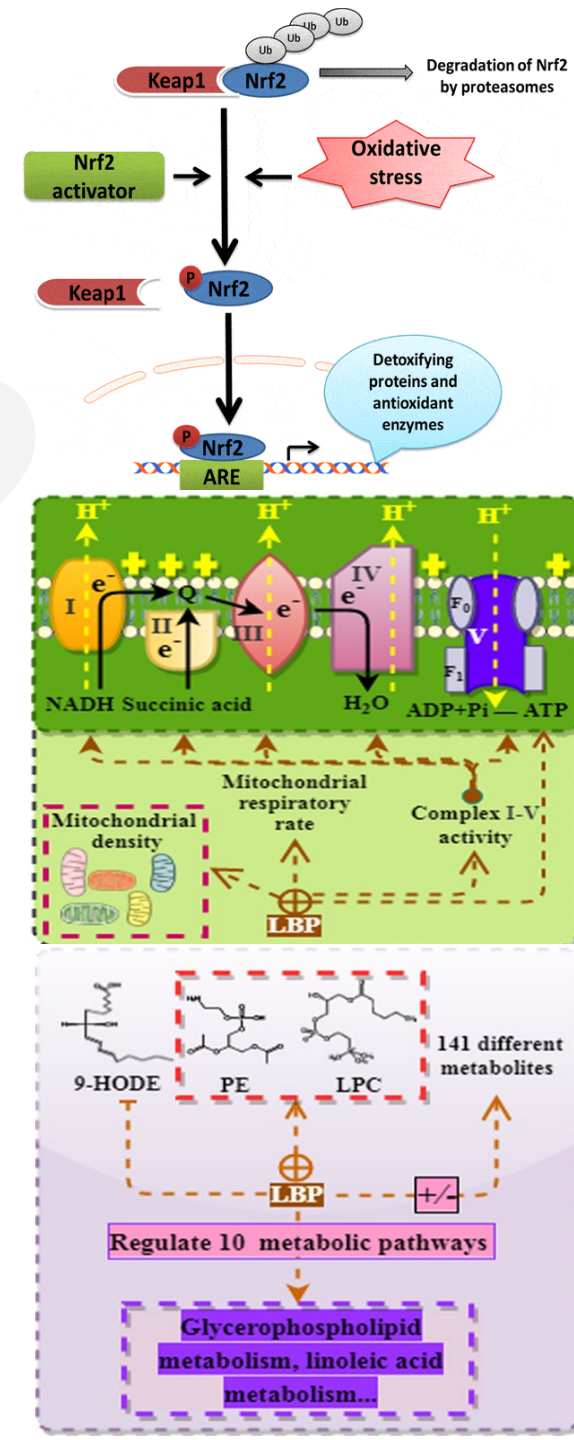
This study mainly found a new “liver protective agent”- *Lycium barbarum* polysaccharides, which can treat the liver injury in the following ways to protect the liver:

- Reduce oxidative stress
- Improve mitochondrial dysfunction
- Regulate metabolic pathways of the body



# Innovation points

- The hepatoprotective effects of LBPs were described at various levels, including histopathological changes and molecular biology
- Three factors—oxidative stress, mitochondrial function, and metabolic pathway—were used to summarize the mechanism of action of LBPs in treating acute liver injury.
- Three biomarkers that can be used to evaluate acute liver injury were screened by serum metabolomics.



# ***Innovation points***

**A series of comprehensive figures and table were generated to summarize the latest knowledge about *Lycium barbarum* polysaccharides.**

**Figure 1 | Protective effect of LBPs on acute liver injury induced by CCl<sub>4</sub>.**

**Figure 2 | Effect of LBPs on p62-Keap1-Nrf2 pathway.**

**Figure 3 | Effects of LBPs on downstream antioxidant genes and proteins of Nrf2.**

**Figure 4 | Effects of LBPs on antioxidant oxidase activity, reductive equivalent and oxidative damage identification indexes.**

**Figure 5 | Effect of LBPs on function of mitochondrial respiration.**

**Figure 6 | The main metabolic pathways and metabolites regulated by LBPs in the treatment of acute liver injury.**

**Table 1 | Compared with the CG, the first 12 metabolites with the most different expression in the MG and TG.**

Journal of Zhejiang University-SCIENCE B

**Thank you for your viewing !**