

**Cite this as:** Xun WANG, Jinqiu HUANG, Zongyan YIN, Ke XU, Dong JIANG, Lijin LIN, Xiaoi ZHANG, Zihui WANG. Carotenoid components and their biosynthesis in a bud mutant of Shiranui mandarin (*Citrus reticulata* Blanco) with citrine flavedo[J]. Journal of Zhejiang University Science B, 2023, 24(1): 94-100.

<http://doi.org/10.1631/jzus.B2200431>

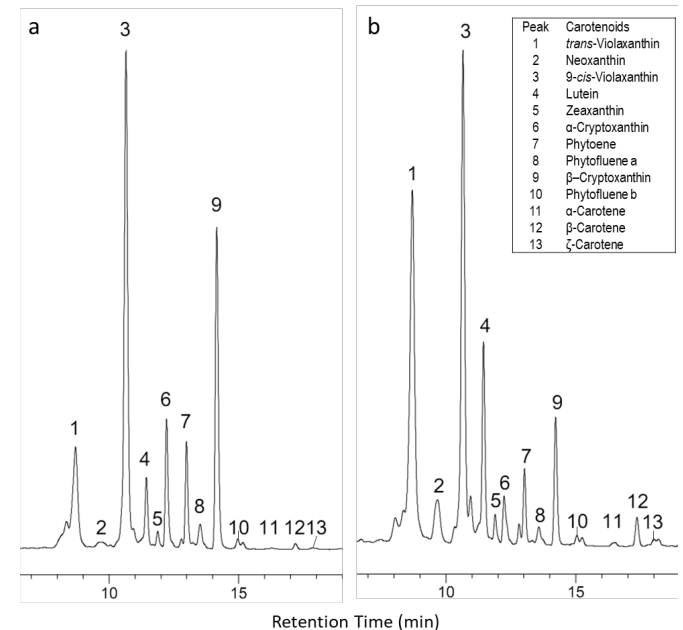
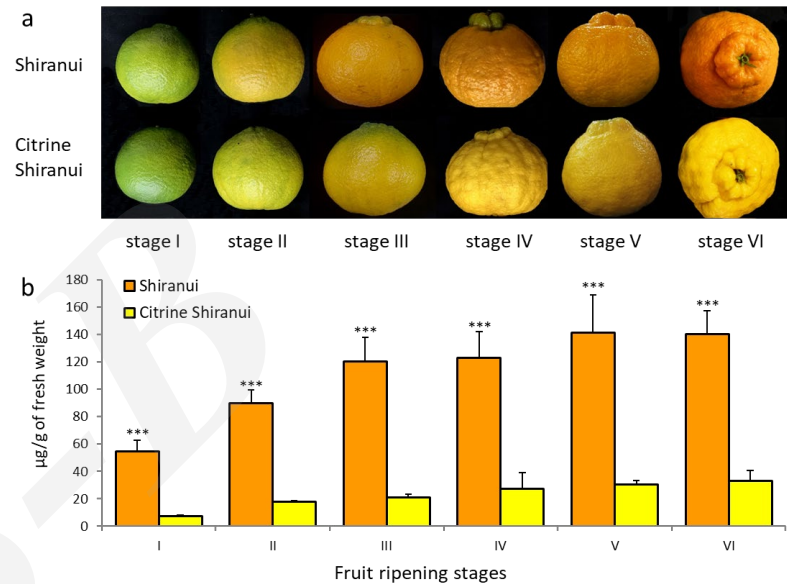
# **Carotenoid components and their biosynthesis in a bud mutant of Shiranui mandarin (*Citrus reticulata* Blanco) with citrine flavedo**

**Key words:** Citrine Shiranui, flavedo pigment, HPLC, carotenoid proportion, gene transcript level

# Research Summary

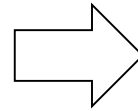
Citrine Shiranui (also named 'Jinlegan') is a spontaneous bud mutation of Shiranui mandarin (*Citrus reticulata* Blanco) found in Southwest China.

- Citrine Shiranui brighter color (citrine/yellow) flavedo of mature fruit. Shiranui has the normal orange color.
- The differences in total carotenoid contents were considered to be the primary cause of the difference in flavedo color.
- Twelve prevalent components of the carotenoid biosynthesis pathway were identified in the flavedo of Shiranui and Citrine Shiranui

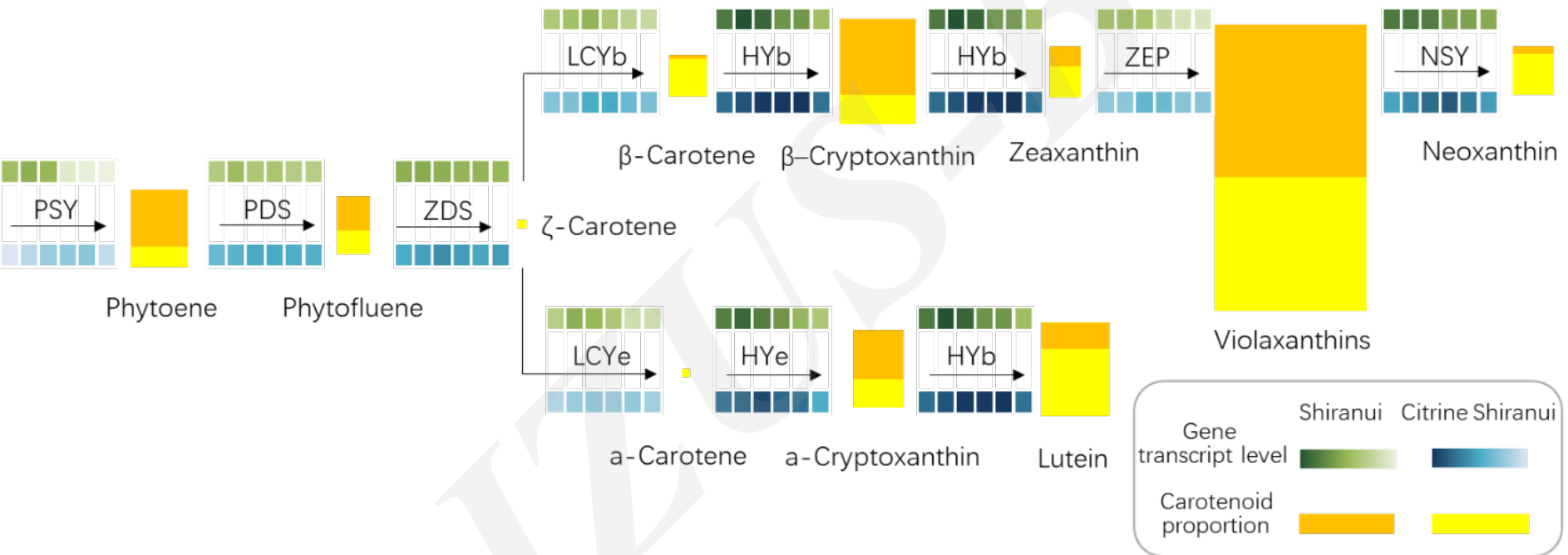


Lower  $\beta$ -cryptoxanthin (a carotenoid associated with an orange color)

Higher proportions of lutein and neoxanthin (associated with a green-yellow color)



the additional factors contributing to the brighter color flavedo of Citrine Shiranui



- The *HYb* gene was more highly expressed in both cultivars → In accord with its multiple hydroxylation functions.

- The higher transcript levels of *PSY* in the early stages of fruit ripening in the flavedo of Shiranui → Provide abundant substrate to sustain higher total carotenoid content.

- The low transcript levels of *ZEP* → probably imply potential negative feedback regulation.