

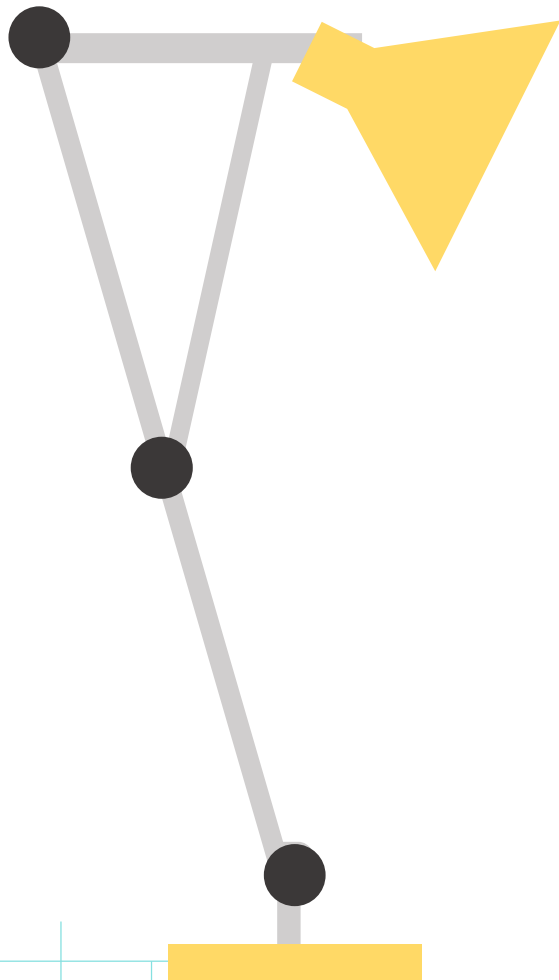


Application of interim PET-CT in first-line treatment decision-making for lymphoma

Keywords: Positron-emission computed-tomography; lymphoma; interim-PET adapted therapy

Cite this as: Linlin HUANG, Yi ZHAO, Jingsong HE. Application of interim PET-CT in first-line treatment decision-making for lymphoma[J]. Journal of Zhejiang University Science B, 2023, 24(10): 905-921.
<http://doi.org/10.1631/jzus.B2200644>

Figure and table



01

Table 1 and figure 1 summarize therapies based on iPET in early HL

02

Table 2 and figure 2 summarize therapies based on iPET in advanced HL

03

Table 3 and figure 3 summarize therapies based on iPET in NHL

Summary



➤ we summarize previous iPET-adapted treatment regimens for lymphoma and provide a foundation for the clinical implementation of iPET-adapted first-line treatment strategies.

➤ Compared with HL, iPET-adapted treatments for NHL are still in the exploratory phase.

➤ By optimizing the treatment process, standardizing the evaluation method, combining other prognostic indicators, iPET will have a broad space for development in the evaluation and treatment of diseases.