

Cite this as: Chao SONG, Ting HAN, Lifei HU, Ning SHAO, Zepeng WANG, Yan JIN, Tingting CHEN, Zhiwei ZHU, 2024. Early developmental levels of children with autism spectrum disorder with different adaptive behaviors: a retrospective analysis. *Journal of Zhejiang University-Science B (Biomedicine & Biotechnology)*, 25(11):1031-1038. <https://doi.org/10.1631/jzus.B2300310>

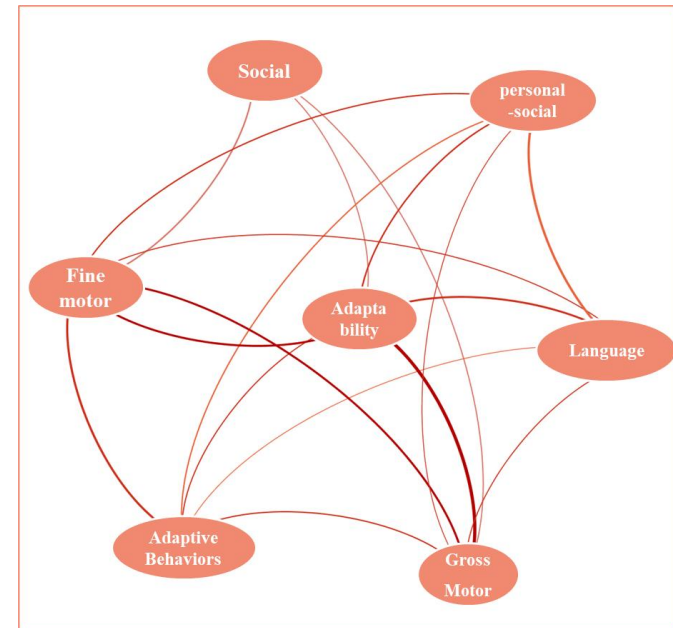
Early developmental levels of children with autism spectrum disorder with different adaptive behaviors: a retrospective analysis

Key words: Autism spectrum disorder; Child; Adaptive behavior; Early developmental level; Individualized intervention

Research summary

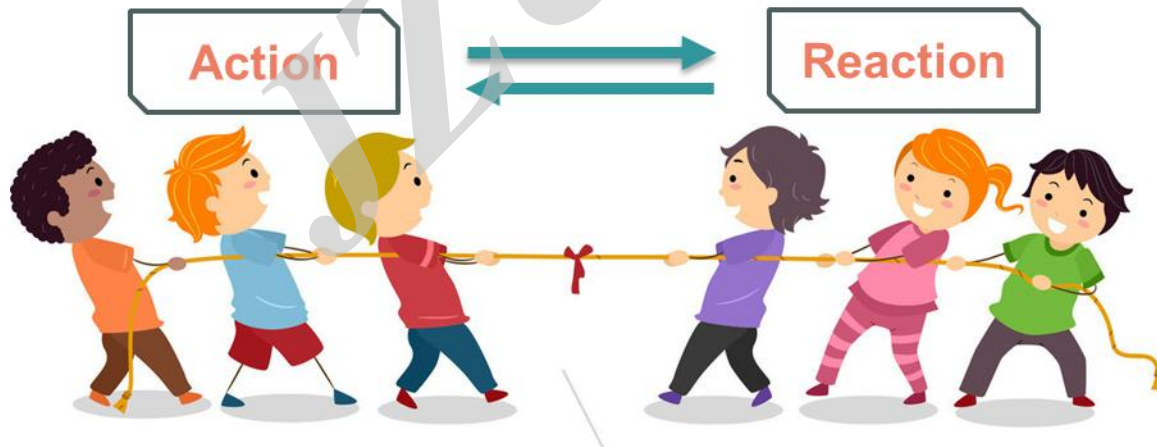
This paper focuses on the relationship between adaptive behavioral skills and early developmental levels in children with autism spectrum disorders (ASD). The paper contains the following main sections:

- Adaptive behavioral skills in children with ASD
- Early developmental levels of children with ASD
- The impact of age and gender on the development of children with ASD



Innovation points

- **Explores** how to promote autism awareness and culture on Autism Awareness Day.
- **Supporting** autism with services, inclusion, and advocacy.
- **Not** normalizing mean DQs in the adaptive, gross motor, fine motor, language, and personal social activities domains was a feature of the early development of children with ASD.



Innovation points

The following tables contain the early developmental levels of children with autism spectrum disorders who have different adaptive behaviors

Table 1 | Development levels and influencing factors of different GDS domains in children with ASD.

Table 2 | Adaptive function and influencing factors of children with ASD.

Table 3 | The influence of age and adaptive function on different developmental domains of children with ASD.

Table 4 | Correlation matrix of developmental levels and factors influencing different developmental domains.