

***Cite this as:*** Jinmin CHEN, Yuanqiang LU. Early albumin infusion and mortality in elderly patients with sepsis based on analysis of the Medical Information Mart for Intensive Care-IV (MIMIC-IV) database. *Journal of Zhejiang University-SCIENCE B*, 2026, 27(4): 390-401. <https://doi.org/10.1631/jzus.B2400268>

# **Early albumin infusion and mortality in elderly patients with sepsis based on analysis of the Medical Information Mart for Intensive Care-IV (MIMIC-IV) database**

**Key words:** Sepsis; Albumin; Hypoalbuminemia; Mortality; Propensity score matching (PSM)

# ***Research Summary***

**This study primarily focused on the impact of early albumin infusion on the prognosis of elderly patients diagnosed with sepsis in the intensive care unit (ICU). The core findings and key roles of early albumin infusion in this context were summarized in the following aspects:**

- Early hypoalbuminemia in elderly ICU patients with sepsis was strongly associated with an increased risk of adverse clinical outcomes**
- Early albumin infusion in elderly ICU patients with sepsis and hypoalbuminemia was associated with improved prognosis.**

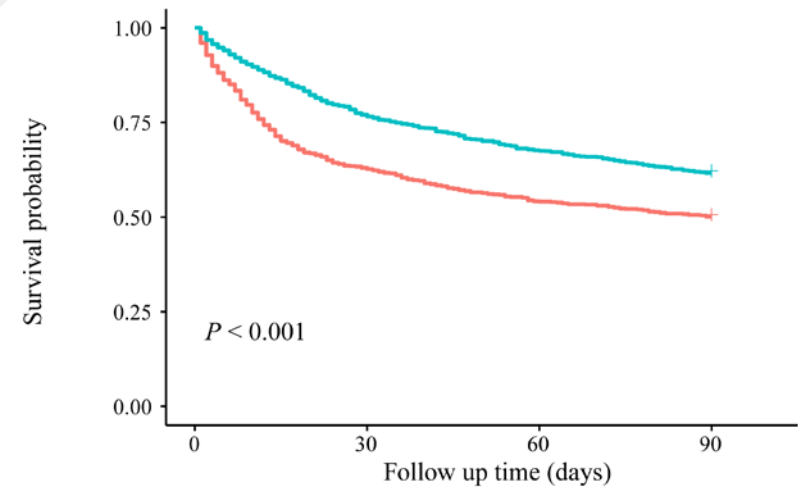
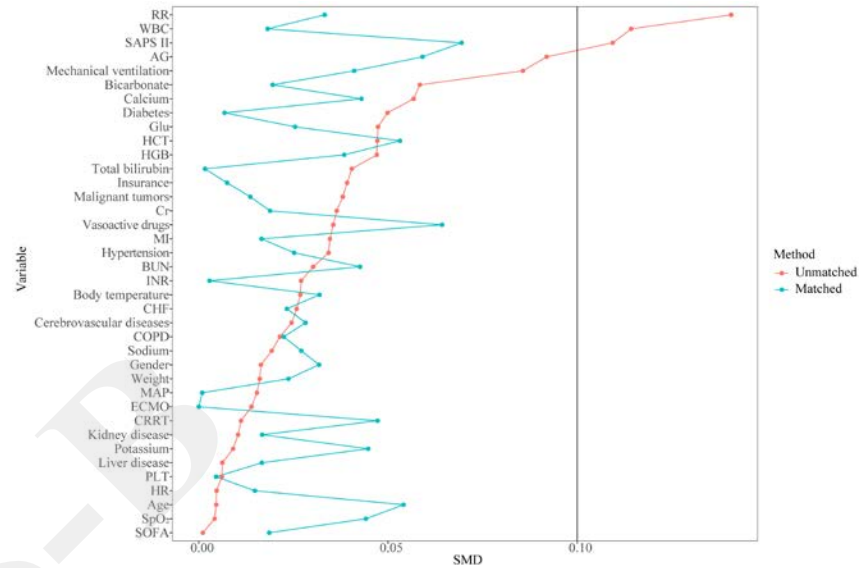
# Innovation points

- **Exploration of Early Albumin Infusion in Elderly Sepsis Patients.**

- **Use of Propensity Score Matching (PSM) to Minimize Bias.**

- **Clear Demonstration of Early Hypoalbuminemia's Impact on Mortality.**

- **Identification of Clinical Implications for Early Albumin Infusion.**



	Number at risk			
	0	30	60	90
Control group	884	557	479	443
Early albumin infusion group	884	681	598	545