

Cite this as: Jingxin JIANG, Weiwei PAN, Liyang SUN, Liwei PANG, Hailang CHEN, Jian HUANG, Wuzhen CHEN, 2026. Real-world data and evidence: pioneering frontiers in precision oncology. *Journal of Zhejiang University-SCIENCE B*, 27(1):44-57. <https://doi.org/10.1631/jzus.B2400285>

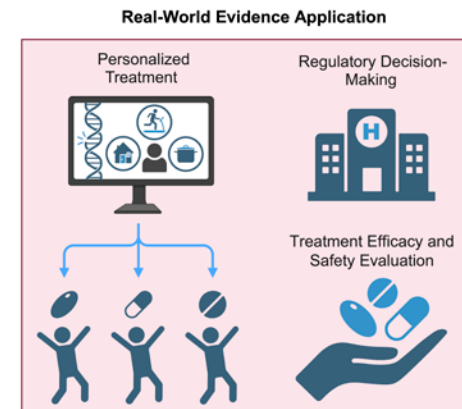
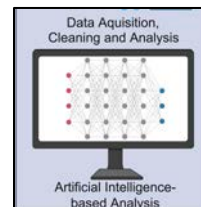
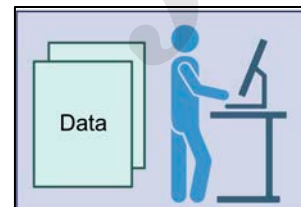
Real-world data and evidence: pioneering frontiers in precision oncology

Key words: Real-world study (RWS); Precision oncology; Real-world data (RWD); Study design; Data characterization

Research Summary

This review mainly focused on the evolving landscape of RWSs in oncology and their impact on precision medicine. We provided a comprehensive analysis in the following aspects:

- Process of RWSs leveraging diverse data sources to generate evidence
- Key contributions of RWSs in precision oncology research
- Design essentials for real-world studies
- Application of AI in RWD analysis
- Significant challenges and advancements



Innovation points

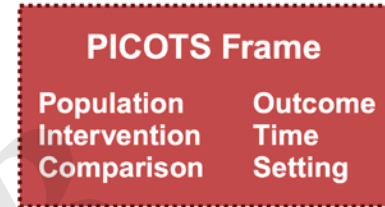
- The **CHARACTERISTICS** of RWSs compared with RCTs

Table 1 Characteristics of Real-World Studies (RWSs) and Randomized Controlled Trials (RCTs)

Characteristic	RWSs	RCTs
Study Design	Observational studies using routine clinical data; multiple design options	Controlled experiments with randomization; standardized protocols
Population	Broad, diverse patient populations; including complex cases	Selected participants meeting strict criteria; excluding comorbidities
Data Quality	Variable quality; potential bias and confounding	High quality; minimized bias through randomization
Outcomes	Long-term effectiveness; patient-reported outcomes; real-world safety	Specific endpoints; efficacy under ideal conditions; short-term focus
Implementation	Cost-effective; faster recruitment; applying existing data	Resource-intensive; lengthy recruitment; complex logistics
Strengths	Real-world applicability; population representativeness; long-term insights	Strong causal inference; internal validity; standardized evidence
Limitations	Data quality concerns; bias control challenges; privacy issues	Limited generalizability; high cost; artificial setting
Regulatory Role	Complementary evidence; growing acceptance	Primary evidence; established standard

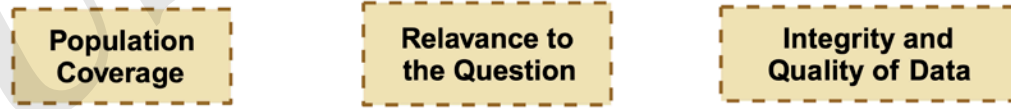
Innovation points

STEP1: Articulating Research Question



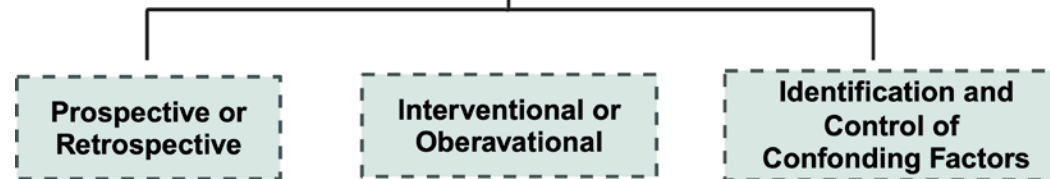
STEP2:

Choose Appropriate Data Source



STEP3:

Research Design



Real-World Study

Figure 2

•The essentials to design RWSs.