



# Developing antibodies from cholinesterase derived from prokaryotic expression and testing their feasibility for detecting immunogen content in *Daphnia magna*\*

Hong-cui LIU<sup>1</sup>, Bing-qiang YUAN<sup>2</sup>, Shao-nan LI<sup>†‡1</sup>

(<sup>1</sup>Institute of Pesticide and Environmental Toxicology, Zhejiang University, Hangzhou 310029, China)

(<sup>2</sup>Institute of Technology Innovation, Zhejiang University, Hangzhou 310007, China)

<sup>†</sup>E-mail: snli@zju.edu.cn

Received Jan. 8, 2015; Revision accepted July 6, 2015; Crosschecked Jan. 6, 2016

**Abstract:** To yield cholinesterase (ChE) from prokaryotic expression, the *ChE* gene that belongs to *Daphnia magna* was amplified by reverse transcription-polymerase chain reaction (RT-PCR) using forward primer 5'-CCCYGGNGCSAT GATGTG-3' and reverse primer 5'-GYAAGTTRGCCCAATATCT-3'. To express the gene, one sequence of the amplified DNA, which was able to encode a putative protein containing two conserved carboxylesterase domains, was connected to the prokaryotic expression vector PET-29a(+). The recombinant vector was transformed into *Escherichia coli* BL21 (DE3). Protein expression was induced by isopropyl- $\beta$ -D-thiogalactoside. The expressed ChE was used as an immunogen to immunize BALB/c mice. The obtained antibodies were tested for their specificity towards crude enzymes from species such as *Alona milleri*, *Macrobrachium nipponense*, *Bombyx mori*, *Chironomus kiiensis*, *Apis mellifera*, *Eisenia foetida*, *Brachydanio rerio*, and *Xenopus laevis*. Results indicated that the antibodies had specificity suitable for detecting ChE in *Daphnia magna*. A type of indirect and non-competitive enzyme-linked immunosorbent assay (IN-ELISA) was used to test the immunoreactive content of ChE (ChE-IR) in *Daphnia magna*. The detection limit of the IN-ELISA was found to be 14.5 ng/ml at an antiserum dilution of 1:22000. Results from tests on *Daphnia magna* exposed to sublethal concentrations of triazophos indicated a maximal induction of 57.2% in terms of ChE-IR on the second day after the animals were exposed to a concentration of 2.10  $\mu$ g/L triazophos. Testing on animals acclimatized to a temperature of 16 °C indicated that ChE-IR was induced by 16.9% compared with the ChE-IR content detected at 21 °C, and the rate of induction was 25.6% at 10 °C. The IN-ELISA was also used to test the stability of ChE-IR in collected samples. Repeated freezing and thawing had no influence on the outcome of the test. All these results suggest that the polyclonal antibodies developed against the recombinant ChE are as efficient as those developed against the native ChE in detecting ChE content in *Daphnia magna*.

**Key words:** *Daphnia magna*, Cholinesterase (ChE), Polymerase chain reaction (PCR), Recombinant protein ChE, Enzyme-linked immunosorbent assay (ELISA), Triazophos  
<http://dx.doi.org/10.1631/jzus.B1500008> **CLC number:** S482.3<sup>+3</sup>

## 1 Introduction

Cholinesterases (ChEs) are a group of serine hydrolases that are liable to be inhibited, either in vivo or in vitro, by anticholinesterases such as or-

ganophosphates (OPs) and carbamates (CBs) (Villatte and Bachmann, 2002; Hackenberger *et al.*, 2008). This extraordinary characteristic makes it possible to use them to predict field existence and stress induced by these chemicals (Sanchez-Hernandez *et al.*, 1998; Stien *et al.*, 1998; Cajaraville *et al.*, 2000; den Besten *et al.*, 2001; Abdel-Halim *et al.*, 2006; Denoyelle *et al.*, 2007; Sáenz *et al.*, 2010; van Oosterom *et al.*, 2010; Printes *et al.*, 2011). To this end, the “normal” activity of ChE should first be confirmed.

<sup>‡</sup> Corresponding author

\* Project supported by the Zhejiang Provincial Natural Science Foundation (No. LY12B07008), China

ORCID: Hong-cui LIU, <http://orcid.org/0000-0002-3531-6246>; Shao-nan LI, <http://orcid.org/0000-0001-8158-7891>

© Zhejiang University and Springer-Verlag Berlin Heidelberg 2016

It is known that in vivo activity of ChE is affected by inherent factors, such as age, genotype, circadian rhythms, sex, and nutritional status. External factors such as food supply, ambient temperature, and water quality can also alter in vivo activity of the enzyme (Hill, 1989; Sturm *et al.*, 1999; Phillips *et al.*, 2002; Xuereb *et al.*, 2007; Garabrant *et al.*, 2009). These factors impair determination of the “normal” activity of ChE and thus hinder identification of “abnormal” activity, including that caused by anticholinesterases.

“Normal” activity is a feature that is determined by the molecular structure of the enzyme. Neither the inherent nor the external factors can change activity without altering the content of the enzyme in the body. To ascertain the “normal” activity of ChE in samples, a technique is required that is capable of quantifying the content of the enzyme. Due to its quick, sensitive, and cost-effective nature, an immunoassay, such as enzyme-linked immunosorbent assay (ELISA), is well suited for fulfilling this task (Khattab *et al.*, 1994; Li *et al.*, 2005; Khattab and Ali, 2007).

*Daphnia magna* is a species of zooplankton that belongs to the phylum Arthropoda, Class Crustacea, Order Cladocera, and Family Daphniidae. It consumes algae and other small phytoplanktons and in turn acts as prey for freshwater fish and large aquatic invertebrates. Due to its worldwide distribution and the importance of the species in maintaining the sustainability of aquatic ecosystems, the animal has long been noted for its responses in terms of ChE during anticholinesterase exposure (Gälli *et al.*, 1994; Guilhermino *et al.*, 1996; Sturm and Hansen, 1999; Barata *et al.*, 2001; Carvalho *et al.*, 2003; Duquesne, 2006; Vesela *et al.*, 2006; Damásio *et al.*, 2007; Jemec *et al.*, 2007; Printes *et al.*, 2008; Duquesne and Küster, 2010; Coelho *et al.*, 2011; Li and Tan, 2011).

For better utilization of the species in predicting field exposure to OPs and CBs, a batch of polyclonal antibodies has been produced by immunizing mice with a type of ChE separated from whole bodies of *Daphnia magna* (Liu *et al.*, 2012a). The procedure proved to be laborious and inefficient, and had low throughput, and both the quality and quantity of the antibodies were limited by the status of the population from which the immunogens (i.e. *Daphnia magna* ChEs) were separated. A more effective method for producing the immunogen is therefore needed.

The development of molecular biology makes it possible to produce the immunogen within strains of bacteria or fungi. To do so, the *ChE* gene should be amplified and then expressed. The aim of this study was to produce polyclonal antibodies against the recombinant protein ChE of *Daphnia magna*, to determine characteristics of the antibodies, and to explore the efficiency of the antibodies in utilization.

According to published information, no type of *ChE* gene has been amplified from species that belong to the Class Crustacea. However, several types of *ChE* have been amplified from insects such as *Aedes aegypti* (Anthony *et al.*, 1995), *Aphis gossypii* (Li and Han, 2002), *Plutella xylostella* (Ni *et al.*, 2003), *Pseudophacopteron canarium* (Lin *et al.*, 2007), *Culex pipiens* (Li *et al.*, 2007), *Drosophila melanogaster* (Zhang, 2008), and *Anopheles gambiae* (Jiang *et al.*, 2009). Among these, some have been expressed in strains of bacteria or fungi (Anthony *et al.*, 1995; Li *et al.*, 2007; Zhang, 2008; Jiang *et al.*, 2009). The results of these studies were helpful for designing primers and selecting vectors and hosts in the present study.

## 2 Materials and methods

### 2.1 Reagents

Host bacteria, *Escherichia coli* BL21 (DE3) and *E. coli* DH5 $\alpha$ , were donated by the Institute of Biotechnology, Zhejiang University, China. The pMD19-T vector, PET-29a(+) plasmid, Expand High Fidelity PCR system, HisTALON™ Gravity Columns Purification Kit, DNA Recovery Kit, and all of the restriction enzymes were purchased from TaKaRa (Dalian, China). Horseradish peroxidase (HRP)-labelled goat anti-mouse immunoglobulin G (IgG), Coomassie Brilliant Blue G-250, acetylthiocholine iodide, propionylthiocholine iodide, Freund's complete adjuvant, Freund's incomplete adjuvant, and bovine serum albumin (BSA, with a molecular weight (MW) of 67000) were purchased from Sigma-Aldrich (Steinheim, Germany). Tramethylbenzidine (TMB), which consists of solutions A and B, was purchased from the Yingchuang Company (Huzhou, China). TRIzol Kit and Amplex Red Acetylcholine/Acetylcholinesterase Assay Kit (A12217) (which contains Amplex Red reagent, dimethyl sulfoxide, HRP, hydrogen peroxide, and choline oxidase originating from *Alcaligenes* sp.,

etc.) were bought from Invitrogen (Eugene, Oregon, USA). Defatted milk was purchased from the Shanghai Chemical Reagents Company (Shanghai, China). All other chemicals were sourced domestically and were of analytical grade, unless otherwise stated.

## 2.2 *Daphnia magna*

The organisms employed in this study were obtained from the Chinese Center for Disease Control and Prevention (Beijing, China) and belong to breed 62 of *Daphnia magna* (DM). The breed was maintained in M<sub>4</sub> medium (Elendt and Bias, 1990) and fed with unicellular algae *Scenedesmus subspicatus*. The following settings were maintained: water temperature (22±1) °C, pH 7.8±0.2, light intensity 1500–2500 lx, and a light cycle of 16 h light to 8 h dark.

## 2.3 RNA isolation, cDNA synthesis, and PCR

About 1 g of *Daphnia magna* was used as a sample for total RNA isolation. The *Daphnia magna* was ground in liquid nitrogen. The ground sample was stored at –80 °C until used. Isolation was performed using the TRIzol Kit according to the manufacturer's instructions. The quality of the isolation was assessed at 260 and 280 nm by NanoDrop ND1000 (Thermo Fisher Scientific, Waltham, MA, USA). Agarose electrophoresis, using Nucleic Acid Horizontal Electrophoresis Units (Bio-Rad Inc., USA), was carried out to visualize the integrity of the isolated RNA. The gel was stained with ethidium bromide (EB) and displayed using a gel-imaging analysis system Tanon-2500 (Tanneng Co. Ltd., Shanghai, China).

First strand complementary DNA (cDNA) was synthesized from 1 µg of total RNA. One microliter of oligo(dT)<sub>15</sub> and 1 µl of diethyl phosphorocyanidate (DEPC) water were added to 4 µl of RNA. After 5 min incubation at 70 °C, the mixture was placed on ice and 2 µl 5× buffer, 1 µl (200 U) ribonuclease inhibitor, and 1 µl of 10 mmol/L 2'-deoxynucleoside 5'-triphosphate (dNTP) mixture were added. After another 70 °C incubation for 10 min, 1 µl (200 U) RevertAid™ H Minus M-MuLV reverse transcriptase was added and the mixture was incubated at 42 °C for 60 min. The cDNA obtained was stored at –20 °C until used for polymerase chain reaction (PCR).

The *ChE* gene was amplified to take 5'-CCCYG GNGCSATGATGTG-3' and 5'-GYAAGTTRGCCCA ATATCT-3' as forward and reverse primers, respectively. One microliter of forward primer (10 mmol/L),

1 µl reverse primer (10 mmol/L), 2 µl dNTP mixture (2.5 mmol/L), 2.5 µl 10× Ex Taq buffer, 0.125 µl TaKaRa Ex Taq DNA polymerase, and 17.125 µl double-distilled water (ddH<sub>2</sub>O) were added to 1.25 µl cDNA. The total volume was 25 µl. The amplification started with 2 min pre-denaturation at 94 °C, followed by 33 cycles of 45 s denaturation at 94 °C, 40 s annealing at 52 °C, and 30 s extension at 72 °C, and the protocol was terminated after 10 min more of extension at 72 °C. The above procedure was completed using PTC-200 (Bio-Rad Inc., USA). The PCR products were analyzed by agarose electrophoresis. The isolates were stained with EB. To obtain purified DNA, the gel was cut and treated using a DNA Recovery Kit.

## 2.4 Gene transformation and sequence analysis

For connecting the amplified DNA to the vector pMD19-T, 4.5 µl purified DNA was mixed with 0.5 µl pMD19-T and 5.0 µl Solution I. The mixture was incubated at 16 °C for 3 h to finish the connection. The 10 µl of connected vector was spiked into 100 µl of competent cells of *E. coli* DH5α. The cell suspension was kept at 42 °C for 90 s and then kept on cold ice for at least 10 min to finish the transfection. To revive the cells to express the inserted *ChE* gene, the cell suspension was incubated in LB liquid medium for 1 h at 37 °C. To verify the transfection, the cell suspension was inoculated on an LB plate medium that contained 100 µg/ml ampicillin and incubated overnight at 37 °C. The untransfected cells of *E. coli* DH5α were incubated in the same way to serve as negative controls. Colonies appearing on the plate were collected and incubated for 6–8 h in LB liquid medium at 37 °C. The cell suspension was collected and used as a template to carry out PCR. Agarose electrophoresis of the PCR products was carried out to visualize the result, and the isolates were stained with EB.

Cells that were confirmed by PCR to be transfected were sent to Sangon Biotech for gene sequence analysis. The results and the deduced amino acid sequences were compared using the National Center for Biotechnology Information (NCBI) BLAST network sources (<http://www.ncbi.nlm.nih.gov/BLAST>).

## 2.5 Generation of expression vectors and expression of ChE protein

To start protein expression, gene amplification was performed using the forward primer 5'-CCGA

ATTCCCCYGGNGCSATGATGTG-3' that contains restriction site *EcoRI*, and the reverse primer 5'-GC GTCGACGYAAGTTRGCCCAATATCT-3' that contains restriction site *SaII*. The PCR products were digested with the restriction endonucleases *EcoRI* and *SaII* and then ligated into the plasmid pET-29a(+) that was digested with the same enzymes. The recombinant plasmid pET-29a(+)-*ChE* was transfected into competent *E. coli* BL21 (DE3). To confirm the transfection, the recombinant plasmids were separated from the cells and digested with the above-mentioned restriction endonucleases. Meanwhile, the cell suspension was used as a template to carry out PCR. Agarose electrophoresis was performed to visualize the results of the PCR and enzyme digestion, and the isolates were stained with EB.

Clones of *E. coli* BL21 (DE3) with the correct transformation were cultured at 37 °C in LB liquid medium containing 50 µg/ml kanamycin to achieve log phase growth of the bacteria. Isopropyl-D-thiogalactoside (IPTG) was added, at a final concentration of 0.2 mmol/L, to induce protein expression in condition in which the optical density at 600 nm (OD<sub>600</sub>) of the culture reached a value of 0.5–0.6. After 4 h induction, the culture was centrifuged for 15 min at 10000g at 4 °C. Sodium dodecyl sulfate polyacrylamide gel electrophoresis (SDS-PAGE) was performed to visualize the expression, and the isolates were stained with Coomassie Brilliant Blue G-250.

## 2.6 Purification and renaturation of recombinant protein ChE

Clones with the correct transformation were cultured on a large scale using the procedure described above. The cells were harvested by centrifugation for 20 min at 8000g at 4 °C and resuspended in 6 ml cold HisTALON×Tractor buffer. After being spiked with 3 µl of nuclease, the resuspended cells were lysed on ice by sonication (200 W, 99 cycles of 3 s working and 5 s rest) and centrifuged for 20 min at 8000g at 4 °C. The supernatant was used as the source of the recombinant ChE.

The supernatants were batch-purified by nickel-nitrilotriacetate (Ni-NTA) affinity chromatography according to the manufacturer's instructions. Briefly, a 50% slurry of Ni-NTA was added at a ratio of 1:4 (v/v) to the supernatant and mixed gently by shaking for 60 min at room temperature. The mixture

was carefully loaded into an empty column of 20 cm×1.2 cm. The column was washed with ten volumes of washing buffer and then eluted with five volumes of elution buffer. The eluent was added drop-by-drop to refolding buffer (0.1 mol/L Tris/HCl, 1.5 mmol/L reduced glutathione, 0.3 mmol/L oxidized glutathione, 0.35 mol/L guanidinium chloride, and 0.5 mol/L L-arginine, pH 8.0) with stirring, and then stored at 4 °C for 24 h to ensure adequate renaturation. Finally, the solution of the refolded recombinant protein was concentrated by ultrafiltration (Minitan ultrafiltration membrane with normal molecular weight limit (NMWL): 20000; Millipore Corp., Bedford, MA, USA). At each purification step, the recombinant protein was assessed by SDS-PAGE, accompanied by staining with Coomassie Brilliant Blue G-250.

## 2.7 ChE activity measurement

Total activity of the recombinant protein was measured by a relatively sensitive method developed by Zhou *et al.* (2000). The protocol was in accord with that described by Liu *et al.* (2012a) and Yang *et al.* (2013). Acetylthiocholine iodide and propionylthiocholine iodide were used as substrates in this protocol. The protein content of the samples was determined by the method of Bradford (1976) using BSA as the reference.

## 2.8 Production of polyclonal antibodies against the recombinant protein ChE

### 2.8.1 Immunization of BALB/c mice

Two individuals of the BALB/c mice (7 weeks old) were immunized subcutaneously with the refolded recombinant protein ChE (Section 2.6) mixed with an equal volume of Freund's complete adjuvant. The mice were booster-immunized with the protein once every two weeks. At the same time, another two mice that were immunized with phosphate buffered saline (PBS) were used as negative controls and another that was not immunized was taken as a blank control. Blood was collected 7 d after the last immunization, clarified by 3–4 h incubation at 4 °C, and centrifuged for 15 min at 3000g. The supernatant was collected as antiserum and stored at –20 °C.

### 2.8.2 Determination of titer of antiserum

A type of indirect and non-competitive ELISA was carried out to detect titers of the antiserum (Liu

et al., 2012b). To start the procedure, the microplate was coated with 10 µg/ml of recombinant protein ChE (dissolved in 50 mmol/L carbonate-bicarbonate buffer, pH 9.6) by overnight incubation at 4 °C. The plate was washed three times with PBST (i.e. 10 mmol/L PBS containing 0.05% Tween 20, pH 7.4) and then blocked by 0.5 h incubation with 2% (0.02 g/ml) skim milk in PBS (300 µl/well) at 37 °C. After another step of washing, antiserum of various dilutions (1:16000, 1:18000, 1:20000, 1:22000, 1:24000, 1:26000, 1:28000, and 1:30000) that was diluted with PBST was added (100 µl/well). After 1 h incubation at 37 °C, the plate was washed and 100 µl of diluted (1:5000) goat anti-mouse IgG-HRP was added. After another 1 h incubation at 37 °C, the plate was washed and 100 µl TMB solution (i.e. a mixture of 400 µl 0.6% (6 mg/g) TMB dissolved with dimethyl sulfoxide (DMSO) and 100 µl 1% (0.01 g/ml) H<sub>2</sub>O<sub>2</sub> with 25 ml citrate-acetate buffer of pH 5.5) was added to activate the peroxidase reaction. The reaction lasted for 30 min and was stopped by adding 50 µl 2 mol/L H<sub>2</sub>SO<sub>4</sub>. The optical absorbance was measured at 450 nm (OD<sub>450</sub>) by a Model 680 microplate reader (Bio-Rad Inc., Hercules, CA, USA). The titer of the antiserum was determined as the dilution that gave an OD<sub>450</sub> closest to the value of 1.0.

### 2.8.3 Determination of cross-reactivity

Species such as *Daphnia magna*, *Alona milleri*, *Macrobrachium nipponense*, *Bombyx mori*, *Chironomus kiiensis*, *Apis mellifera*, *Brachydanio rerio*, *Eisenia foetida*, and *Xenopus laevis* were employed as test species to prepare crude enzymes (antigens). Samples of *Alona milleri* and *Chironomus kiiensis* were collected from a pond within Huajiachi Campus, Zhejiang University, Hangzhou, Zhejiang Province, China. The *Macrobrachium nipponense* were purchased as sexually mature adults (>50 d) from the Hangzhou Dayang Aquaculture Company, Zhejiang Province. The *Bombyx mori* (variety Qiufeng×Baiyu) were purchased as diapaused eggs from the Silkworm Egg Production Company, Hangzhou, Zhejiang Province. The *Apis mellifera* were purchased as a queen colony from a beekeeper in Deqing, Zhejiang Province. The *Brachydanio rerio* (Tuebingen breed) were purchased as adults (≥60 d) from the China Zebrafish Resource Centre, Wuhan, Hubei Province. The *Eisenia foetida* (Taiping-2 breed) were purchased

from an earthworm culturist in Jinhua, Zhejiang Province. Adult *Xenopus laevis* were kindly donated by the Guangzhou Institute of Biomedicine and Health, Chinese Academy of Sciences, Guangdong Province, China.

The *Daphnia magna* and *Alona milleri* were raised in the same conditions, as described in Section 2.2. Sexually mature adults were employed as specimens. The *Chironomus kiiensis* and *Xenopus laevis* were bred in tap water. Individuals of both species were raised from eggs. For *Chironomus kiiensis*, the larvae of the 4th instar were used, and for *Xenopus laevis*, tadpoles of stages 51–56. The eggs of *Bombyx mori* were induced to hatch before use. The larvae were fed with mulberry leaf. Those at the beginning of the 2nd instar were used as specimens. The bee colony was placed in a field and the worker bees were collected just before being used. The *Eisenia foetida* were raised in garden soil and fed with cow manure. Adults about 60 d old (with clitellum) were used as specimens. The adults obtained of *Macrobrachium nipponense* and *Brachydanio rerio* were temporarily raised in tap water and fed with commercial fish food for at least 7 d before being used.

In a proportion of 1:5 (w:v), the whole bodies (or tissues) of the animals were homogenized in ice-cold buffer containing 0.25% (2.5 g/L) Triton X-100, 1 mmol/L ethylenediaminetetraacetic acid (EDTA), and 50 mmol/L Tris (pH 7.5). After 30 min centrifugation at 10000g and at 4 °C, the supernatant was collected as crude enzyme. The protein content of the crude enzyme was measured using the method of Bradford (1976).

Serially diluted antiserum was allowed to react with crude enzymes according to the procedure described in Section 2.8.2 to determine the titers of the antiserum for different species. Before the test, the crude enzymes were diluted to a concentration of 4.7 mg protein/ml and the antiserum was diluted in series to ensure that optical absorbance close to the value of 1.0 could be obtained. The cross-reactivity of the antiserum was expressed as the ratio of the titer of the antiserum for *Daphnia magna* to that of the test species.

The ChE activity of the crude enzymes was determined using propionylthiocholine iodide as substrate by the method described by Liu et al. (2012a) and Yang et al. (2013).

## 2.9 Development of ELISA

### 2.9.1 To determine optimal dilutions of antiserum

To investigate the optimal dilutions of antiserum for the ELISA, serially diluted antiserum (1:18000, 1:20000, 1:22000, 1:24000, 1:26000, and 1:28000) was used to react with recombinant protein ChE at 0.3, 0.6, 1.2, 2.5, 5.0, 7.0, 9.6, 15.0, and 20.0  $\mu\text{g/ml}$ , respectively, according to the procedure described in Section 2.8.2. The optimal dilution of antiserum against a certain level of antigen was determined as the titer.

### 2.9.2 To establish a standard curve for determination of immunoreactive content of ChE (ChE-IR)

Recombinant protein ChE at various concentrations was allowed to react with antiserum according to the procedure described in Section 2.8.2. Dilution of the antiserum was in accordance with results of the experiment performed in Section 2.9.1.

The concentration of recombinant ChE was taken as the independent variable ( $x$ ) and the measured  $\text{OD}_{450}$  as the dependent variable ( $y$ ) to establish the standard curve of  $y=a(1-e^{-bx})$  by CurveExpert 1.3 following the route of “apply fit-user model...”.

### 2.9.3 To determine the detection limit of ELISA

Samples that contained no recombinant protein ChE were used to react with antiserum according to the procedure described in Section 2.8.2. Dilution of the antiserum was the same as that adopted in Section 2.9.1. The values at  $\text{OD}_{450}$  were used to calculate the average ( $\bar{A}$ ) and the standard deviation ( $S$ ). The test limit ( $x_{\min}$ ) was calculated using the formula  $x_{\min}=\bar{A}-2S$  (Yang *et al.*, 1998). The standard curve, as established in Section 2.9.2, was taken to simulate the detection limit ( $y_{\min}$ ) of ELISA.

### 2.9.4 To determine the precision of ELISA

To determine the precision (i.e. repeatability) of the ELISA, different concentrations of recombinant protein ChE (1, 2, 4, 6, 8, and 10  $\mu\text{g/ml}$ ) were used to react with antiserum according to the procedure described in Section 2.8.2. Each concentration was spiked in 3 batches, each consisting of 15 replicates. Dilution of the antiserum was the same as that used in Section 2.9.2.

## 2.10 Applicability of the antiserum

### 2.10.1 Detecting ChE-IR in *Daphnia magna* exposed to sublethal concentrations of triazophos

Concentrations of triazophos of 0.06, 0.35, and 2.10  $\mu\text{g/L}$  were used, corresponding to 1/216, 1/36, and 1/6 half maximal effective concentration ( $\text{EC}_{50}$ ) of the insecticide, respectively (Liu *et al.*, 2012a). The insecticide was spiked as a working solution of acetone. The final concentration of the acetone in dilutions (including the control) was set at 13  $\mu\text{g/L}$ . The *Daphnia magna* were raised in 500-ml beakers that each contained 400 ml of a given triazophos dilution. Ten beakers were used for each of the concentrations (including the control). To start the exposure, 100 *Daphnia magna* of 7 to 14 d old were introduced to each beaker. The exposure lasted 21 d. Specimens were collected on the 2nd, 6th, 10th, 14th, 18th, and 21st days.

The collected specimens were used to prepare the crude enzymes at 4.7 mg protein/ml according to the protocol described in Section 2.8.3. The content of ChE in the crude enzyme was determined according to the protocol described in Section 2.8.2. The dilution of the antiserum was the same as that adopted in Section 2.9.2.

### 2.10.2 Detecting ChE-IR in *Daphnia magna* acclimatized to different water temperatures

*Daphnia magna* 7 to 14 d old were acclimatized to water temperatures of 10, 16, or 21  $^{\circ}\text{C}$  for 21 d. Specimens were collected at the end of the acclimatization. The collected specimens were used to prepare crude enzymes at 4.7 mg protein/ml according to the protocol described in Section 2.8.3. The content of ChE in the crude enzymes was determined using the protocol described in Section 2.8.2. Dilution of the antiserum was the same as that used in Section 2.9.2.

### 2.10.3 Detecting the impact of repeated freeze-and-thaw on ChE-IR levels in collected samples

*Daphnia magna* were collected from a population acclimatized to a water temperature of 21  $^{\circ}\text{C}$ . After collection, the specimens were subjected to two treatments, i.e. either six or twelve cycles of sequential freeze-and-thaw. During each cycle the specimens were frozen at  $-80^{\circ}\text{C}$  for 12 h and then thawed at 22.3  $^{\circ}\text{C}$  for 12 h. Specimens that were not subjected to freeze-and-thaw were used as controls.

Crude enzymes at 4.7 mg protein/ml were prepared according to the protocol described in Section 2.8.3. The content of ChE in the crude enzymes was determined according to the protocol described in Section 2.8.2. The dilution of the antiserum was the same as that used in Section 2.9.2.

### 2.11 Statistical analysis

One-way analysis of variance (ANOVA) and the consequent comparisons among treatments were conducted using data processing software DPS<sup>®</sup> following the route of “experimental statistics→ completely randomized design One-way ANOVA→ Duncan method”.

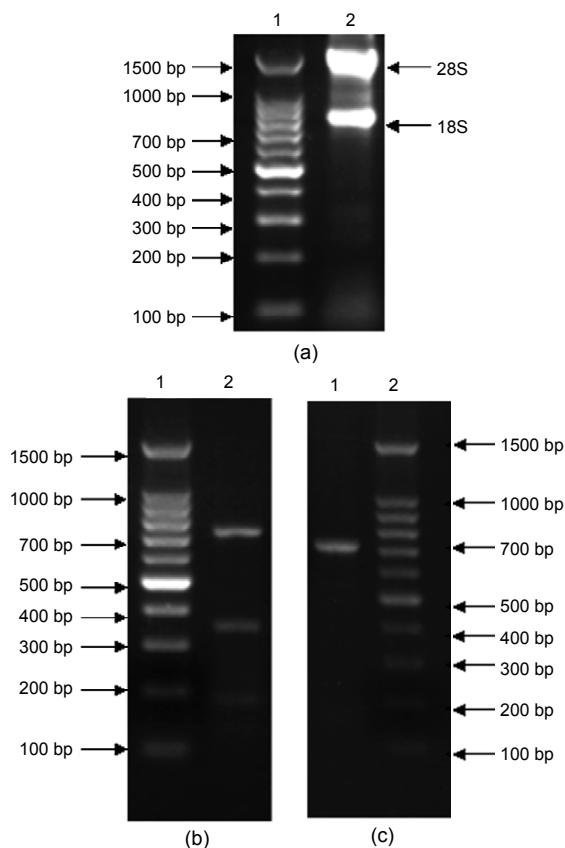
## 3 Results

### 3.1 Sequence of *ChE* gene amplified from *Daphnia magna*

Based on the cDNA of *Daphnia magna*, DNA segments of about 200, 350, and 700 bp were obtained by PCR using 5'-CCCYGGNGCSATGATGTG-3' as forward primer and 5'-GYAAGTTRGCCAATATCT-3' as reverse primer (Fig. 1b). After collection and purification, the segments were connected to pMD19-T and then introduced into *E. coli* DH5 $\alpha$ . The cells with correct transfections were sent for DNA sequence analysis. Results of the analysis indicated a 717-bp (Fig. 1c) nucleotide open reading frame (ORF) that encoded a putative protein consisting of 239 amino acid residues with a calculated molecular mass of 26 kDa. Sequence alignment at amino acid level indicated that the putative protein contained two conserved carboxylesterase domains: characteristic site 2 of carboxylesterase B (EDCLFINIVTP) and serine activity site of carboxylesterase B (FGGNPHNITLFGESAG) (Fig. 2). The DNA segments of about 200 and 350 bp showed low homology with the sequences of *ChE*.

### 3.2 Expression vectors

*ChE* genes were amplified using primers containing the restriction sites *Eco*RI and *Sal*I. The PCR fragment was then inserted into expression vector pET-29a. The expression vector obtained was a band of about 750 bp, identified by PCR amplification using the cell suspension as a template (Fig. 3a).



**Fig. 1 Results of PCR amplification**

(a) Result of RNA isolation. Lane 1: 100 bp DNA ladder; Lane 2: total RNA. (b, c) Result of PCR using cDNA as template. (b) Lane 1: 100 bp DNA ladder; Lane 2: PCR product which indicates gene segments of about 200, 350, and 700 bp. (c) Lane 1: purified PCR product of about 700 bp; Lane 2: 100 bp DNA ladder

Subsequent digestion with *Eco*RI and *Sal*I produced DNA bands of 750 and 2500 bp that represented the target gene and the gene that belonged to the vector, respectively (Fig. 3b). These results indicated that the expression vector pET-29a(+)-*ChE* had been successfully constructed.

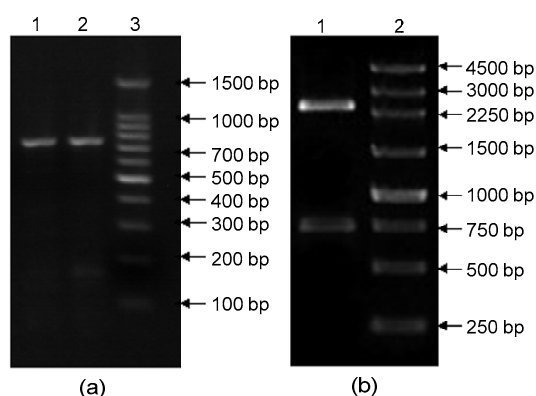
### 3.3 Recombinant protein ChE

Results of SDS-PAGE for the transfected *E. coli* BL21 (DE3) and its inclusion bodies are summarized in Fig. 4. The recombinant protein ChE, which had an expected molecular weight of 26 kDa, appeared as one of the major products in the cell lysates (Fig. 4a). A single band of 26 kDa was obtained after the Ni-NTA affinity chromatography (Section 2.6) (Fig. 4b).

CCT-TGC-AAG-AAG-GCC-CAA-ACA-CTC-GAC-AAA-AAA-CAA-GTA-GAA-GAC-TGT—CIC-TTC-ATT-AAC-ATA-GTA  
P C N A A Q T P N K K Q V E D C L F I N I V  
ACA-CCT-AGG-CCA-CGA-CCC-AAG-AAC-GCT-GCT-GTC-ATG-CTG-TGG-GTC-TTC-GGC-GGT-GGG-ACT-GCT- ACT-  
T P R P R P N N A A V I L W V S G G V T A T  
CTA-GAT-GTT-TAC-GAC-GCA-AAA-CTA-CTC-GTA-TCU-GAA-CAT-AAA-GAA-GTC-TAT-GTT-TCC-ATG-CAA-TAT-AGA  
L N V Y G E K L L V Y E H K E V Y V Y M Q Y R  
GTT-GCC-TCC-CTA-GGT-TTT-CTA-TTC-TTT-GAT-ACT-CCT-GAT-GTA-CCG-AGT-AAT-GCT-GGT-CTT-TTG-GTA-CAG-  
G G S L G F P F F G T P N V P S N G G L L V Q  
CTC-ATG-GCT-TTA-CAA-TGG-GTG-AAA-GAC-AAC-ATA-GCT-TAC TTC-GGT-GGA-AAU-CCG-CAC-AAT- ATA-ACA  
L M N L Q W A R G S T N Y F G G N P H N I T  
TTA-TTT-GGT-GAG-TCG-GCG-GGA GCT-GTG-ACG-GTT-TCA-TTG-CAG-TTG-TTG-TCG-CCT-TTA-TCG-AGA-AAT-TTG  
L F G E S A G A V T V S L Q L L S P L S R N L  
TTC-TCT-CAG-GCG-ATA-ATG-CGG-TCA-GCA-GCA-GCT-ACT-GCG-CCG-TGG-GCC-CAG-ATA-TCA-AGA-GAA-GAA-  
S S Q A I M R S A A A T A P W A R I S R E E  
AGC-ATT-ATG-AGG-GGC-ATC-CGA-TTA-GCA-GAA-GCT-GTC-CAC-TGT-CCA-CAT-TCC-AGA-ACG-GAT-ATG-GGC-  
S I I R G I R L A E A V H C P H S R T N M G  
CCT-ATG-ATT-GAG-TGT-CTC-AGA-AAG-AAG-AGT-CCA-GAT-GAA-CTA-GTC-AAG-AAT-GAA-CGG-GGA-ACT-CAG  
P M I E C P R K K S P N E L V R N E R G T Q  
GGT-ATT-TGT-GAA-TTT-CCC-TTI-GTG-CCC-ATC-ATA-GAT-GGT-TCT-TTC-TTA-GAT-GAG-TTA-CCT-CTA-CGG-GTA  
G I C E F P F V P S I N G S F L N E L P L R V  
AGA-CTA-TAT-AGA-AGA-TAT-TGG-GCC-AAC-TTA-CAA  
R L Y R R Y W A N L Q

**Fig. 2** cDNA nucleotide sequence and deduced amino acid sequence of *ChE* gene in *Daphnia magna*

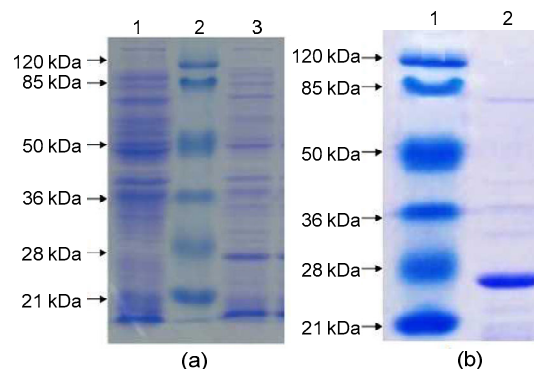
The underlined sequence represents characteristic site 2 of B type of carboxylesterases. The framed sequence represents serine active site of B type of carboxylesterases



**Fig. 3** Identification of the recombinant plasmid pET-29a(+)-*ChE* by PCR (a) and by restriction enzyme *EcoRI* and *Sall* (b) (a) Lanes 1 and 2: result of PCR amplification using transfected cells as template; Lane 3: 100 bp DNA Ladder. (b) Lane 1: digested pET-29a(+)-*ChE* by *EcoRI* and *Sall*; Lane 2: 250 bp DNA ladder marker

### 3.4 Activity of recombinant protein ChE

The activity of the recombinant ChE was investigated using acetylthiocholine iodide and propionylthiocholine iodide as substrates, respectively. The ChE was able to hydrolyze propionylthiocholine (Table 1), but it was virtually inactive towards acetylthiocholine (Table 2).



**Fig. 4** SDS-PAGE analyses of ChE expression

(a) Lane 1: total protein of *E. coli* strain BL21 (DE3) transfected with plasmid pET-29a(+); Lane 2: protein molecular weight standards; Lane 3: total protein of *E. coli* strain BL21 (DE3) containing recombinant plasmid pET-29a(+)-*ChE*. (b) Lane 1: protein molecular weight standards; Lane 2: inclusion bodies purified by HisTALON™ Gravity Column chromatography

**Table 1** Activity of purified recombinant protein ChE towards propionylthiocholine<sup>a</sup>

<i>c</i> (μg/ml)	Activity <sup>b</sup> (U/ml)	RSD (%)	<i>n</i>
0.2	0.102±0.009	8.8	3
2.0	0.878±0.036	4.1	3
20.0	9.773±0.740	7.6	3

*c*: concentration of purified protein; RSD: relative standard deviation; *n*: number of replicate. <sup>a</sup> Taking 100 mmol/L propionylthiocholine iodide as substrate. <sup>b</sup> The data are expressed as mean±standard deviation

**Table 2 Activity of purified recombinant protein ChE towards acetylthiocholine<sup>a</sup>**

<i>c</i> (μg/ml)	Activity <sup>b</sup> (U/ml)	RSD (%)	<i>n</i>
0.2	0.024±0.002	8.3	3
2.0	0.023±0.002	8.7	3
20.0	0.026±0.003	11.5	3

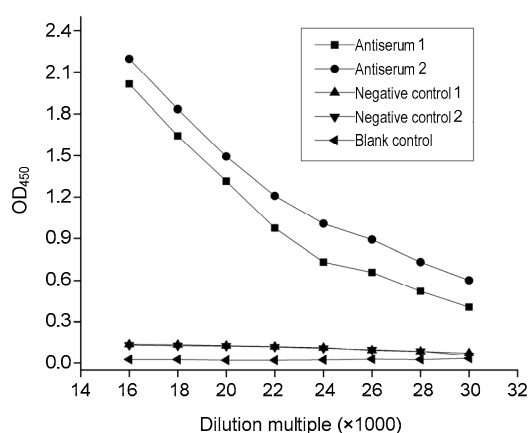
*c*: concentration of purified protein; RSD: relative standard deviation; *n*: number of replicate. <sup>a</sup>Taking 100 mmol/L acetylthiocholine iodide as substrate. <sup>b</sup>The data are expressed as mean±standard deviation

### 3.5 Properties of the antiserum

#### 3.5.1 Titer of antiserum

Values of OD<sub>450</sub> corresponding to a series of dilutions of antiserum are summarized in Fig. 5. Differences in terms of OD<sub>450</sub> correspond to Antiserum 1 and Antiserum 2. Since the immunogen employed was identical in this study, it is reasonable to believe that the difference was caused by the mice and that the immunoreactive character of the antibodies had little influence.

Based on the definition given in Section 2.8.2, the titers of Antiserum 1 and Antiserum 2 were 1:24000 and 1:22000, respectively, against a ChE concentration of 10 μg/ml (Fig. 5).

**Fig. 5 Titer of antiserum**

Concentration of recombinant protein ChE was set to be 10 μg/ml. Values were means of three separate measurements

As the titer of Antiserum 1 was higher than that of Antiserum 2, subsequent tests were conducted with Antiserum 1 unless otherwise stated.

#### 3.5.2 Cross-reactivity of antiserum

Table 3 shows rates of cross-reaction of the antiserum with the ChEs of different species. Taking

the titer of the antiserum for *Daphnia magna* as reference, the antiserum showed high rates of cross-reaction (i.e. 33.33% and 18.67%, respectively) with the enzymes from *Alona milleri* and *Macrobrachium nipponense*, two species that belong to the Class Crustacea, whereas it showed low rates of cross-reaction (i.e. 5.33%, 3.53%, 3.07%, 0.87%, 2.20%, 2.33%, and 0.67%) with *Bombyx mori*, *Chironomus kiiensis*, *Apis mellifera*, *Eisenia foetida*, *Brachydanio rerio* (brains), *Brachydanio rerio* (whole bodies without brain), and *Xenopus laevis* (tadpoles), respectively (Table 3).

**Table 3 Rate of cross-reaction of antiserum with ChEs from different species**

Species	Titer of antiserum	<i>R<sub>cr</sub></i> <sup>a</sup> (%)	<i>A<sub>ChE</sub></i> <sup>b</sup> (U/mg protein)
<i>Daphnia magna</i>	1:15000	100.00	6.52±0.22
<i>Alona milleri</i>	1:5000	33.33	5.80±0.14
<i>Macrobrachium nipponense</i>	1:2800	18.67	11.51±1.21
<i>Bombyx mori</i>	1:800	5.33	1.76±0.37
<i>Chironomus kiiensis</i>	1:530	3.53	0.20±0.18
<i>Apis mellifera</i>	1:460	3.07	18.74±2.64
<i>Eisenia foetida</i>	1:130	0.87	5.51±1.39
<i>Brachydanio rerio</i> (brains)	1:330	2.20	87.58±6.72
<i>Brachydanio rerio</i> (whole bodies without brain)	1:350	2.33	67.43±4.58
<i>Xenopus laevis</i> (tadpoles)	1:100	0.67	1.22±0.47

*R<sub>cr</sub>*: cross-reactivity rate; *A<sub>ChE</sub>*: ChE activity in crude enzyme. <sup>a</sup>Rate of cross-reaction was calculated as: (antiserum titer for *Daphnia magna*)/(antiserum titer for test species (or tissue))×100%. <sup>b</sup>The concentration of the crude enzymes was 4.7 mg protein/ml; the data are expressed as mean±standard deviation

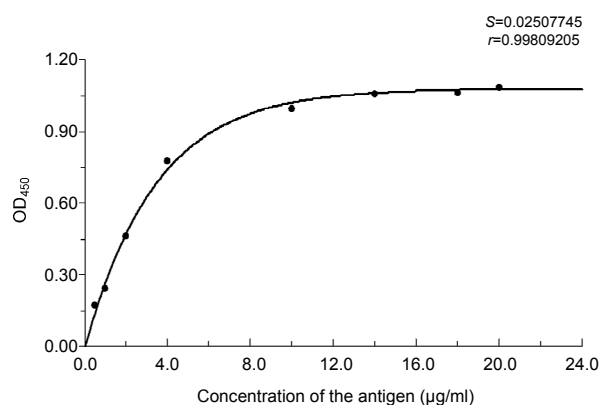
### 3.6 Development of ELISA

#### 3.6.1 Optimal dilutions of antiserum

Results of the measurement of optical absorbance corresponding to various dilutions of antiserum and concentrations of antigen are listed in Table 4. Based on the definition given in Section 2.9.1, the optimal dilution of antiserum should be 1:22000 at ChE concentrations of 7.0, 9.6, 15.0, and 20.0 μg/ml, 1:20000 at a ChE concentration of 5.0 μg/ml, and 1:18000 at a ChE concentration of 2.5 μg/ml. As all values of OD<sub>450</sub> were much lower than 1.0 at ChE concentrations of ≤1.2 μg/ml, it is reasonable to infer that to upgrade the value of OD<sub>450</sub>, dilution of the antiserum needs to be reduced.

### 3.6.2 Standard equation for determination of ChE-IR

The standard equation for determining the immunoreactive content of ChE was established at an antiserum dilution of 1:22000. The relationship between signal ( $y$ ) and concentration of recombinant ChE ( $x$ ) follows the equation  $y=1.628(1-e^{-0.1401x})$  with a correlation coefficient ( $r$ ) of 0.9981 and a standard deviation ( $S$ ) of 0.0251 (Fig. 6). The curve includes four points that are within the upper asymptote. It seems that samples with a ChE concentration of  $>10 \mu\text{g/ml}$  cannot be accurately quantified at antiserum dilutions of  $>1:22000$ .



**Fig. 6** Standard curve for determining content of immunoreactive ChE

The data were the means of three determinations

### 3.6.3 Detection limit of ELISA

The result of ten observations of “0” samples (i.e. samples that contained no ChE) indicated that the average ( $\bar{A}$ ) and the standard deviation ( $S$ ) of  $OD_{450}$  were 0.0087 and 0.0027, respectively. By inserting  $\bar{A}$  and  $S$  into the formula  $y_{\min}=\bar{A}-2S$ , a  $y_{\min}$  of 0.0033 is obtained. Inserting the value of 0.0033 into the standard equation shown above, a detection limit of 14.5 ng/ml is obtained.

### 3.6.4 Precision of ELISA

Actual levels of spiked ChE were tested at an antiserum dilution of 1:22000. The results of the test are listed in Table 5. The relative standard deviations (RSDs) of inter- and intra-batches were 3.17 and 3.90, respectively.

## 3.7 Applicability of antiserum

### 3.7.1 ChE-IR in *Daphnia magna* exposed to sublethal concentrations of triazophos

Fluctuations of ChE-IR in exposed *Daphnia magna* were tested at an antiserum dilution of 1:22000. The results are listed in Fig. 7. Induction in terms of ChE-IR was detected throughout most of the period of exposure. The maximal induction detected was 57.2% on the second day of exposure to 2.10  $\mu\text{g/L}$  triazophos. The rate of induction declined over time.

**Table 4**  $OD_{450}$  values corresponding to different dilutions of antiserum and different concentrations of antigen

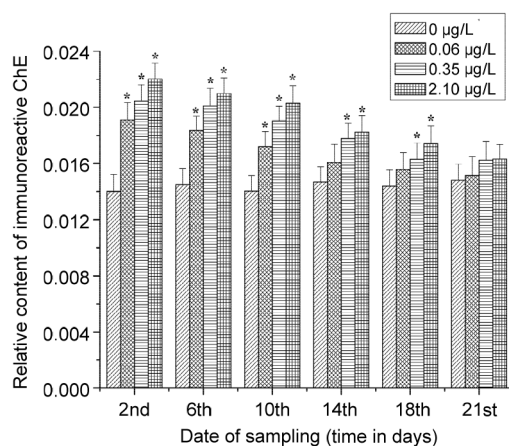
Dilution of antiserum ( $\times 1000$ )	$OD_{450}$								
	0.3 $\mu\text{g/ml}^*$	0.6 $\mu\text{g/ml}$	1.2 $\mu\text{g/ml}$	2.5 $\mu\text{g/ml}$	5.0 $\mu\text{g/ml}$	7.0 $\mu\text{g/ml}$	9.6 $\mu\text{g/ml}$	15.0 $\mu\text{g/ml}$	20.0 $\mu\text{g/ml}$
28	0.119	0.124	0.177	0.361	0.536	0.547	0.572	0.671	0.708
26	0.121	0.137	0.202	0.407	0.647	0.655	0.706	0.765	0.768
24	0.153	0.175	0.254	0.465	0.716	0.725	0.779	0.884	0.886
22	0.165	0.183	0.303	0.580	0.944	0.984	0.994	1.063	1.097
20	0.173	0.214	0.407	0.705	0.984	1.013	1.229	1.035	1.138
18	0.229	0.293	0.546	0.917	1.369	1.387	1.516	1.684	1.664

\* Concentration of purified recombinant protein ChE

**Table 5** Repeatability of indirect and non-competitive ELISA

Spiked level of ChE ( $\mu\text{g/ml}$ )	Batch	Replicates per batch	ChE-IR ( $\mu\text{g/ml}$ )	RSD (%)		
				Inter-batch	Intra-batch	Total
1	3	15	0.9854	3.49	4.36	5.20
2	3	15	1.9945	1.93	1.03	2.04
4	3	15	4.0878	2.01	3.12	4.08
6	3	15	6.0285	2.41	3.57	4.87
8	3	15	7.8579	4.71	5.62	6.71
10	3	15	9.8742	4.49	5.70	6.15

RSD: relative standard deviation



**Fig. 7** Fluctuation of ChE-IR in *Daphnia magna* exposed to triazophos of 0, 2.10, 0.35, and 0.06 µg/L, respectively. Heights of the columns represented the ratios of ChE-IR and total protein content in crude enzyme. Bars represent standard deviations of three samples. Each sample consisted of 100 pooled specimens collected randomly from 10 replications of a treatment group. The columns marked by asterisks (\*) are significantly different from control ( $P < 0.05$ )

No induction could be detected at any of the three concentrations (2.10, 0.35, and 0.06 µg/L) 21 d after the start of exposure.

### 3.7.2 ChE-IR in *Daphnia magna* acclimatized to different water temperatures

ChE-IR in *Daphnia magna* acclimatized to different water temperatures was tested at an antiserum dilution of 1:22000. The results are listed in Table 6. The induction of immunoreactive content of ChE was greater at lower temperatures. The rate of induction was 16.9% at 16 °C and 25.6% at 10 °C.

**Table 6** Effect of water temperature acclimatization on ChE-IR in *Daphnia magna*

$T_w$ (°C)	ChE-IR <sup>a</sup> (µg/mg protein)	RSD (%)	$n$	Percentage of induced ChE (%)
21	0.0160±0.0010	6.3	3	
16	0.0187±0.0007*	3.7	3	16.9
10	0.0201±0.0011*	5.5	3	25.6

$T_w$ : water temperature; RSD: relative standard deviation;  $n$ : number of replicates (each replicate consisted of 100 pooled specimens collected randomly from each temperature group). <sup>a</sup>The values are expressed as mean±standard deviation. Those marked by an asterisk (\*) are significantly different from the control ( $P < 0.05$ )

### 3.7.3 Impact of repeated freeze-and-thaw on ChE-IR levels in collected samples

The level of immunoreactive content of ChE in collected specimens that underwent repeated freeze-

and-thaw was measured at an antiserum dilution of 1:22000. Results are listed in Table 7. There were no differences in ChE content between the treatments and the control.

**Table 7** Impact of repeated freeze-and-thaw on ChE-IR level in collected samples of *Daphnia magna*

Freeze-and-thaw cycles	ChE-IR <sup>a</sup> (µg/mg protein)	RSD (%)	$n$
0	0.0160±0.0010	6.3	3
6	0.0156±0.0007	4.5	3
12	0.0153±0.0009	5.6	3

RSD: relative standard deviation;  $n$ : number of replicates (each replicate consisted of 100 pooled specimens collected randomly from each temperature group). <sup>a</sup>The values are expressed as mean±standard deviation. There were no differences between the treatments and the control ( $P > 0.05$ )

## 4 Discussion

### 4.1 Structure and activity of recombinant protein ChE

The key to obtaining recombinant ChE is to design proper primers for PCR amplification. Since *Daphnia magna* is a species that belongs to the Phylum Arthropoda, the primers should be designed, from a phylogenetic systematic point of view, based on the species that belong to the Family Daphniidae, Order Cladocera, or Class Crustacea. Because no gene sequences of *ChE* that belong to these groups of species are reported in GenBank, the sequences that belong to insects, such as *Prodenia litura* Fabricius, *Cocytodes coerulea* Guenee, *Phopalosiphum padi* Linnaeus, and *Aphis gossypii* Glover, were taken into consideration. Five pairs of degenerate primers were designed: F<sub>1</sub>: GAR(A, g)CCN(A, T, g, C)CCN(A, T, g, C)GCN(A, T, g, C)ATY(C, T)ATG, R<sub>1</sub>: GCN(A, T, g, C)ACGCAN(A, T, g, C)GGR(A, g)AAY(C, T)TC; F<sub>2</sub>: CCCY(C, T)GGN(A, T, g, C)GCS(g, C)ATGATG TG, R<sub>2</sub>: GY(C, T)AAGTTR(A, g)GCCCAATATCT; F<sub>3</sub>: TGGATH(A, T, C)TAY(C, T)GW(A, T)GN(A, T, g, C)GGN(A, T, g, C)GG, R<sub>3</sub>: CCN(A, T, g, C)GCN(A, T, g, C)S(g, C)W(A, T)Y(C, T)TCN(A, T, g, C)CCR(A, g)AA; F<sub>4</sub>: GGN(A, T, g, C)ATY(C, T)CCN(A, T, g, C)AAN(A, T, g, C)AAY(C, T)GT, R<sub>4</sub>: AACCAR(A, g)ACN(A, T, g, C)GTR(A, g)TAY(C, T)TC; F<sub>5</sub>: GGATY(C, T)W(A, T)CIGGIGAR(A, g)GAY(C, T)ATTTCGAAY(C, T)CCN(A, T, g, C)AA, R<sub>5</sub>: TCIAY(C, T)Y(C, T)TCR(A, g)TCICCY(C, T)TGIAIIACICCCATCCA.

Results of PCR amplification based on the second pair of primers (i.e. F<sub>2</sub> and R<sub>2</sub>) yielded a 717-bp ORF that encoded a putative protein consisting of 239 amino acid residues. The PCR fragments were connected to pET-29a and the pET-29a(+)-*ChE* obtained was expressed within *E. coli* BL21 (DE3). A recombinant protein ChE with a molecular weight of about 26 kDa was finally obtained. Phylogenetic analysis suggested that the overall homology between the recombinant *ChE* and the *ChE* from *Spodoptera litura* and *Anopheles stephensi* was 65.4% and 47.3%, respectively (Hall and Malcolm, 1991; Chen *et al.*, 2010).

The activity of the recombinant enzyme was tested using acetylthiocholine iodide and propionylthiocholine iodide as substrates. The enzyme seemed able to hydrolyze propionylthiocholine, but was virtually inactive for acetylthiocholine (Tables 1 and 2). According to Diamantino *et al.* (2003), crude ChE from *Daphnia magna* showed a maximal activity of 19.92 U/mg protein for propionylthiocholine and a maximal activity of 8.15 U/mg protein for acetylthiocholine. The behavior of the crude enzyme verified the existence of ChE with propionylthiocholine-affinity similar to that of the ChE developed in this study and suggested coexistence with a ChE that had higher affinity towards acetylthiocholine.

ChE with propionylthiocholine-affinity was not found in species such as *Chasmagnathus granulata*, *Palaemonetes pugio*, and *Gammarus pulex*, the species that belong to the same Order as *Daphnia*. Crude enzymes from these species were more active for acetylthiocholine than for propionylthiocholine (Monserrat and Bianchini, 1998; Key and Fulton, 2002; Xuereb *et al.*, 2009). This suggests that the preference of the enzyme for propionylthiocholine might be a feature of the species from the Class Crustacea but not of those from the Order Cladocera. The significance of this feature in determining the immunoreactive character of ChEs needs to be explored further.

According to Yang *et al.* (2013), the molecular weight of a subunit of native ChE was 84 kDa, a value that is over three times that of the recombinant ChE (i.e. 26 kDa). This suggests the failure to amplify the complete sequence of the *ChE* gene from *Daphnia magna*.

## 4.2 Specificity of the antiserum

Crude enzymes from a number of species were tested for their affinity for the antiserum. The anti recombinant ChE antiserum showed the highest rate of cross-reaction (i.e. 33.33%) with the enzyme from *Alona milleri*, a species that belongs to the Order Cladocera, and the second highest rate of cross-reaction (i.e. 18.67%) with the enzyme from *Macrobrachium nipponense*, a species that belongs to the Order Decapoda. Both of these species belong to the Crustacea, the Class to which *Daphnia magna* belongs. The rates of cross-reaction of the antiserum with the enzyme from insects (*Bombyx mori*, *Chironomus kiiensis*, and *Apis mellifera*), Annelida (*Eisenia foetida*), fish (*Brachydanio rerio*), and Amphibia (*Xenopus laevis*) were negligible (all below 6%).

For practical purposes, the protein concentration of the crude enzymes was set to 4.7 mg protein/ml for all of the species tested in this study, but differences in terms of ChE activity were detected among the species. The ChE activity was as low as 0.2 U/mg protein in *Chironomus kiiensis* and as high as 87.6 U/mg protein in *Brachydanio rerio* (brains). It is known that the titer of the antiserum relates to the concentration of ChE but not the concentration of total protein. Thus, the cross-reaction was underestimated for the ChE from *Chironomus kiiensis* and overestimated for the enzyme from *Brachydanio rerio*.

According to Liu *et al.* (2012b), the antiserum developed from native ChE had rates of cross-reaction of 10.19%, 2.81%, 2.13%, 3.93%, 5.00%, 3.88%, 3.56%, and 2.75% with the crude ChE from *Alona milleri*, *Bombyx mori*, *Chironomus kiiensis*, *Apis mellifera*, *Eisenia foetida*, *Brachydanio rerio* (brains), *Brachydanio rerio* (whole bodies without brain), and *Xenopus laevis* (tadpoles), respectively. The antiserum developed in this study behaved the same, except that it showed a higher rate of cross-reaction (33.33%) with the crude ChE from *Alona milleri*.

## 4.3 Sensitivity of ELISA

Based on the standard equation established by anti recombinant ChE antiserum at a dilution of 1:22000, the detection limit of the method was calculated to be 14.5 ng/ml. This value is comparable to the value of 24 ng/ml that was derived from a similar

protocol in which anti native ChE antiserum was used at a dilution of 1:8000 (Liu *et al.*, 2012b).

A protocol of competitive ELISA indicated a detection limit of 0.15 ng/ml when a type of polyclonal antibody was used for detection of butyrylcholinesterase content in avian blood (Khattab and Ali, 2007). Another protocol of competitive ELISA indicated a detection limit of 5 ng/ml when a type of monoclonal antibody was used for detection of ChE content in human serum (Kondo *et al.*, 1995). These examples suggest the possibility of reducing the value of the detection limit by optimizing the protocols for ELISA.

#### 4.4 Applicability of antiserum

Data summarized in Fig. 7 indicate elevation of ChE-IR in *Daphnia magna* exposed to sublethal concentrations of triazophos. Similar elevation was reported in the study by Liu *et al.* (2012a). According to Kaufer *et al.* (1999), animals accelerate synthesis of ChE when they are exposed to anticholinesterases so as to rectify the disabling of the enzyme. This process may compromise the determination of the actual inhibition of ChE. As indicated by Khattab *et al.* (1994) and Li *et al.* (2005), the problem could be solved by predetermination of ChE-IR levels using antibodies. The results of the present study suggest that the polyclonal antibodies developed against the recombinant protein ChE are as efficient as those developed against the native ChE in detecting ChE content in *Daphnia magna* exposed to anticholinesterase.

*Daphnia magna* were acclimatized to ambient temperatures of 10, 16, and 21 °C in this study. ChE-IR was found to be induced at lower temperatures. The lower the temperature, the higher was the level of ChE-IR detected (Table 6). It has long been noticed that in vivo activity of ChE alters with ambient temperature. There are some species in which the activity increases with temperature (Hogan, 1970), others in which it decreases (Baslow and Nigrelli, 1964; Rattner, 1982; Scaps and Borot, 2000; Botté *et al.*, 2013), and some in which the activity remains steady as the temperature changes (Scaps and Borot, 2000; Phillips *et al.*, 2002). Results of the present study suggest that changes in the activity of the enzyme can be explained by changes in ChE-IR. Since ChE-IR affects an animal's susceptibility to anticho-

linesterases, it is reasonable to infer that species in which ChE activity declines with increasing temperature, e.g. the reef fish *Acanthochromis polyacanthus* (Botté *et al.*, 2013) and the polychaete *Nereis diversicolor* (Scaps and Borot, 2000), are more sensitive to anticholinesterases at higher temperatures, whereas those in which ChE activity increases with temperature, e.g. the walleye *Stizostedion vitreum* (Phillips *et al.*, 2002), are more sensitive to anticholinesterases at lower temperatures.

According to the study conducted by Yang (2010), the ChE from *Daphnia magna* showed an 80% decline in activity at 25 °C 24 h after it was sampled, but the enzyme showed only an 8.6% decline in terms of ChE-IR, and the rate of decline was only 31% 7 d after sampling. It seems that ChE is more stable as an antigen than as an enzyme. To explore the sensitivity of the antigen towards repeated freezing and thawing, ChE-IR was tested in this study before and after the treatment. Repeated freezing and thawing had no influence on the test results of ChE-IR (Table 7). This suggests that collected specimens can be frozen and thawed repeatedly before they are used for testing of ChE-IR, so there is no need to subpackage them before they go through cold storage.

## 5 Conclusions

Taking 5'-CCCYGGNGCSATGATGTG-3' as forward primer and 5'-GYAAGTTRGCCCAATATCT-3' as reverse primer, PCR products of about 250, 700, and 1200 bp were obtained in this study, based on the cDNA of *Daphnia magna*. The DNA segments were connected to pMD19-T and then introduced into *E. coli* DH5 $\alpha$ . The transfected cells were sent for gene sequence analysis and results of the analysis indicated a 717-bp nucleotide ORF that encoded a putative protein consisting of 239 amino acid residues. Sequence alignment at amino acid level indicated that it contained two conserved carboxylesterase domains, i.e. the characteristic site 2 of carboxylesterase B and the serine activity site of carboxylesterase B. The sequence was then inserted into plasmid pET-29a(+) and an efficient procedure was developed for expression of pET-29a(+)-ChE within *E. coli* BL21 (DE3). Results of SDS-PAGE indicated

a major band with a molecular weight of 26 kDa. The recombinant protein ChE was found to be able to hydrolyze propionylthiocholine, but it was virtually inactive towards acetylthiocholine.

For the purpose of producing anti-ChE antibodies, the purified recombinant protein ChE was used as an antigen to immune BALB/c mice. The antiserum obtained was tested for its specificity towards crude enzymes from animals of various species. Taking the titer for *Daphnia magna* as a reference, the rates of cross-reaction were 33.33%, 18.67%, 5.33%, 3.53%, 3.07%, 0.87%, 2.20%, 2.33%, and 0.67% for *Alona milleri*, *Macrobrachium nipponense*, *Bombyx mori*, *Chironomus kiiensis*, *Apis mellifera*, *Eisenia foetida*, *Brachydanio rerio* (brains), *Brachydanio rerio* (whole bodies without brain), and *Xenopus laevis* (tadpoles), respectively. This revealed that the antiserum had specificity suitable for detecting ChE in *Daphnia magna* and species that belong to the Class Crustacea.

A type of indirect and non-competitive ELISA was developed for testing ChE-IR in *Daphnia magna*. Results of the test on "0" samples indicated a detection limit of 14.5 ng/ml. Tests on repeatability indicated an inter-batch RSD of 3.17 and an intra-batch RSD of 3.90.

ELISA was used to test ChE-IR in *Daphnia magna* exposed to sublethal concentrations of triazophos and those acclimatized to different water temperatures. Maximal induction of 57.2% in terms of ChE-IR was detected on the second day after the animal was exposed to a concentration of 2.10 µg/L triazophos. ChE-IR was found to be induced by 16.9% at 16 °C compared with the value detected at 21 °C, and the rate of induction was found to be 25.6% at 10 °C. ELISA was also employed for testing of stability of ChE-IR in collected samples. It seemed that repeated freeze-and-thaw had no influence on the outcome of the test. All these results suggest that the polyclonal antibodies developed against the recombinant ChE are as efficient as those developed against the native ChE in detecting the ChE content of *Daphnia magna*.

#### Compliance with ethics guidelines

Hong-cui LIU, Bing-qiang YUAN, and Shao-nan LI declare that they have no conflict of interest.

All institutional and national guidelines for the care and use of laboratory animals were followed.

#### References

- Abdel-Halim, K.Y., Salama, A.K., El-khateeb, E.N., et al., 2006. Organophosphorus pollutants (OPP) in aquatic environment at Damietta Governorate, Egypt: implications for monitoring and biomarker responses. *Chemosphere*, **63**(9):1491-1498.  
<http://dx.doi.org/10.1016/j.chemosphere.2005.09.019>
- Anthony, N., Rocheleau, T., Mocelin, G., et al., 1995. Cloning, sequencing and functional expression of an acetylcholinesterase gene from the yellow fever mosquito *Aedes aegypti*. *FEBS Lett.*, **368**(3):461-465.  
[http://dx.doi.org/10.1016/0014-5793\(95\)00711-H](http://dx.doi.org/10.1016/0014-5793(95)00711-H)
- Barata, C., Baird, D.J., Soares, A.M.V.M., et al., 2001. Biochemical factors contributing to response variation among resistant and sensitive clones of *Daphnia magna* Straus exposed to ethyl parathion. *Ecotoxicol. Environ. Saf.*, **49**(2):155-163.  
<http://dx.doi.org/10.1006/eesa.2001.2052>
- Baslow, M.H., Nigrelli, R.F., 1964. The effects of thermal acclimation on brain cholinesterase of the killifish, *Fundulus heteroclitus*. *Zoologica*, **49**:41-51.
- Botté, E.S., Smith-Keune, C., Jerry, D.R., 2013. Temperature: a prolonged confounding factor on cholinesterase activity in the tropical reef fish *Acanthochromis polyacanthus*. *Aquat. Toxicol.*, **140-141**:337-339.  
<http://dx.doi.org/10.1016/j.aquatox.2013.06.021>
- Bradford, M.M., 1976. A rapid and sensitive method for quantitation of microgram quantities of protein utilizing principle of protein dye binding. *Anal. Biochem.*, **72**(1-2):248-254.
- Cajaraville, M.P., Bebianno, M.J., Blasco, J., et al., 2000. The use of biomarkers to assess the impact of pollution in coastal environments of the Iberian Peninsula: a practical approach. *Sci. Total Environ.*, **247**(2-3):295-311.  
[http://dx.doi.org/10.1016/S0048-9697\(99\)00499-4](http://dx.doi.org/10.1016/S0048-9697(99)00499-4)
- Carvalho, F.D., Machado, I., Martinez, M.S., et al., 2003. Use of atropine-treated *Daphnia magna* survival for detection of environmental contamination by acetylcholinesterase inhibitors. *Ecotoxicol. Environ. Saf.*, **54**(1):43-46.  
[http://dx.doi.org/10.1016/S0147-6513\(02\)00018-0](http://dx.doi.org/10.1016/S0147-6513(02)00018-0)
- Chen, L., Li, B., Pu, G.Q., 2010. Cloning and sequence analysis of cDNA fragment of acetylcholinesterase gene in *Spodoptera litura*. *Sci. Sericult.*, **36**(1):0138-0142.
- Coelho, S., Oliveira, R., Pereira, S., et al., 2011. Assessing lethal and sub-lethal effects of trichlorfon on different trophic levels. *Aquat. Toxicol.*, **103**(3-4):191-198.  
<http://dx.doi.org/10.1016/j.aquatox.2011.03.003>
- Damásio, J., Guilhermino, L., Soares, A.M.V.M., et al., 2007. Biochemical mechanisms of resistance in *Daphnia magna* exposed to the insecticide fenitrothion. *Chemosphere*, **70**(1):74-82.  
<http://dx.doi.org/10.1016/j.chemosphere.2007.07.026>
- den Besten, P.J., Valk, S., van Weerlee, E., et al., 2001. Bioaccumulation and biomarkers in the sea star *Asterias rubens* (Echinodermata: Asteroidea): a North Sea field study. *Mar. Environ. Res.*, **51**(4):365-387.  
[http://dx.doi.org/10.1016/S0141-1136\(00\)00134-3](http://dx.doi.org/10.1016/S0141-1136(00)00134-3)

- Denoyelle, R., Rault, M., Mazzia, C., et al., 2007. Cholinesterase activity as a biomarker of pesticide exposure in *Alloleobophora chlorotica* earthworms living in apple orchards under different management strategies. *Environ. Toxicol. Chem.*, **26**(12):2644-2649.  
<http://dx.doi.org/10.1897/06-355.1>
- Diamantino, T.C., Almeida, E., Soares, A.M.V.M., et al., 2003. Characterization of cholinesterases from *Daphnia magna* Straus and their inhibition by zinc. *Bull. Environ. Contam. Toxicol.*, **71**(2):219-225.  
<http://dx.doi.org/10.1007/s00128-003-0153-7>
- Duquesne, S., 2006. Effects of an organophosphate on *Daphnia magna*, at subspecies and species levels: implications for population dynamics. *Ecotoxicol. Environ. Saf.*, **65**(2):145-150.  
<http://dx.doi.org/10.1016/j.ecoenv.2006.01.008>
- Duquesne, S., Küster, E., 2010. Biochemical, metabolic, and behavioural responses and recovery of *Daphnia magna* after exposure to an organophosphate. *Ecotoxicol. Environ. Saf.*, **73**(3):353-359.  
<http://dx.doi.org/10.1016/j.ecoenv.2009.11.008>
- Elendt, B.P., Bias, W.R., 1990. Trace nutrient deficiency in *Daphnia magna* cultured in standard medium for toxicity testing: effects of the optimization of culture conditions on life history parameters of *Daphnia magna*. *Water Res.*, **24**(9):1157-1167.  
[http://dx.doi.org/10.1016/0043-1354\(90\)90180-E](http://dx.doi.org/10.1016/0043-1354(90)90180-E)
- Gälli, R., Rich, H.W., Scholtz, R., 1994. Toxicity of organophosphate insecticides and their metabolites to the water flea *Daphnia magna*, the Microtox test and an acetylcholinesterase inhibition test. *Aquat. Toxicol.*, **30**(3):259-269.  
[http://dx.doi.org/10.1016/0166-445X\(94\)90063-9](http://dx.doi.org/10.1016/0166-445X(94)90063-9)
- Garabrant, D.H., Aylward, L.L., Berent, S., et al., 2009. Cholinesterase inhibition in chlorpyrifos workers: characterization of biomarkers of exposure and response in relation to urinary TCPy. *J. Expo. Sci. Environ. Epidemiol.*, **19**(7):634-642.  
<http://dx.doi.org/10.1038/jes.2008.51>
- Guilhermino, L., Lopes, M.C., Carvalho, A.P., et al., 1996. Inhibition of acetylcholinesterase activity as effect criterion in acute tests with juvenile *Daphnia magna*. *Chemosphere*, **32**(4):727-738.  
[http://dx.doi.org/10.1016/0045-6535\(95\)00360-6](http://dx.doi.org/10.1016/0045-6535(95)00360-6)
- Hackenberger, B.K., Jarić-Perkušić, D., Stepić, S., 2008. Effect of temephos on cholinesterase activity in the earthworm *Eisenia fetida* (Oligochaeta, Lumbricidae). *Ecotoxicol. Environ. Saf.*, **71**(2):583-589.  
<http://dx.doi.org/10.1016/j.ecoenv.2007.11.008>
- Hall, L.M.C., Malcolm, C.A., 1991. The acetylcholinesterase gene of *Anopheles stephensi*. *Cell. Mol. Neurobiol.*, **11**(1):131-141.  
<http://dx.doi.org/10.1007/BF00712805>
- Hill, E.F., 1989. Sex and storage affect cholinesterase activity in blood plasma of *Japanese quail*. *J. Wildl. Dis.*, **25**(4):580-585.  
<http://dx.doi.org/10.7589/0090-3558-25.4.580>
- Hogan, J.W., 1970. Water temperature as a source of variation in specific activity of brain acetylcholinesterase of bluegills. *Bull. Environ. Contam. Toxicol.*, **5**(4):347-353.  
<http://dx.doi.org/10.1007/BF01539949>
- Jemec, A., Drobne, D., Tisler, T., et al., 2007. The applicability of acetylcholinesterase and glutathione S-transferase in *Daphnia magna* toxicity test. *Comp. Biochem. Physiol. C: Toxicol. Pharmacol.*, **144**(4):303-309.
- Jiang, H.B., Liu, S.W., Zhao, P.C., et al., 2009. Recombinant expression and biochemical characterization of the catalytic domain of acetylcholinesterase-1 from the African malaria mosquito, *Anopheles gambiae*. *Insect Biochem. Mol. Biol.*, **39**(9):646-653.  
<http://dx.doi.org/10.1016/j.ibmb.2009.07.002>
- Kaufer, D., Friedman, A., Seidman, S., et al., 1999. Anticholinesterases induce multigenic transcriptional feedback response suppressing cholinergic neurotransmission. *Chem. Biol. Interact.*, **119-120**:349-360.  
[http://dx.doi.org/10.1016/S0009-2797\(99\)00046-0](http://dx.doi.org/10.1016/S0009-2797(99)00046-0)
- Key, P.B., Fulton, M.H., 2002. Characterization of cholinesterase activity in tissues of the grass shrimp (*Palaemonetes pugio*). *Pestic. Biochem. Physiol.*, **72**(3):186-192.  
[http://dx.doi.org/10.1016/S0048-3575\(02\)00006-8](http://dx.doi.org/10.1016/S0048-3575(02)00006-8)
- Khattab, A.D., Ali, L.S., 2007. Immunoassays for avian butyrylcholinesterase: implications for ecotoxicological testing and clinical biomonitoring. *Environ. Toxicol. Pharmacol.*, **24**(3):275-285.  
<http://dx.doi.org/10.1016/j.etap.2007.06.006>
- Khattab, A.D., Walker, C.H., Johnston, G., et al., 1994. An ELISA assay for avian serum butyrylcholinesterase: a biomarker for organophosphates. *Environ. Toxicol. Chem.*, **13**(10):1661-1667.  
<http://dx.doi.org/10.1002/etc.5620131016>
- Kondo, M., Hada, T., Fukui, K., et al., 1995. Enzyme-linked immunosorbent assay (ELISA) for *Aleuria aurantia* lectin-reactive serum cholinesterase to differentiate liver cirrhosis and chronic hepatitis. *Clin. Chim. Acta*, **243**(1):1-9.  
[http://dx.doi.org/10.1016/0009-8981\(95\)06146-0](http://dx.doi.org/10.1016/0009-8981(95)06146-0)
- Li, C.X., Dong, Y.D., Liu, M.D., et al., 2007. Alternative splicing of *ace1* gene in *Culex pipiens pallens* and its effect to enzyme activity. *Acta Parasitol. Med. Entomol. Sin.*, **14**(3):153-157 (in Chinese).
- Li, F., Han, Z.J., 2002. Cloning and sequencing of two acetylcholinesterase cDNA fragments from cotton aphid, *Aphis gossypii* Glover. *Zool. Res.*, **23**(5):444-448 (in Chinese).
- Li, S.N., Tan, Y.J., 2011. Hormetic response of cholinesterase from *Daphnia magna* in chronic exposure to triazophos and chlorpyrifos. *J. Environ. Sci.*, **23**(5):852-859.  
[http://dx.doi.org/10.1016/S1001-0742\(10\)60516-5](http://dx.doi.org/10.1016/S1001-0742(10)60516-5)
- Li, S.N., Xie, X.C., Tan, Y.J., et al., 2005. Induction of triazophos to brain acetylcholinesterase from topmouth gudgeon, *Pseudorasbora parva*. *Chin. J. Pest. Sci.*, **7**(1):59-62 (in Chinese).
- Lin, T., Li, L.N., Chang, R.L., et al., 2007. Cloning and

- sequence analysis of acetylcholinesterase gene of *Pseudophacopteron canarium*. *J. Jilin Agric. Univ.*, **29**(4): 368-370 (in Chinese).
- Liu, H.C., Yuan, B.Q., Li, S.N., 2012a. Altered quantities and *in vivo* activities of cholinesterase from *Daphnia magna* in sub-lethal exposure to organophosphorus insecticides. *Ecotoxicol. Environ. Saf.*, **80**:118-125.  
<http://dx.doi.org/10.1016/j.ecoenv.2012.02.014>
- Liu, H.C., Yang, Y.X., Li, S.N., 2012b. Quantitative analysis of cholinesterase from *Daphnia magna* by indirect and non-competitive enzyme-linked immunosorbent assay. *J. Zhejiang Univ. (Agric. Life Sci.)*, **38**(3):347-354 (in Chinese).
- Monserrat, J.M., Bianchini, A., 1998. Some kinetic and toxicological characteristics of thoracic ganglia cholinesterase of *Chasmagnathus granulata* (Decapoda, Grapsidae). *Comp. Biochem. Physiol. C: Toxicol. Pharmacol.*, **120**(2): 193-199.
- Ni, X.Y., Tomita, T., Kasai, S., et al., 2003. cDNA and deduced protein sequence of acetylcholinesterase from the diamondback moth, *Plutella xylostella* (L.) (Lepidoptera: Plutellidae). *Appl. Entomol. Zool.*, **38**(1):49-56.  
<http://dx.doi.org/10.1303/aez.2003.49>
- Phillips, T.A., Summerfelt, R.C., Atchison, G.J., 2002. Environmental, biological, and methodological factors affecting cholinesterase activity in walleye (*Stizostedion vitreum*). *Arch. Environ. Contam. Toxicol.*, **43**(1):75-80.  
<http://dx.doi.org/10.1007/s00244-002-1134-2>
- Printes, L.B., Fellowes, M.D.E., Callaghan, A., 2008. Clonal variation in acetylcholinesterase biomarkers and life history traits following OP exposure in *Daphnia magna*. *Ecotoxicol. Environ. Saf.*, **71**(2):519-526.  
<http://dx.doi.org/10.1016/j.ecoenv.2007.12.001>
- Printes, L.B., Fernandes, M.N., Espíndola, E.L.G., 2011. Laboratory measurements of biomarkers and individual performances in *Chironomus xanthus* to evaluate pesticide contamination of sediments in a river of southeastern Brazil. *Ecotoxicol. Environ. Saf.*, **74**(3):424-430.  
<http://dx.doi.org/10.1016/j.ecoenv.2010.10.033>
- Rattner, B.A., 1982. Diagnosis of anticholinesterase poisoning in birds: effects of environmental temperature and underfeeding on cholinesterase activity. *Environ. Toxicol. Chem.*, **1**(4):329-335.  
<http://dx.doi.org/10.1002/etc.5620010408>
- Sáenz, L.A., Seibert, E.L., Zanette, J., et al., 2010. Biochemical biomarkers and metals in *Perna perna* mussels from mariculture zones of Santa Catarina, Brazil. *Ecotoxicol. Environ. Saf.*, **73**(5):796-804.  
<http://dx.doi.org/10.1016/j.ecoenv.2010.02.015>
- Sanchez-Hernandez, J.C., Fossi, M.C., Leonzio, C., et al., 1998. Use of biochemical biomarkers as a screening tool to focus the chemical monitoring of organic pollutants in the Biobio river basin (Chile). *Chemosphere*, **37**(4):699-710.  
[http://dx.doi.org/10.1016/S0045-6535\(98\)00085-X](http://dx.doi.org/10.1016/S0045-6535(98)00085-X)
- Scaps, P., Borot, O., 2000. Acetylcholinesterase activity of the polychaete *Nereis diversicolor*: effects of temperature and salinity. *Comp. Biochem. Physiol. C: Pharmacol. Toxicol. Endocrinol.*, **125**(3):377-383.  
[http://dx.doi.org/10.1016/S0742-8413\(00\)00087-6](http://dx.doi.org/10.1016/S0742-8413(00)00087-6)
- Stien, X., Percic, P., Gnassia-Barelli, M., et al., 1998. Evaluation of biomarkers in caged fishes and mussels to assess the quality of waters in a bay of the NW Mediterranean Sea. *Environ. Pollut.*, **99**(3):339-345.  
[http://dx.doi.org/10.1016/S0269-7491\(98\)00013-X](http://dx.doi.org/10.1016/S0269-7491(98)00013-X)
- Sturm, A., Hansen, P.D., 1999. Altered cholinesterase and monooxygenase levels in *Daphnia magna* and *Chironomus riparius* exposed to environmental pollutants. *Ecotoxicol. Environ. Saf.*, **42**(1):9-15.  
<http://dx.doi.org/10.1006/eesa.1998.1721>
- Sturm, A., Wogram, J., Hansen, P.D., et al., 1999. Potential use of cholinesterase in monitoring low levels of organophosphates in small streams: natural variability in three-spined stickleback (*Gasterosteus aculeatus*) and relation to pollution. *Environ. Toxicol. Chem.*, **18**(2):194-200.  
<http://dx.doi.org/10.1002/etc.5620180214>
- van Oosterom, J., King, S.C., Negri, A., et al., 2010. Investigation of the mud crab (*Scylla serrata*) as a potential bio-monitoring species for tropical coastal marine environments of Australia. *Mar. Pollut. Bull.*, **60**(2):283-290.  
<http://dx.doi.org/10.1016/j.marpolbul.2009.09.007>
- Vesela, S., Kuca, K., Jun, D., 2006. Toxicity of the nerve agent tabun to *Daphnia magna*, a new experimental species in military toxicology. *Chem. Ecol.*, **22**(2):175-180.  
<http://dx.doi.org/10.1080/02757540600579383>
- Villatte, F., Bachmann, T.T., 2002. How many genes encode cholinesterase in arthropods? *Pestic. Biochem. Physiol.*, **73**(2):122-129.
- Xuereb, B., Noury, P., Felten, V., et al., 2007. Cholinesterase activity in *Gammarus pulex* (Crustacea Amphipoda): characterization and effects of chlorpyrifos. *Toxicology*, **236**(3):178-189.  
<http://dx.doi.org/10.1016/j.tox.2007.04.010>
- Xuereb, B., Chaumot, A., Mons, R., et al., 2009. Acetylcholinesterase activity in *Gammarus fossarum* (Crustacea Amphipoda): intrinsic variability, reference levels, and a reliable tool for field surveys. *Aquat. Toxicol.*, **93**(4): 225-233.  
<http://dx.doi.org/10.1016/j.aquatox.2009.05.006>
- Yang, L.G., Hu, S.C., Wei, P.H., et al., 1998. Enzyme Immunoassay. Nanjing University Press, Nanjing, p.279-281 (in Chinese).
- Yang, Y.X., 2010. Immunoassays for *Daphnia magna* cholinesterases: a biomarker for organophosphates. Master's Thesis, Zhejiang University, Hangzhou, p.1-95 (in Chinese).
- Yang, Y.X., Niu, L.Z., Li, S.N., 2013. Purification and studies on characteristics of cholinesterases from *Daphnia magna*. *J. Zhejiang Univ.-Sci. B (Biomed. & Biotechnol.)*, **14**(4): 325-335.  
<http://dx.doi.org/10.1631/jzus.B1200113>
- Zhang, T., 2008. Expression of *Drosophila melanogaster* acetylcholinesterase (*AchE*) gene in *Pichia pastoris*. Master's Thesis, Chongqing University, Chongqing, p.1-52 (in Chinese).

Zhou, M.J., Zhang, C.L., Richard, P., *et al.*, 2000. Choline oxidase: a useful tool for high-throughput assays of acetylcholinesterase, phospholipase D, phosphatidylcholine-specific phospholipase C, and sphingomyelinase. *Proc. SPIE*, **3926**:166-171.  
<http://dx.doi.org/10.1117/12.380507>

## 中文概要

**题目:** 大型溙胆碱酯酶蛋白的原核表达及其多克隆抗体的制备和适用性研究

**目的:** 原核表达并纯化大型溙胆碱酯酶 (ChE), 制备鼠抗大型溙 ChE 多克隆抗体, 对抗体的适用性进行研究。

**创新点:** 首次通过原核表达获得了大型溙重组 ChE 蛋白, 通过免疫小鼠获得了高效价、高特异性的多克隆抗体, 通过样品检测证明了抗体的适用性。

**方法:** 利用聚合酶链式反应 (PCR) 技术获得大型溙 *ChE* 基因编码序列, 并将其亚克隆至原核表达载体 pET-29a(+), 构建重组表达质粒 pET-ChE, 用异丙基硫代半乳糖苷 (IPTG) 诱导重组蛋白的表达; 对表达产物进行聚丙烯酰胺凝胶电泳 (SDS-PAGE) 和酶活性检测, 并对蛋白进行纯化 (图 4); 使用纯化蛋白免疫 BALB/c 小鼠, 制备多克隆抗体 (图 5), 用酶联免疫吸附分析法 (ELISA) 对处于三唑磷和低温胁迫下以及经反复冻融处理的大型溙体内的 ChE 含量变化进行检测 (图 7、表 6 和 7), 以评价抗体的可适用性。

**结论:** 获得了高纯度的 ChE 重组蛋白; 免疫小鼠后, 获得了特异性强、高效价的抗体; 通过对处于三唑磷和低温胁迫下以及经过反复冻融处理的大型溙体内的 ChE 含量的检测, 证明了抗体的适用性。

**关键词:** 大型溙; 胆碱酯酶; 聚合酶链式反应 (PCR); 重组胆碱酯酶蛋白; 酶联免疫吸附分析法 (ELISA)