



Correspondence

<https://doi.org/10.1631/jzus.B2500307>



Sporadic Alzheimer's disease with bipolar-like features: a case report and a brief review of the current research status

Lingzhuo KONG^{1*}, Yan YANG^{1*}, Weihua ZHOU¹, Shaohua HU^{1,2,3,4,5,6,7✉}

¹Department of Psychiatry, The First Affiliated Hospital, Zhejiang University School of Medicine, Hangzhou 310003, China

²Nanhu Brain-Computer Interface Institute, Hangzhou 310003, China

³Zhejiang Key Laboratory of Precision Psychiatry, Hangzhou 310003, China

⁴MOE Frontier Science Center for Brain Science and Brain-Machine Integration, Zhejiang University School of Medicine, Hangzhou 310003, China

⁵Brain Research Institute of Zhejiang University, Hangzhou 310003, China

⁶Department of Psychology and Behavioral Sciences, Zhejiang University, Hangzhou 310003, China

⁷Zhejiang Engineering Center for Mathematical Mental Health, Hangzhou 310003, China

Alzheimer's disease (AD) is among the main causes of cognitive impairment, memory loss, and dementia, particularly in old adults. It has been listed as one of the most expensive, lethal, and burdening diseases of the 21st century and develops with the process of aging worldwide (Scheltens et al., 2021). Currently, it is widely acknowledged that the typical pathogenesis of AD involves the deposition of amyloid- β (A β) and Tau proteins in the cerebral parenchyma and vasculature, intraneuronal neurofibrillary tangles, and the gradual degeneration of synapses (Scheltens et al., 2016; Rostagno, 2022). According to several hypotheses, abnormalities and dysfunctions in vascular structure, mitochondrial metabolism, oxidative stress, glucose utilization, and neuroinflammation are considered fundamental for AD pathology (Scheltens et al., 2016).

Affective disorders, mainly depression and bipolar disorder (BD), mainly affect adolescents and young adults and can lead to adverse prognosis if not treated timely and systematically. Of note, for a definitive diagnosis of BD, according to The Diagnostic and Statistical Manual of Mental Disorders, Fifth Edition,

a single episode of mania (hypomania) should last for at least four days, with depression for at least two weeks. The pharmacotherapy of affective disorders mainly encompasses antidepressants, atypical antipsychotics, and mood stabilizers, with the latter commonly applied among individuals with first onset of BD and a blank medical history of psychiatric interventions (Bowden, 2005).

Patients with long-term affective disorders may present with cognitive deficits (O'Brien, 2005; Solé et al., 2017). While emotional dysregulation also makes up part of the dementia syndrome (Huang et al., 2024), AD and affective disorders can nonetheless be usually distinguished with reference to demographic features, the regularity of emotional changes, imaging examinations, and drug effects. However, in some atypical cases, the clinical manifestations can be confusing, leading to delayed diagnosis and therapeutics, worsening the prognosis, and resulting in a heavier disease burden.

Herein, we report the case of an AD patient with clinical manifestations similar to BD who went through several therapeutic attempts before the disease approached a stable status. This paper aims to summarize the easy-to-misjudge symptoms, common underlying mechanisms, and possible therapeutic regimens to enhance current knowledge and clinical practice in this field.

A 75-year-old woman with primary education and living in the countryside visited the psychiatry department at The First Affiliated Hospital of Zhejiang

✉ Shaohua HU, dorhushaohua@zju.edu.cn

* The two authors contributed equally to this work

Shaohua HU, <https://orcid.org/0000-0003-0570-670X>

Lingzhuo KONG, <https://orcid.org/0009-0000-1635-5963>

Yan YANG, <https://orcid.org/0009-0002-5476-9651>

Received June 7, 2025; Revision accepted June 9, 2025;
Crosschecked Apr. 1, 2026; Published online Apr. 15, 2026

© Zhejiang University Press 2026

University School of Medicine on July 15th, 2024, accompanied by family members living with her. She reported completely different mood states and behaviors between any two successive days: on the first day, she would be in extremely high spirit, laughing and talking endlessly of exaggerated content and doing extra farming or needlework, without much need for sleep (three to four hours on average); the next day, her mood would turn down and she would lay in bed all day crying, sometimes with suicidal thoughts. On the third day, a high spirit similar to the first day would return. Her family members reported that such circulation had been happening for the past two years, with a gradual loss of short-term memories, while distant memories were maintained. Six months ago, the patient visited the neurology department and was diagnosed with suspected AD. She received donepezil (5 mg per night), memantine (10 mg per day), quetiapine (25 mg per night), and mecobalamin (0.5 mg three times a day); however, the emotional and behavioral abnormalities changed little. No personal or family history of affective disorders, dementia, stroke, brain injury, cardiovascular diseases, hypertension, metabolic diseases, or syphilis was present.

After signing in at the inpatient ward, the patient went through several examinations, all of which were done on the day the patient was in high spirit. The Mini-mental State Examination (MMSE) score was 25 and the Montreal Cognitive Assessment (MoCA) score was 27, indicating normal cognitive function. The Hamilton Anxiety Scale (HAMA) score was 7, the Hamilton Depression Scale (HAM-D) score was 5, and the Young mania Rating Scale (YMRS) score was 15, suggesting observed hypomania. A structured diagnostic interview was not carried out on the first day, since the patient could not answer each question accurately. Physical examinations showed no peculiarities. Laboratory tests were performed, including blood routine examination, metabolism, coagulation function, thyroid profiles, infection, basic inflammatory state, and tumor indexes, and a few indexes were beyond normal (Table 1). Two indexes related to inflammation were elevated (Table 2). However, the patient refused to receive lumbar puncture, so we could not test the chemicals in the cerebrospinal fluid (CSF).

The resting-state electroencephalogram showed a slightly slow background electrical rhythm and deficits in amplitude modulation. Besides, multiple thyroid

Table 1 Results of laboratory tests beyond the normal range (all tested in serum) examined during this time of hospitalization in the psychiatric department

Index	Tested value	Normal range*
Urinary leukocyte	26.9 cells/ μ L	0–16.9 cells/ μ L
Ferritin	406.1 ng/mL	7.0–323.0 ng/mL
Albumin	39.9 g/L	40.0–55.0 g/L
Glutamyltranspeptidase	58 U/L	7–45 U/L
Uric acid	418 μ mol/L	155–357 μ mol/L
Very low-density lipoprotein-C	0.13 mmol/L	0.31–1.25 mmol/L
Creatine phosphokinase	237 U/L	40–200 U/L
Lactic dehydrogenase	284 U/L	120–250 U/L
Hydroxybutyrate dehydrogenase	215 U/L	72–182 U/L
D-Dimer	920 μ g/L FEU	0–700 μ g/L FEU

* These are the reference ranges decided by the kits for laboratory examinations used in The First Affiliated Hospital of Zhejiang University School of Medicine. FEU: fibrinogen equivalent unit.

Table 2 Results of laboratory tests directly or indirectly related to inflammation (all tested in serum) examined during this time of hospitalization in the psychiatric department

Index	Tested value	Normal range*
C-reactive protein	0.43 mg/L	0–8.00 mg/L
Lactic dehydrogenase (elevated)	284 U/L	120–250 U/L
Hydroxybutyrate dehydrogenase (elevated)	215 U/L	72–182 U/L
IL-1 β	0.23 pg/mL	0–12.40 pg/mL
IL-2	0.84 pg/mL	0–5.71 pg/mL
IL-4	0.91 pg/mL	0–3.00 pg/mL
IL-5	0.54 pg/mL	0–3.10 pg/mL
IL-6	2.24 pg/mL	0–5.30 pg/mL
IL-8	7.40 pg/mL	0–20.60 pg/mL
IL-10	1.80 pg/mL	0–4.91 pg/mL
IL-17A	19.98 pg/mL	0–20.60 pg/mL
IL-12P70	1.03 pg/mL	0–3.40 pg/mL
IFN- α	0.90 pg/mL	0–8.50 pg/mL
IFN- γ	4.71 pg/mL	0–7.42 pg/mL
TNF- α	0.74 pg/mL	0–4.60 pg/mL

* These are the reference ranges decided by the kits for laboratory examinations used in The First Affiliated Hospital of Zhejiang University School of Medicine. IL: interleukin; IFN: interferon; TNF: tumor necrosis factor.

nodules (one in the right lobe was Thyroid Imaging Reporting and Data System (TI-RADS) type IV-a, and the rest were all TI-RADS type III) were also detected

via ultrasound. Brain magnetic resonance imaging (MRI) of the AD sequence (1.5 T) routine scan revealed mild sclerosis of the bilateral hippocampus (metastasis-associated protein 1 (MTA-1)) and scattered high signals distributed in the frontal parietal cortex and white matter around the lateral ventricles (Fazekas-1), while no atrophy in other regions was reported (Fig. 1). The patient did not receive any other examinations during hospitalization.

After admission, the patient was treated with 150 mg mannan capsule three times a day, 10 mg donepezil every night, 50 mg quetiapine every night, and 10 mg memantine every day. On the second day, 250 mg valproate at night was initiated to help stabilize her mood, and a structured diagnostic interview was carried out. Notably, the patient reported slight anxiety about her changeable mood states, which was mainly due to her worry of possible secondary brain diseases, such as cerebrovascular diseases and dementia. We failed to find any self-reported depressive symptoms closely correlated with the changing mood itself. However, the regularity of emotional and behavioral changes did not change much after 4 d. Then, quetiapine was gradually raised to 200 mg per night, while valproate was raised to 500 mg per night. On the tenth day after signing in, the patient reported the period of high spirit to decline to a few hours, while that of low mood to last for half a day. During the rest time, the mood stayed generally stable with normal

sleep requirements (around 7 h). Subsequently, an additional 250 mg of valproate was added during the daytime. The patient signed out from the inpatient ward 14 d after signing in, by which time her emotional and behavioral abnormalities had mostly disappeared, and she was able to perform daily housework and social interactions. On the day of signing out, the score of MMSE was 26, MoCA was 27, HAMA was 3, HAMD was 4, and YMRS was 6.

At the one-month follow-up, the pharmacological regimens were kept after detailed estimation, and the disease stayed generally stable. The scores of MMSE and MoCA were both 26, HAMA was 2, HAMD remained 4, and YMRS remained 6. The patient also underwent brain ^{18}F -AV45 positron emission tomography-computed tomography (PET-CT) and magnetic resonance enhanced T2 star-weighted angiography (MR ESWAN) with T2 fluid-attenuated inversion recovery (FLAIR) (1.5 T) imaging, and this examination was repeatedly performed two months later when she visited the outpatient section of the neurological department. The results showed significantly increased uptake of ^{18}F -AV45 in the bilateral facial lobe, parietal lobe, temporal lobe, occipital lobe, and cingulate gyrus, indicating elevated $\text{A}\beta$ deposition. A microhemorrhagic focus was also noticed in the right front temporal lobe, while low signal foci of ESWAN were also observed to be distributed within the margin of the left ventricle (Fig. 2). Besides, no atrophy in other regions

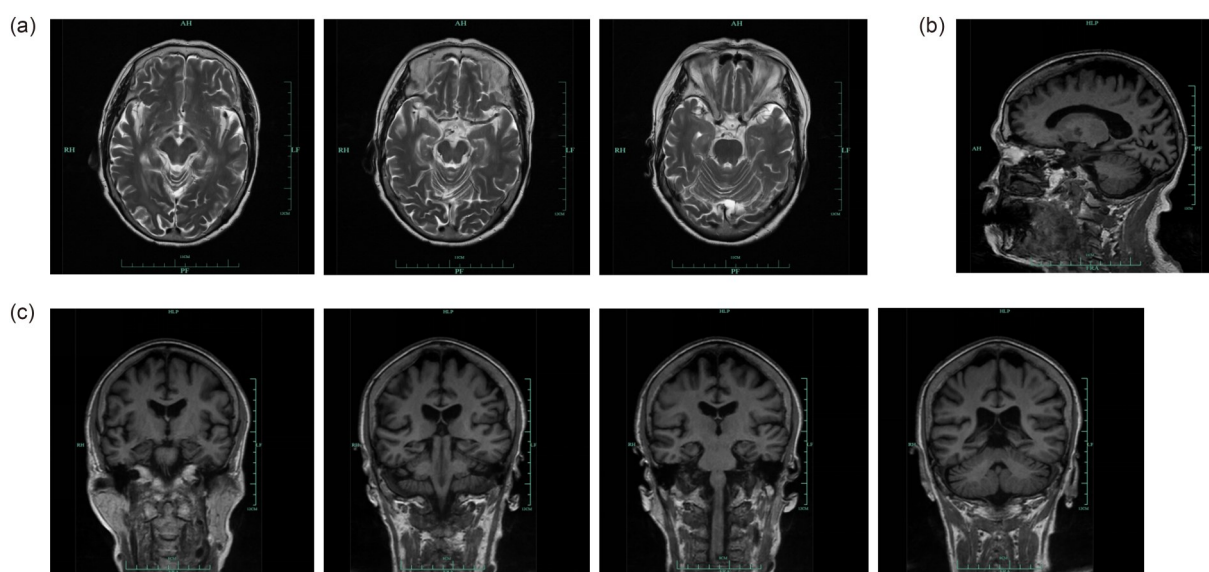


Fig. 1 Brain magnetic resonance imaging (MRI) results (mainly of the hippocampus levels). (a) The T2 weighted images, cross-section; (b) The T1 weighted image, vertical section; (c) The T1 weighted images, cross-section.

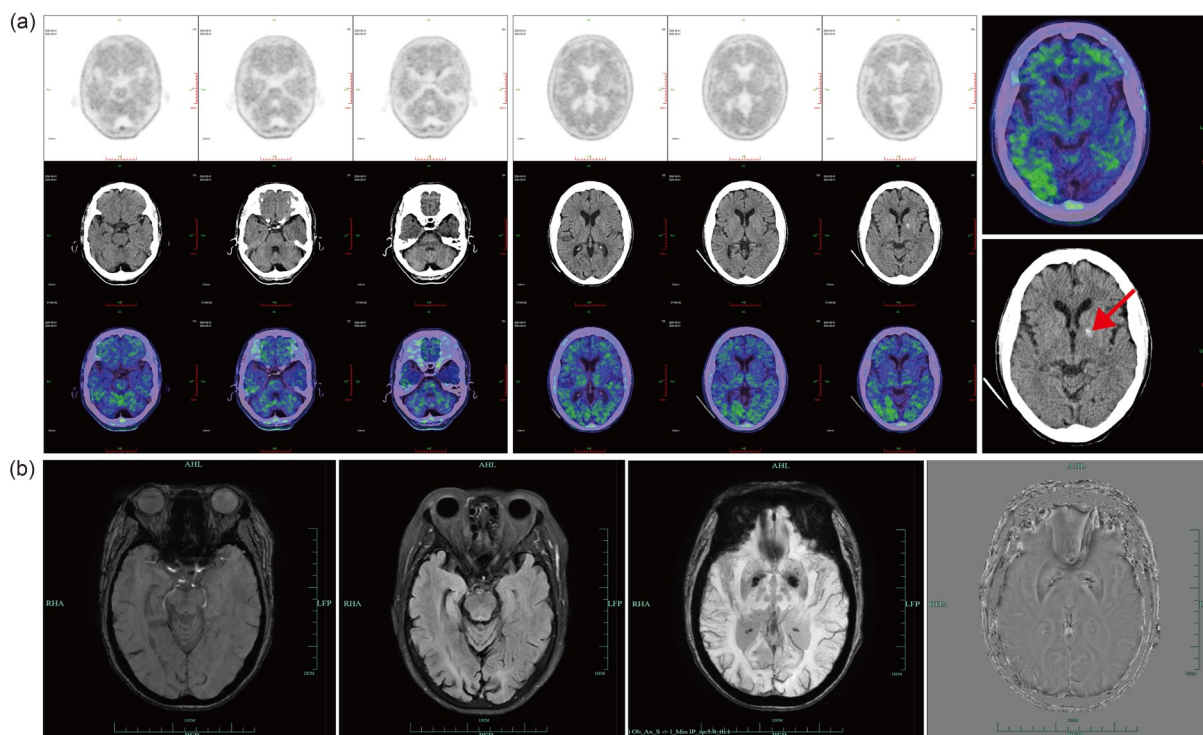


Fig. 2 Results of ^{18}F -AV45 positron emission tomography-computed tomography (PET-CT) (a) and magnetic resonance enhanced T2 star-weighted angiography (MR ESWAN) with T2 fluid-attenuated inversion recovery (FLAIR) (1.5 T) imaging (b) (mainly of the hippocampus levels). The red arrow shows the microhemorrhagic focus in the right front temporal lobe. The patient went through another session of MR ESWAN with T2 FLAIR (1.5 T) imaging examination two months later (in total, three months after hospitalization), and the images and reports were mostly in accordance with the previous one.

was reported. In addition, during the visit to the neurological department, the patient was tested for MMSE and MoCA once again, which reported values of 27 and 26, respectively. Accordingly, the final diagnosis was “AD with bipolar-like features.”

In this case report, we characterized a 75-year-old woman with memory loss and changeable mood states and behaviors who was diagnosed with AD after months of examinations and therapeutic attempts. With the aid of both anti-neurodegenerative and mood stabilizing pharmacotherapies, the disease approached generally stable status, with a partial recovery of social functions.

The typical process of AD is mainly divided into three stages: (1) early stage: mainly presenting difficulties in declarative memory, with common accompanying depressive symptoms; (2) processing stage: the cognitive function gradually and generally worsens, and disorders of thought, perception, affectivity, and behaviors also occur; (3) late stage: neurological disturbances frequently occur, and self-care ability is lost completely (Förstl and Kurz, 1999). However, in this case, the patient did not show significant cognitive

impairment, while the psychiatric manifestations (emotional changes, total duration since the onset, and especially, the regularity of emotional changes) were obviously more severe and fluctuating compared to the reported common AD process. The possible diagnosis of somatic disease-induced dementia (e.g., stroke, hyperthyroidism, and tertiary syphilis) could be easily excluded after examinations, leaving affective disorders (mainly BD) and frontotemporal dementia (FTD) for further differential diagnoses. As is known, a priority principle exists in the psychiatric diagnostic system, namely, if clinical and experimental evidence of dementia is detected, the main diagnosis should be considered as cognitive impairment, even though affective symptoms are also observed (Sachdev et al., 2014). In our case, the existence of manic symptoms was observed, so a diagnosis of unipolar depression was excluded. In addition, even though the woman presented with bipolar-like manifestations, deposition of A β plaques and hippocampus sclerosis—the “gold standard” of AD—were found, indicating the diagnosis of neurodegeneration to be superior. Also, both

depressive and manic states lasted for less than two days, which was discordant with the acknowledged diagnostic standard of BD (Anderson et al., 2012).

FTD was also considered for the rapid changes in mood states. A recent systematic review showed that along with the progression of AD, mania-like symptoms can occur, and such symptoms have also been observed among patients with cognitive decline in FTD (Elefante et al., 2023). Overlaps in the cognitive and behavioral features, default mode network, and salience network, as well as genetic differences, were also summarized (Zhou and Seeley, 2014; Goldman and van Deerlin, 2018; Musa et al., 2020; Leocadi et al., 2023). In our patient, FTD was eventually excluded afterwards since (1) abnormalities indicating the pyramidal and extrapyramidal system damage were not observed through repeated physical examinations and (2) brain MRI and PET-CT did not show asymmetric atrophy of the frontal and temporal lobes or differences in metabolism. However, the lack of pathological examinations including Pick cells and Pick bodies, Tau quantification, and A β fragments limited further differential diagnoses. Nevertheless, changes in the emotional states, personality, and cognitive scale scoring in this case did not significantly deviate from the acknowledged values, and the diagnosis needed to be confirmed by additional imaging methods. As such, special emotional fluctuation patterns may be observed in some cases of AD at the early stage, which are easily confused with FTD, thus requiring further laboratory and imaging tests.

According to current knowledge, the pathology of AD mainly focuses on several specific changes in the central nervous system, namely, deposition of A β plaques, excessive phosphorylation of Tau protein, and neurofibrillary tangles, while neuroimaging features such as hippocampal atrophy and sclerosis are also listed as strong diagnostic evidence (Deture and Dickson, 2019). However, previous pharmacological tests carried out in mouse models were found to be inefficient in certain populations of AD patients, which might be due to the heterogeneity between different AD subtypes. For instance, a study carried out in 2021 reported several molecular AD subtypes corresponding to different combinations of dysregulated pathways (Neff et al., 2021). In addition, based on the distribution of Tau-related pathology and regional brain atrophy, limbic-predominant AD and hippocampal-sparing

AD were identified from typical cases (Ferreira et al., 2020). Of note, such subtypes differ from each other in the onset age, assessment age, gender difference, education duration, extent and process of cognitive impairment, apolipoprotein E (APOE) ϵ 4 genotype, and biomarker levels in the peripheral and central environment, which might produce valuable information aiding early diagnosis and personal therapeutics. However, at present, there is a lack of evidence to determine which subtype our reported case should be classified as, raising concerns that (1) atypical AD exists and its clinical features might be different from the previously known “mainly and especially cognitive impairment” manifestation, and (2) current psychiatric and neurological treatments of AD should be re-evaluated and expanded to suit the atypical subtypes.

For the differential diagnosis of AD with emotional deficits and affective disorders, shared neuropathology exists that partly explains the common symptoms (Huang et al., 2024). In fact, a bidirectional interaction pattern between AD and emotional changes has been promoted. On the one hand, a meta-analysis suggested the accompanying depression and anxiety of AD to be rooted in the degeneration of neural circuits within emotional processing regions, with the underlying mechanisms including atrophy of the frontal-limbic system, elevated strychnine-sensitive glycine receptor functioning, selective reduction of *N*-methyl-D-aspartate receptor subtype 2A (NR2A) density, and the neurotoxicity of A β , total Tau (t-Tau), and phosphorylated Tau (p-Tau) (Botto et al., 2022). In addition, emotional abnormalities can also act as a subsequent reaction of cognitive deficits and loss of social functions (Botto et al., 2022). On the other hand, affective disorders might also increase the risk of subsequent dementia (da Silva et al., 2013). Meanwhile, elevated amyloid levels were found in the CSF among old adults with major depression, who showed elevated possibility of developing subsequent AD (Harrington et al., 2015; Xu et al., 2021), while antidepressants might reduce the incidence of AD by stabilizing neuroinflammation in the central nervous system via lifting the levels of anti-inflammatory cytokine transforming growth factor β 1 (Botto et al., 2022). In addition, higher levels of Tau in the serum, CSF, and brain regions were detected among old adults without cognitive deficits, who have a possibility of developing cognitive deficits twice as high as those with normal Tau levels (Babulal

et al., 2020). Meanwhile, there is much less evidence of the association between mania (hypomania) and AD. The difference in biomarkers of AD between individuals with BD and healthy controls was found to be smaller, but abnormalities of amyloid production/clearance during an acute episode of BD were found to be similar to AD pathology (Knorr et al., 2022). Nevertheless, differential diagnosis should also be addressed, since the accompanying emotional symptoms could also occur during the process of AD. For example, self-insight remains in the early stage of AD, and the patient might realize the gradual weakening of memory, changeable state of emotions, and cognitive decline, which might also lead to secondary emotional deficits.

According to previous research, the shared mechanisms between AD and affective disorders (e.g., depression and BD) may include chronic inflammation (Vogelgsang et al., 2020), dysfunction of the gut microbiota (Generoso et al., 2021), subsequent temporal or frontal cortex dysfunction (Robbins et al., 1996), and deficits in adult hippocampal neurogenesis (Berger et al., 2020). It was previously reported that reduced hippocampal volume, decreased numbers of granule neurons in the hippocampus, and decreased vascularization of the neurogenic niche were found by neuroimaging methodologies in patients with major depressive disorder, while intervention by antidepressants might help increase the number of neural progenitor cells in the hippocampus (Tae et al., 2011; Boldrini et al., 2012; Huang et al., 2013). At the same time, evidence of hippocampal neurogenesis, including a reduction in hippocampal neurons and doublecortin (DCX)+neuroblasts, was also found in both animal models and AD patients (West et al., 1994; Jin et al., 2004; Choi and Tanzi, 2019; Toda et al., 2019). In addition, shared genetic risks located specifically in the hippocampus area were found to be associated with several processes of neurogeneration (Xu et al., 2018), which further strengthens the notion of hippocampal neurogenesis in the pathogenesis of both AD and emotional dysregulation.

Notably, long-lasting neuroinflammation has been attracting more and more interest. T helper 17 (Th17) cells are among the cluster of differentiation 4-positive (CD4⁺) Th subpopulation producing inflammatory cytokines that induce local and systematic inflammation, activating microglia, and recruiting other immune cell types. It was found that encephalitogenic inflammatory Th17 cells play a role in the dysfunction

of gut-brain axis (GBA) and chronic neuroinflammation, directly or indirectly accelerating the process of AD and depression (Shi et al., 2022). Another notable issue is GBA. It was reported that the gut microbiota and their metabolites are crucial for leaky gut, overactivated microglia, and subsequent neuroinflammation (Carloni and Rescigno, 2023). Compared to healthy controls, patients with AD and major depression had higher abundance of bacteria with proinflammatory properties and lower levels of short-chain fatty acids (Russo et al., 2018; Eicher and Mohajeri, 2022). Meanwhile, according to the results of laboratory tests in the presented case, two indexes related to the inflammatory state—lactic dehydrogenase and hydroxybutyrate dehydrogenase—were found to be elevated in the serum compared to the normal range (Table 2), which might partly support the hypothesis that chronic inflammation plays a part in linking AD to emotional dysregulation. However, indexes that are more directly linked to the general inflammatory state, such as cytokines and C-reactive protein, failed to show significant changes, suggesting that the reliability and applicability of such hypothesis still need further confirmation. Furthermore, since neither we obtained the CSF sample nor we conducted lymphocyte typing, the more accurate parameters of inflammation and neurodegeneration could not be tested, adding to the current limited understanding and persisting challenges.

Despite the current limitations, it can still be speculated that the depression- and mania-like performance in this case might be attributed to chronic AD progression, since the current examination and laboratory tests indicated no other possible neurological or psychiatric pathogenesis that could fully explain the functional changes in the brain. Meanwhile, the two-day strict regularity raises another dilemma. Usually, the accompanying emotional changes in AD do not display obvious regularity, while for affective disorders, such a short cycle of the emotional rhythm also does not meet the diagnostic criteria. Obviously, both are not suitable for this case. The “switch” mechanism of emotions has been linked to the photoperiodic and activating-dormancy rhythm (Raitiere, 2022), since the length of photoperiod is correlated with switches in neurotransmitter expression in specific brain regions, such as elevated expression of catecholaminergic expression during activated periods and raised expression of somatostatin and corticotrophin releasing factor during inhibited periods (Young and Dulcis, 2015).

Although the existing evidence could not fully explain the strict regularity of emotional states in this case due to the limitation of methodology and the necessity to track the neurotransmitter expression, it is supposed that the changes might be due to both AD pathology and the interactions between aut biorhythm and photoperiodicity.

Another issue is therapeutics. It is recommended that for short-term intervention by mood stabilizers, electroconvulsive therapy might be effective, while antipsychotic treatment needs to be weighted by its adverse effects (Elefante et al., 2023). In our case, a total daily dosage of 750 mg valproate and 200 mg quetiapine was initiated for stabilizing the mood, which was proven to be effective in the subsequent observation. Some previous studies have confirmed the neuroprotective effects of a low-to-moderate dose of lithium on AD (Hamstra et al., 2023), while there is also evidence to the contrary (Cheng et al., 2017; Devanand et al., 2022). In this case, lithium was not applied due to its influence on thyroid functions (McKnight et al., 2012; Kong et al., 2024), especially among female individuals (Bauer et al., 2014), since this patient was detected to have thyroid nodules of high risk. Besides, long-term treatment with valproate might be beneficial for AD in the early stage and have mania-like performance, since the pharmacological mechanism of valproate shows both mood-stabilizing and neuroprotective effects (Tariot et al., 2002). It has also been established that selective serotonin reuptake inhibitors can reduce A β plaque formation and promote hippocampal neurogenesis (Khoury and Grossberg, 2019), whereas the clinical effect of antidepressants remains controversial (Orgeta et al., 2017). Besides, previous studies have also shown that atypical antipsychotics could partly reduce manic symptoms in AD (Mühlbauer et al., 2021), and low-dose quetiapine (average of 37.5 mg per day) could improve neuropsychiatric symptoms (Miziak et al., 2021; Li et al., 2024). However, for those with AD at an advanced stage and significant deficits in brain functions, quetiapine at 100–500 mg per day might result in a greater cognitive decline (Ballard et al., 2005). Hence, we recommend a low-to-moderate dose of combined valproate and quetiapine for patients with early-stage AD and no personal history of other somatic diseases as adjunct treatment for significant emotional dysregulation.

This report describes a case of an elderly woman with AD accompanied by bipolar-like features. Shared

mechanisms between AD and mood abnormalities have been gradually elucidated during examinations, among which the dysregulation of neurotransmitters, neuroinflammation, and deposition of toxic proteins have been widely explored. For the treatment of this and similar conditions, we recommend combined therapies of anti-neurodegeneration agencies, neuroprotective drugs, mood stabilizers, and antipsychotics.

Data availability statement

The data that support the findings of this study are available from the corresponding author upon reasonable request.

Acknowledgments

We would like to thank the online tools provided by BioRender.com (<https://app.biorender.com>), which supported us in managing the separate figures as a summarized one.

Author contributions

Lingzhuo KONG and Yan YANG performed the examination of the patient, took the medical history, searched the literature, and wrote the manuscript; Weihua ZHOU examined the patient and guided the diagnostic and therapeutic process; Shaohua HU performed the examination of the patient, searched the literature, and conceptualized and edited the paper. All authors have read and approved the final manuscript, and therefore, have full access to all the data in the study and take responsibility for the integrity and security of the data.

Compliance with ethics guidelines

Lingzhuo KONG, Yan YANG, Weihua ZHOU, and Shaohua HU declare that they have no conflicts of interest.

All procedures followed were in accordance with the ethical standards of the responsible committee on human experimentation (institutional and national) and with the 1964 Declaration of Helsinki and its later amendments or comparable ethical standards. Informed consent was obtained from the patient for being included in the study. Additional informed consent was obtained from the patients for whom identifying information is included in this article. This study was approved by the Clinical Research Ethics Committee of The First Affiliated Hospital, Zhejiang University School of Medicine (Approval No. IIT20260289A). The patient of this report agreed to publish her data in a journal article.

Declaration on the use of generative AI tools

No generative AI tools were used in the preparation of this manuscript.

References

Anderson IM, Haddad PM, Scott J, 2012. Bipolar disorder. *BMJ*, 345:e8508.

- <https://doi.org/10.1136/bmj.e8508>
- Babulal GM, Roe CM, Stout SH, et al., 2020. Depression is associated with Tau and not amyloid positron emission tomography in cognitively normal adults. *J Alzheimers Dis*, 74(4):1045-1055.
<https://doi.org/10.3233/JAD-191078>
- Ballard C, Margallo-Lana M, Juszczak E, et al., 2005. Quetiapine and rivastigmine and cognitive decline in Alzheimer's disease: randomised double blind placebo controlled trial. *BMJ*, 330(7496):874.
<https://doi.org/10.1136/bmj.38369.459988.8F>
- Bauer M, Glenn T, Pilhatsch M, et al., 2014. Gender differences in thyroid system function: relevance to bipolar disorder and its treatment. *Bipolar Disord*, 16(1):58-71.
<https://doi.org/10.1111/bdi.12150>
- Berger T, Lee H, Young AH, et al., 2020. Adult hippocampal neurogenesis in major depressive disorder and Alzheimer's disease. *Trends Mol Med*, 26(9):803-818.
<https://doi.org/10.1016/j.molmed.2020.03.010>
- Boldrini M, Hen R, Underwood MD, et al., 2012. Hippocampal angiogenesis and progenitor cell proliferation are increased with antidepressant use in major depression. *Biol Psychiatry*, 72(7):562-571.
<https://doi.org/10.1016/j.biopsych.2012.04.024>
- Botto R, Callai N, Cermelli A, et al., 2022. Anxiety and depression in Alzheimer's disease: a systematic review of pathogenetic mechanisms and relation to cognitive decline. *Neurol Sci*, 43(7):4107-4124.
<https://doi.org/10.1007/s10072-022-06068-x>
- Bowden CL, 2005. Atypical antipsychotic augmentation of mood stabilizer therapy in bipolar disorder. *J Clin Psychiatry*, 66(Suppl 3):12-19.
- Carloni S, Rescigno M, 2023. The gut-brain vascular axis in neuroinflammation. *Semin Immunol*, 69:101802.
<https://doi.org/10.1016/j.smim.2023.101802>
- Cheng C, Zandi P, Stuart E, et al., 2017. Association between lithium use and risk of Alzheimer's disease. *J Clin Psychiatry*, 78(2):e139-e145.
<https://doi.org/10.4088/JCP.15m10304>
- Choi SH, Tanzi RE, 2019. Is Alzheimer's disease a neurogenesis disorder? *Cell Stem Cell*, 25(1):7-8.
<https://doi.org/10.1016/j.stem.2019.06.001>
- da Silva J, Gonçalves-Pereira M, Xavier M, et al., 2013. Affective disorders and risk of developing dementia: systematic review. *Br J Psychiatry*, 202(3):177-186.
<https://doi.org/10.1192/bjp.bp.111.101931>
- Deture MA, Dickson DW, 2019. The neuropathological diagnosis of Alzheimer's disease. *Mol Neurodegener*, 14:32.
<https://doi.org/10.1186/s13024-019-0333-5>
- Devanand DP, Crocco E, Forester BP, et al., 2022. Low dose lithium treatment of behavioral complications in Alzheimer's disease: Lit-AD randomized clinical trial. *Am J Geriatr Psychiatry*, 30(1):32-42.
<https://doi.org/10.1016/j.jagp.2021.04.014>
- Eicher TP, Mohajeri MH, 2022. Overlapping mechanisms of action of brain-active bacteria and bacterial metabolites in the pathogenesis of common brain diseases. *Nutrients*, 14(13):2661.
<https://doi.org/10.3390/nu14132661>
- Elefante C, Brancati GE, Torrigiani S, et al., 2023. Bipolar disorder and manic-like symptoms in Alzheimer's, vascular and frontotemporal dementia: a systematic review. *Curr Neuropharmacol*, 21(12):2516-2542.
<https://doi.org/10.2174/1570159X20666220706110157>
- Ferreira D, Nordberg A, Westman E, 2020. Biological subtypes of Alzheimer disease: a systematic review and meta-analysis. *Neurology*, 94(10):436-448.
<https://doi.org/10.1212/WNL.0000000000009058>
- Förstl H, Kurz A, 1999. Clinical features of Alzheimer's disease. *Eur Arch Psychiatry Clin Neurosci*, 249(6):288-290.
<https://doi.org/10.1007/s004060050101>
- Generoso JS, Giridharan VV, Lee J, et al., 2021. The role of the microbiota-gut-brain axis in neuropsychiatric disorders. *Braz J Psychiatry*, 43(3):293-305.
<https://doi.org/10.1590/1516-4446-2020-0987>
- Goldman JS, van Deerlin VM, 2018. Alzheimer's disease and frontotemporal dementia: the current state of genetics and genetic testing since the advent of next-generation sequencing. *Mol Diagn Ther*, 22(5):505-513.
<https://doi.org/10.1007/s40291-018-0347-7>
- Hamstra SI, Roy BD, Tiidus P, et al., 2023. Beyond its psychiatric use: the benefits of low-dose lithium supplementation. *Curr Neuropharmacol*, 21(4):891-910.
<https://doi.org/10.2174/1570159X20666220302151224>
- Harrington KD, Lim YY, Gould E, et al., 2015. Amyloid-beta and depression in healthy older adults: a systematic review. *Aust N Z J Psychiatry*, 49(1):36-46.
<https://doi.org/10.1177/0004867414557161>
- Huang YS, Coupland NJ, Lebel RM, et al., 2013. Structural changes in hippocampal subfields in major depressive disorder: a high-field magnetic resonance imaging study. *Biol Psychiatry*, 74(1):62-68.
<https://doi.org/10.1016/j.biopsych.2013.01.005>
- Huang YY, Gan YH, Yang L, et al., 2024. Depression in Alzheimer's disease: epidemiology, mechanisms, and treatment. *Biol Psychiatry*, 95(11):992-1005.
<https://doi.org/10.1016/j.biopsych.2023.10.008>
- Jin KL, Peel AL, Mao XO, et al., 2004. Increased hippocampal neurogenesis in Alzheimer's disease. *Proc Natl Acad Sci USA*, 101(1):343-347.
<https://doi.org/10.1073/pnas.2634794100>
- Khoury R, Grossberg GT, 2019. Impact of antidepressant use on the trajectory of Alzheimer's disease: evidence, mechanisms, and therapeutic implications. *CNS Drugs*, 33(1):17-29.
<https://doi.org/10.1007/s40263-018-0590-9>
- Knorr U, Simonsen AH, Jensen CS, et al., 2022. Alzheimer's disease related biomarkers in bipolar disorder—a longitudinal one-year case-control study. *J Affect Disord*, 297:623-633.

- <https://doi.org/10.1016/j.jad.2021.10.074>
- Kong LZ, Shen YT, Hu SH, et al., 2024. The impact of quetiapine monotherapy or in combination with lithium on the thyroid function in patients with bipolar depression: a retrospective study. *CNS Neurosci Ther*, 30(2):e14342. <https://doi.org/10.1111/cns.14342>
- Leocadi M, Canu E, Paldino A, et al., 2023. Awareness impairment in Alzheimer's disease and frontotemporal dementia: a systematic MRI review. *J Neurol*, 270(4):1880-1907. <https://doi.org/10.1007/s00415-022-11518-9>
- Li KY, Lin BT, Hsu ST, et al., 2024. Quetiapine oral solution in Alzheimer's disease: efficacy and dosage insights from a real-world retrospective study. *J Alzheimers Dis*, 97(2):805-811. <https://doi.org/10.3233/JAD-231007>
- McKnight RF, Adida M, Budge K, et al., 2012. Lithium toxicity profile: a systematic review and meta-analysis. *Lancet*, 379(9817):721-728. [https://doi.org/10.1016/S0140-6736\(11\)61516-X](https://doi.org/10.1016/S0140-6736(11)61516-X)
- Miziak B, Błaszczyc B, Czuczwar SJ, 2021. Some candidate drugs for pharmacotherapy of Alzheimer's disease. *Pharmaceuticals (Basel)*, 14(5):458. <https://doi.org/10.3390/ph14050458>
- Mühlbauer V, Möhler R, Dichter MN, et al., 2021. Antipsychotics for agitation and psychosis in people with Alzheimer's disease and vascular dementia. *Cochrane Database Syst Rev*, 12(12):CD013304. <https://doi.org/10.1002/14651858.CD013304.pub2>
- Musa G, Slachevsky A, Muñoz-Neira C, et al., 2020. Alzheimer's disease or behavioral variant frontotemporal dementia? Review of key points toward an accurate clinical and neuropsychological diagnosis. *J Alzheimers Dis*, 73(3):833-848. <https://doi.org/10.3233/JAD-190924>
- Neff RA, Wang MH, Vatansever S, et al., 2021. Molecular subtyping of Alzheimer's disease using RNA sequencing data reveals novel mechanisms and targets. *Sci Adv*, 7(2):eabb5398. <https://doi.org/10.1126/sciadv.abb5398>
- O'Brien J, 2005. Dementia associated with psychiatric disorders. *Int Psychogeriatr*, 17(Suppl 1):S207-S221. <https://doi.org/10.1017/s1041610205002036>
- Orgeta V, Tabet N, Nilforooshan R, et al., 2017. Efficacy of antidepressants for depression in Alzheimer's disease: systematic review and meta-analysis. *J Alzheimers Dis*, 58(3):725-733. <https://doi.org/10.3233/JAD-161247>
- Raitiere MN, 2022. The elusive "switch process" in bipolar disorder and photoperiodism: a hypothesis centering on NADPH oxidase-generated reactive oxygen species within the bed nucleus of the stria terminalis. *Front Psychiatry*, 13:847584. <https://doi.org/10.3389/fpsy.2022.847584>
- Robbins TW, Elliott R, Sahakian BJ, 1996. Neuropsychology—dementia and affective disorders. *Br Med Bull*, 52(3):627-643. <https://doi.org/10.1093/oxfordjournals.bmb.a011572>
- Rostagno AA, 2022. Pathogenesis of Alzheimer's disease. *Int J Mol Sci*, 24(1):107. <https://doi.org/10.3390/ijms24010107>
- Russo R, Cristiano C, Avagliano C, et al., 2018. Gut-brain axis: role of lipids in the regulation of inflammation, pain and CNS diseases. *Curr Med Chem*, 25(32):3930-3952. <https://doi.org/10.2174/0929867324666170216113756>
- Sachdev PS, Blacker D, Blazer DG, et al., 2014. Classifying neurocognitive disorders: the DSM-5 approach. *Nat Rev Neurol*, 10(11):634-642. <https://doi.org/10.1038/nrneurol.2014.181>
- Scheltens P, Blennow K, Breteler MMB, et al., 2016. Alzheimer's disease. *Lancet*, 388(10043):505-517. [https://doi.org/10.1016/S0140-6736\(15\)01124-1](https://doi.org/10.1016/S0140-6736(15)01124-1)
- Scheltens P, de Strooper B, Kivipelto M, et al., 2021. Alzheimer's disease. *Lancet*, 397(10284):1577-1590. [https://doi.org/10.1016/S0140-6736\(20\)32205-4](https://doi.org/10.1016/S0140-6736(20)32205-4)
- Shi YJ, Wei B, Li LJ, et al., 2022. Th17 cells and inflammation in neurological disorders: possible mechanisms of action. *Front Immunol*, 13:932152. <https://doi.org/10.3389/fimmu.2022.932152>
- Solé B, Jiménez E, Torrent C, et al., 2017. Cognitive impairment in bipolar disorder: treatment and prevention strategies. *Int J Neuropsychopharmacol*, 20(8):670-680. <https://doi.org/10.1093/ijnp/pyx032>
- Tae WS, Kim SS, Lee KU, et al., 2011. Hippocampal shape deformation in female patients with unremitting major depressive disorder. *AJNR Am J Neuroradiol*, 32(4):671-676. <https://doi.org/10.3174/ajnr.A2367>
- Tariot PN, Loy R, Ryan JM, et al., 2002. Mood stabilizers in Alzheimer's disease: symptomatic and neuroprotective rationales. *Adv Drug Deliv Rev*, 54(12):1567-1577. [https://doi.org/10.1016/s0169-409x\(02\)00153-9](https://doi.org/10.1016/s0169-409x(02)00153-9)
- Toda T, Parylak SL, Linker SB, et al., 2019. The role of adult hippocampal neurogenesis in brain health and disease. *Mol Psychiatry*, 24(1):67-87. <https://doi.org/10.1038/s41380-018-0036-2>
- Vogelgsang J, Heßmann P, Wolff-Menzler C, et al., 2020. Prevalence of affective disorders and dementia in inflammatory polyarthropathies. *Eur Arch Psychiatry Clin Neurosci*, 270(2):247-252. <https://doi.org/10.1007/s00406-019-01015-y>
- West MJ, Coleman PD, Flood DG, et al., 1994. Differences in the pattern of hippocampal neuronal loss in normal ageing and Alzheimer's disease. *Lancet*, 344(8925):769-772. [https://doi.org/10.1016/s0140-6736\(94\)92338-8](https://doi.org/10.1016/s0140-6736(94)92338-8)
- Xu JY, Li QJ, Qin W, et al., 2018. Neurobiological substrates underlying the effect of genomic risk for depression on the conversion of amnesic mild cognitive impairment. *Brain*, 141(12):3457-3471.

<https://doi.org/10.1093/brain/awy277>

Xu W, Feng W, Shen XN, et al., 2021. Amyloid pathologies modulate the associations of minimal depressive symptoms with cognitive impairments in older adults without dementia. *Biol Psychiatry*, 89(8):766-775.

<https://doi.org/10.1016/j.biopsych.2020.07.004>

Young JW, Dulcis D, 2015. Investigating the mechanism(s)

underlying switching between states in bipolar disorder. *Eur J Pharmacol*, 759:151-162.

<https://doi.org/10.1016/j.ejphar.2015.03.019>

Zhou J, Seeley WW, 2014. Network dysfunction in Alzheimer's disease and frontotemporal dementia: implications for psychiatry. *Biol Psychiatry*, 75(7):565-573.

<https://doi.org/10.1016/j.biopsych.2014.01.020>